

 2  1  2



Woodmill Court, *Ascot*

OSBORNE HEATH

A recently refurbished two double bedroom, two bathroom ground floor apartment with allocated parking and no onward chain.

This ground floor apartment has a living room with dining space, modern kitchen with a breakfast bar, principal bedroom with an en suite, further double bedroom and a bathroom.

The development has allocated parking, visitor parking and communal gardens.

Woodmill Court is a small private development close to Ascot Racecourse. Other nearby points of interest include Coworth Park, Guards Polo Club, Legoland, Sunningdale Golf Club, Wentworth Club and Windsor Great Park. The nearest train station is Ascot where services run to London, Reading and Guildford. By road Ascot is convenient for the M3, M4, M25 and Heathrow Airport.

EPC rating D. Council Tax band C. Lease 102 years remaining. Ground rent £195pa. Service charge £1,700pa

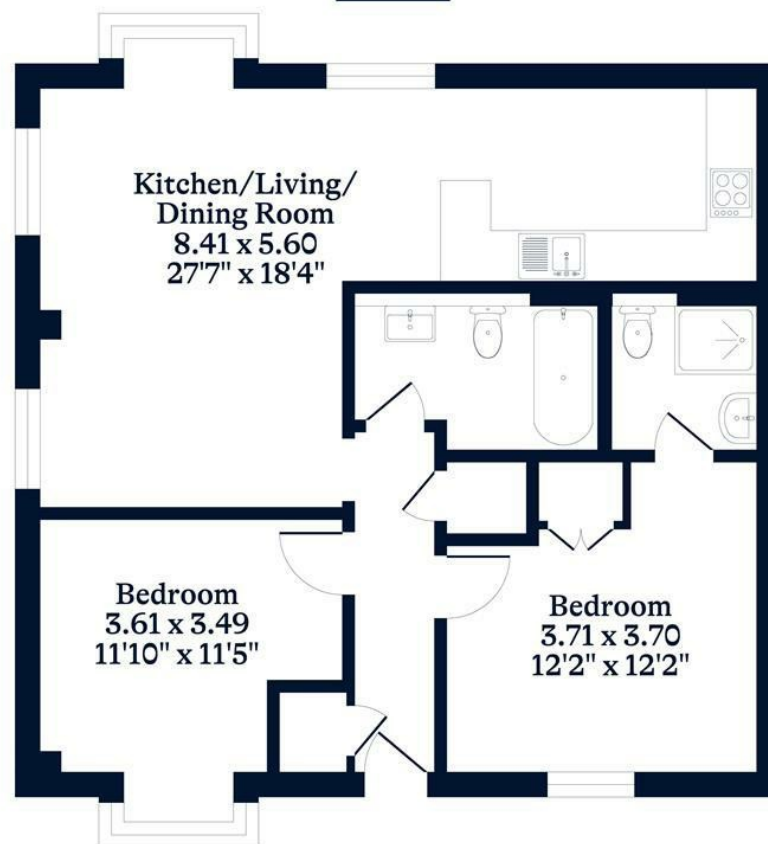




APPROXIMATE FLOOR AREA
Apartment - 71.45 sq m - 769 sq ft
(Gross Internal Area)



NOT TO SCALE
This plan is for illustration purposes only



Ground Floor

This plan is for layout guidance only. Not drawn to scale unless stated. Windows and door openings are approximate. Whilst every care is taken in the preparation of this plan, please check all dimensions, shapes and compass bearings before making any decisions reliant upon them.

OSBORNEHEATH.CO.UK