

 4  2  1



# Furzebank, *Sunninghill*

OSBORNE HEATH



# A four bedroom family home close to the centre of Sunninghill village.

On the ground floor there is a kitchen, dining room with study area, living room with doors out to the garden, and a downstairs WC.

On the first floor is the principal bedroom with built-in wardrobes, three further bedrooms and a family bathroom.

Outside the property has a front garden and a south east facing rear garden.

Furzebank is off Upper Village Road in Sunninghill village. Nearby schools include Charters, St Francis, St Michael's and The Marist. The village has a number of local high street businesses and great restaurants and pubs. Nearby places of interest include Ascot Racecourse, Coworth Park, Guards Polo Club, Legoland, The Lexicon, Wentworth Club, Windsor Castle and Windsor Great Park. The nearest train station is Ascot where services run to London, Reading and Guildford. By road Sunninghill is also convenient for the M3, M4, M25 and Heathrow Airport.

EPC rating D. Council Tax band E.





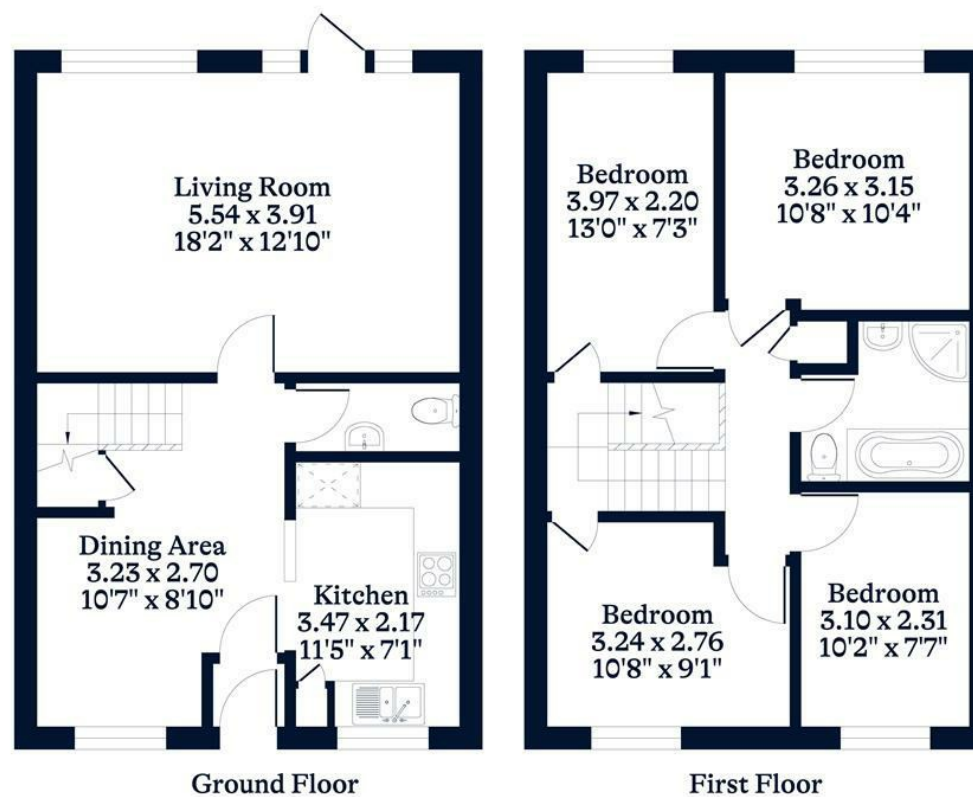




**APPROXIMATE FLOOR AREA**  
House - 94.20 sq m - 1015 sq ft  
(Gross Internal Area)



**NOT TO SCALE**  
This plan is for illustration purposes only



This plan is for layout guidance only. Not drawn to scale unless stated. Windows and door openings are approximate. Whilst every care is taken in the preparation of this plan, please check all dimensions, shapes and compass bearings before making any decisions reliant upon them.

[OSBORNEHEATH.CO.UK](http://OSBORNEHEATH.CO.UK)