

 3  3  2



# Coworth Close, *Sunningdale*

OSBORNE HEATH



# An extended three double bedroom, two bathroom family home with a large driveway, garden backing onto Coworth Park and no onward chain.

On the ground floor is a living room, kitchen leading through to a family room and dining room with doors leading out to the garden.

The first floor has the principal bedroom with a vaulted ceiling and an en suite, two further double bedrooms and a family bathroom.

Outside there is a driveway with side access to the large garden with patio, lawn and views of Coworth Park.

Nearby schools include Charters, Holy Trinity, The Marist and St Francis. Local places of interest include Ascot Racecourse, Coworth Park, Guards Polo Club, Legoland, The Lexicon, Sunningdale Golf Club, Virginia Water Lake, Wentworth Club and Windsor Great Park. The station in Sunningdale runs trains to London Waterloo and Reading. Sunningdale is also convenient for the M3, M4, M25 and Heathrow Airport.

EPC rating D. Council Tax band D.





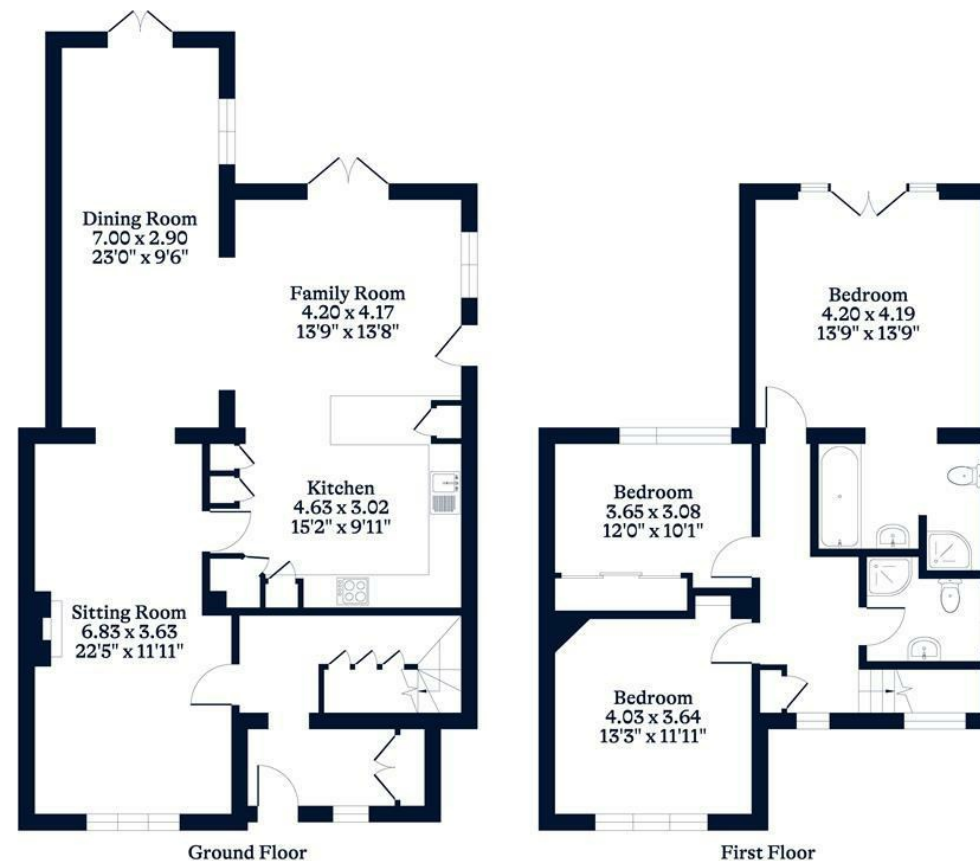




**APPROXIMATE FLOOR AREA**  
House - 158.60 sq m - 1707 sq ft  
(Gross Internal Area)



**NOT TO SCALE**  
This plan is for illustration purposes only



This plan is for layout guidance only. Not drawn to scale unless stated. Windows and door openings are approximate. Whilst every care is taken in the preparation of this plan, please check all dimensions, shapes and compass bearings before making any decisions reliant upon them.

[OSBORNEHEATH.CO.UK](http://OSBORNEHEATH.CO.UK)