

 2  1  1



# Woodmill Court, *Ascot*

OSBORNE HEATH

## A two bedroom ground floor apartment with allocated parking, patio and within walking distance of Ascot high street and station.

This ground floor apartment has a living room with dining space, modern kitchen, two bedrooms with built-in wardrobes and a modern bathroom.

The development has a secure entry system, residents parking and communal gardens, and this apartment has it's own private patio.

Woodmill Court is a small private development close to Ascot Racecourse. Other nearby points of interest include Coworth Park, Guards Polo Club, Legoland, Sunningdale Golf Club, Wentworth Club and Windsor Great Park. The nearest train station is Ascot where services run to London Waterloo, Reading and Guildford. By road Ascot is convenient for the M3, M4, M25 and Heathrow Airport.

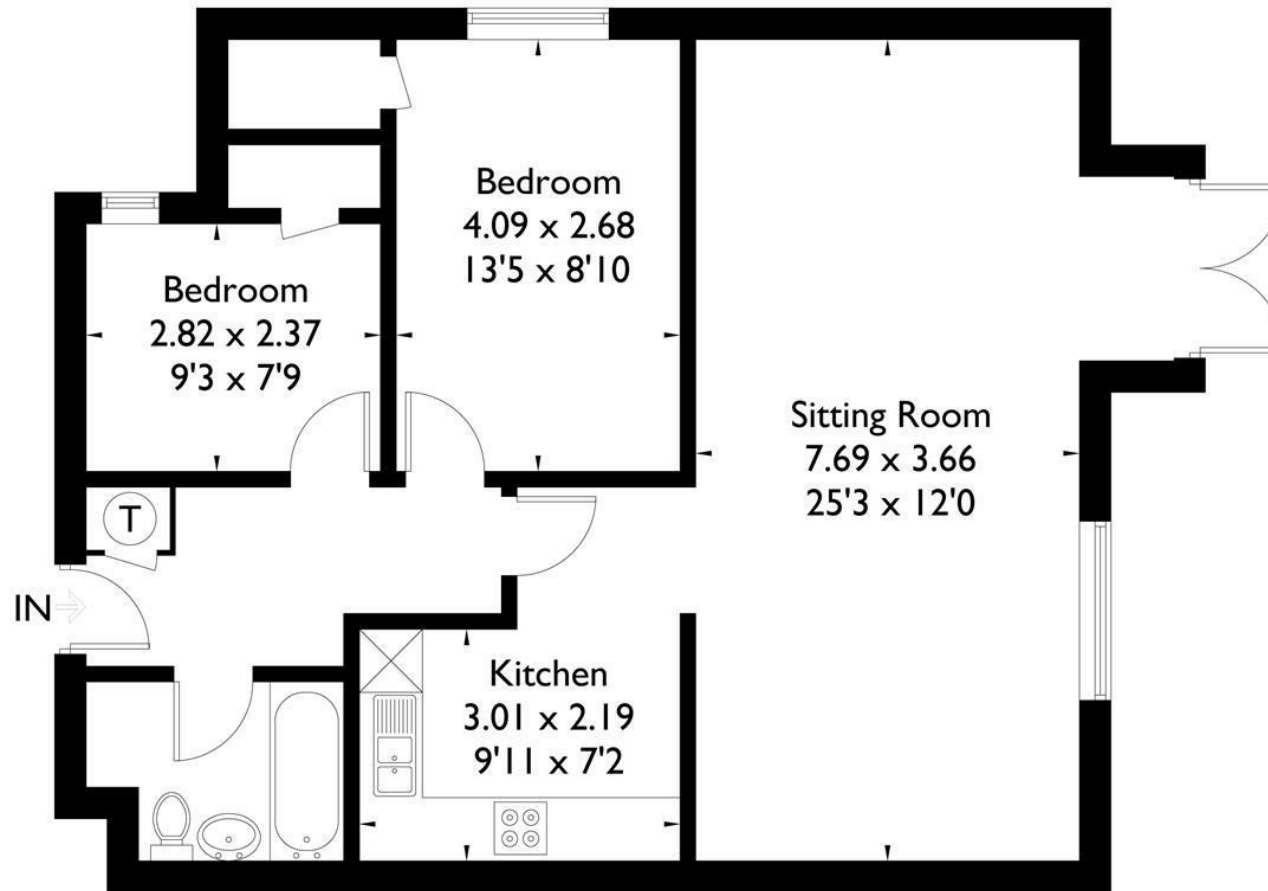
EPC rating D. Council Tax band C. Deposit £1,846. Holding Deposit £369. Lease Length 6-24 months.





# Woodmill Court, London Road, Ascot, SL5

Approximate Gross Internal Area = 72.9 sq m / 785 sq ft



## Ground Floor

FLOORPLANZ © 2018 0203 9056099 Ref: 203533

This plan is for layout guidance only. Drawn in accordance with RICS guidelines. Not drawn to scale unless stated. Windows & door openings are approximate. Whilst every care is taken in the preparation of this plan, please check all dimensions, shapes & compass bearings before making any decisions reliant upon them.