

 4  3  2



Hawkins Close, *Chavey Down*

OSBORNE HEATH

A modern four bedroom detached family home with a driveway and double garage nestled down a quiet cul-de-sac.

On the ground floor is a lounge, dining room, study, open plan kitchen and diner, utility room and wc.

The first floor is the principal bedroom with a modern ensuite, three further bedrooms and a modern family bathroom.

Outside is a driveway, double garage and side access to the lawned garden.

Hawkins Close is a small private cul-de-sac. Nearby places of interest include Ascot Racecourse, The Berkshire Golf Club, Coworth Park, Guards Polo Club, Sunningdale Golf Club, Swinley Forest Golf Club, Wentworth Club and Windsor Great Park. Local Private schools include Heathfield, Lambrook, LVS, Papplewick, St George's, St Mary's, Sunningdale and The Marist. Martins Heron train station (10 minute walk) runs services to London, Reading and Guildford. Ascot is also convenient for the M3, M4, M25 and Heathrow Airport.

EPC rating TBC. Council Tax Band G

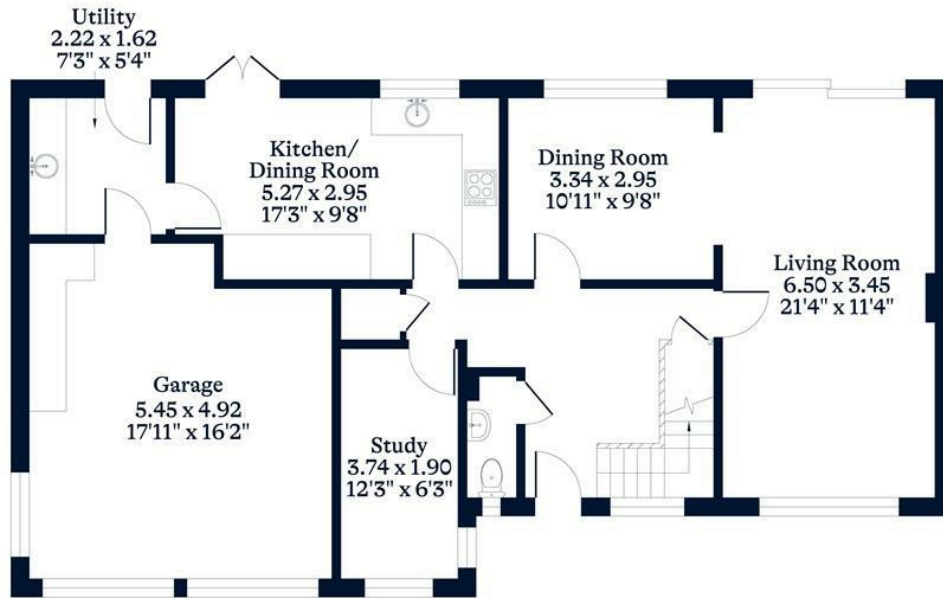




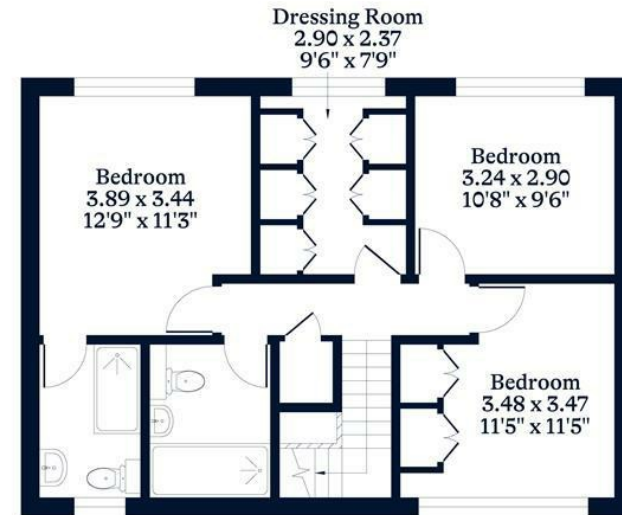
APPROXIMATE FLOOR AREA
House - 166.00 sq m - 1787 sq ft
(Gross Internal Area)



NOT TO SCALE
This plan is for illustration purposes only



Ground Floor



First Floor

This plan is for layout guidance only. Not drawn to scale unless stated. Windows and door openings are approximate. Whilst every care is taken in the preparation of this plan, please check all dimensions, shapes and compass bearings before making any decisions reliant upon them.

OSBORNEHEATH.CO.UK