

3 1 2



Chobham Road, *Sunningdale*

OSBORNE HEATH

A three bedroom, two bathroom house with a driveway and garage, south west facing garden located within walking distance to Sunningdale high street and train station. No onward chain.

The ground floor has a living and dining room, kitchen and a downstairs WC.

On the first floor is the main bedroom with en suite and built-in wardrobes, two further bedrooms, one of which is used as a study, and a family bathroom.

Outside the property has a private driveway and garden with a garage to the rear.

Chobham Road in the centre of Sunningdale. There are a number of popular restaurants and cafes less than 160 yards away. Waitrose and Sunningdale Train Station are also a short stroll away, offering services to London Waterloo and Reading. Nearby places of interest include Ascot Racecourse, Guards Polo Club, Sunningdale Golf Club, Wentworth Club and Windsor Great Park. Sunningdale is also convenient for the M3, M4, M25 and Heathrow Airport.

EPC rating D. Council Tax band F



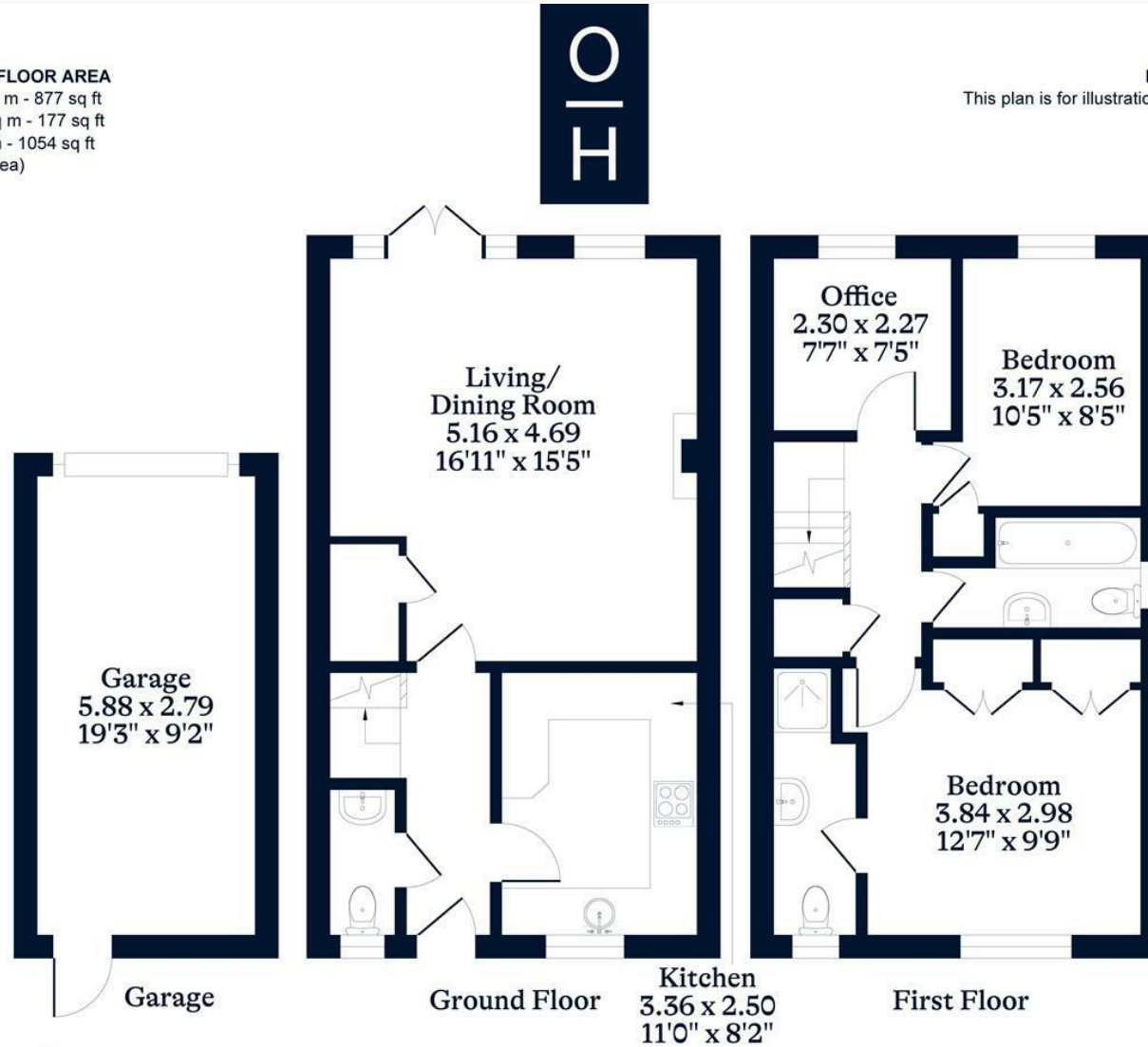


APPROXIMATE FLOOR AREA

House - 81.49 sq m - 877 sq ft
Garage - 16.40 sq m - 177 sq ft
Total - 97.89 sq m - 1054 sq ft
(Gross Internal Area)

NOT TO SCALE

This plan is for illustration purposes only



This plan is for layout guidance only. Not drawn to scale unless stated. Windows and door openings are approximate. Whilst every care is taken in the preparation of this plan, please check all dimensions, shapes and compass bearings before making any decisions reliant upon them.

OSBORNEHEATH.CO.UK