

🛏️ 2 🛋️ 1 🛁 2



Grand Regency Heights, Ascot

OSBORNE HEATH

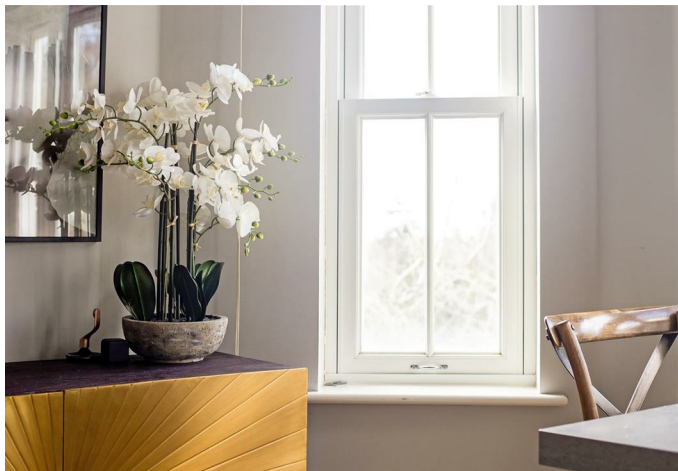
A modern two double bedroom, two bathroom apartment with views overlooking gardens.

This modern third floor apartment has a living room with dining area, separate kitchen, principal bedroom with bespoke fitted wardrobes and an en suite shower room, second double bedroom with bespoke fitted wardrobes, and a bathroom.

This apartment has underground parking and two vehicles and access to communal gardens with a bike store and a lift.

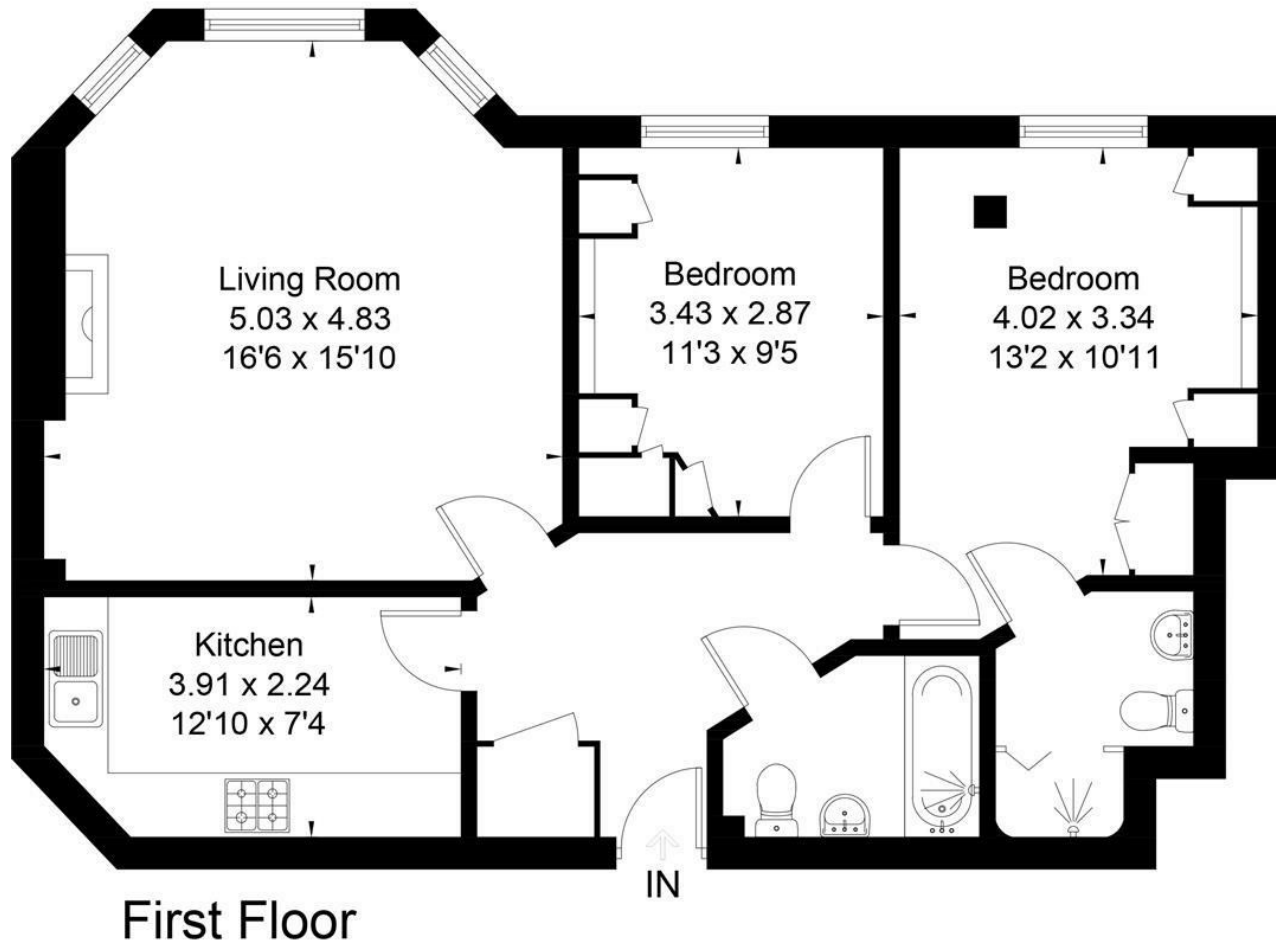
Grand Regency Heights is off Burleigh Road. The development is opposite Ascot Racecourse. Other nearby places of interest include The Berkshire Golf Club, Coworth Park, Guards Polo Club, The Lexicon, Sunningdale Golf Club, Wentworth Club, Windsor Castle and Windsor Great Park. The nearest train station is Ascot where trains run to London, Reading and Guildford. Ascot is also convenient for the M3, M4, M25 and Heathrow Airport.

EPC rating C. Council Tax band F. Lease 103 years remaining. Service Charge £2,250pa. Ground Rent £250pa.





Approximate Area = 72.8 sq m / 784 sq ft



Surveyed and drawn in accordance with the International Property Measurement Standards (IPMS 2: Residential)
fourwalls-group.com 294187