

 5  3  3



Binfield Park, *Binfield*

OSBORNE HEATH

A Georgian Grade II listed country mansion that has been converted into a five bedroom home with gated driveway.

This unique home has character features such as high ceilings, double aspect windows in each room allow for plenty of natural light and views of the gardens.

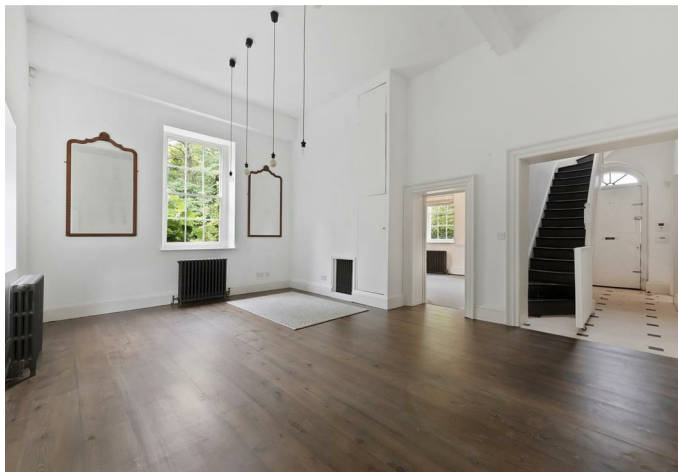
Downstairs there is a grand drawing room, dining room, kitchen, study, and a downstairs WC.

Upstairs there is a principal bedroom with five-piece en suite, second double bedroom with fitted wardrobes, two bathrooms, and three further bedrooms. This property has two staircases, and the rear staircase includes built-in storage and a bookcase, creating a cozy reading nook.

This beautiful home is situated within a private estate that is gated and has a gravel driveway and a large garden with lawn and mature trees.

This private estate is set in Binfield Park, close to the village of Binfield. Nearby schools include, Kings Academy Binfield, Kings Academy Oakwood, Binfield Church of England, Lambrook, LVS, The Marist, Papplewick, St Joseph's, Ranelagh. The nearest train stations are Bracknell and Martins Heron where services run to London and Reading. By road Binfield Park is convenient for the M3, M4, M25 and Heathrow Airport. Nearby points of interest include Swinley Forest, Coworth Park, Legoland, The Lexicon, Wentworth Club, Windsor Castle and Windsor Great Park.

EPC rating E. Council Tax band G. Lease Lench 6-24 months. Deposit £4,615. Holding Deposit £923

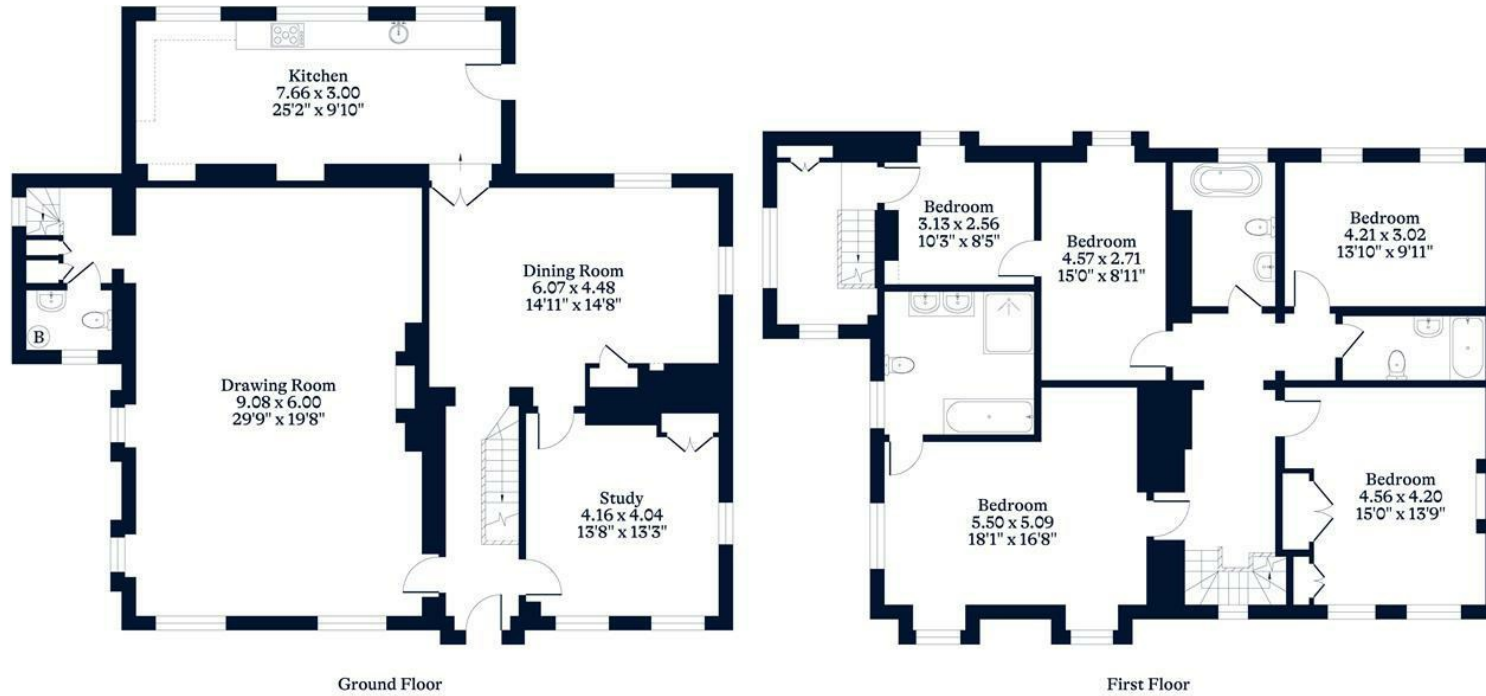




APPROXIMATE FLOOR AREA
House - 274.39 sq m - 2954 sq ft
(Gross Internal Area)



NOT TO SCALE
This plan is for illustration purposes only



This plan is for layout guidance only. Not drawn to scale unless stated. Windows and door openings are approximate. Whilst every care is taken in the preparation of this plan, please check all dimensions, shapes and compass bearings before making any decisions reliant upon them.

OSBORNEHEATH.CO.UK