

 2  1  2



Acer Court, Ascot

OSBORNE HEATH

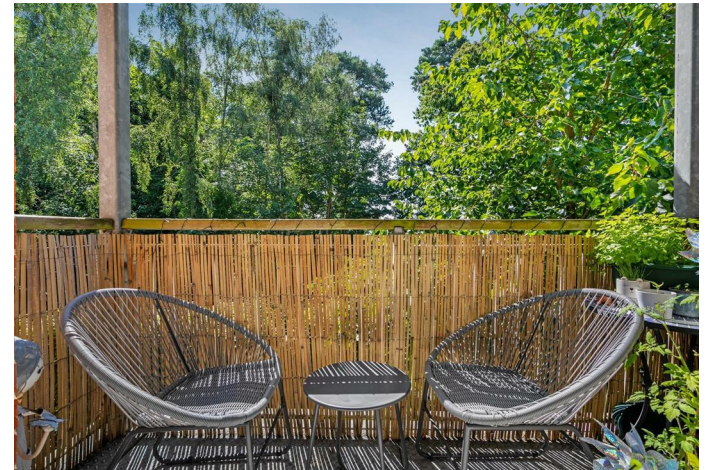
A gated two bedroom, two bathroom apartment with allocated parking, a balcony and within walking distance to Ascot high street and station.

This apartment has a principal bedroom with en suite and built-in wardrobes, second bedroom, bathroom and an open plan kitchen, living and dining room with doors out to a south facing balcony.

Acer Court is in Brook Avenue, a cul-de-sac in a gated development next to Ascot High Street and Racecourse. Other nearby places of interest include The Berkshire Golf Club, Guards Polo Club, The Lexicon, Sunningdale Golf Club, Swinley Forest, Wentworth Club, Windsor Castle and Windsor Great Park. The nearest train station is Ascot where trains run to London, Reading and Guildford. Ascot is also convenient for the M3, M4, M25 and Heathrow Airport.

EPC rating B. Council Tax band D. Service Charge £1,300pa.
Ground Rent £250pa. 984 year Lease.

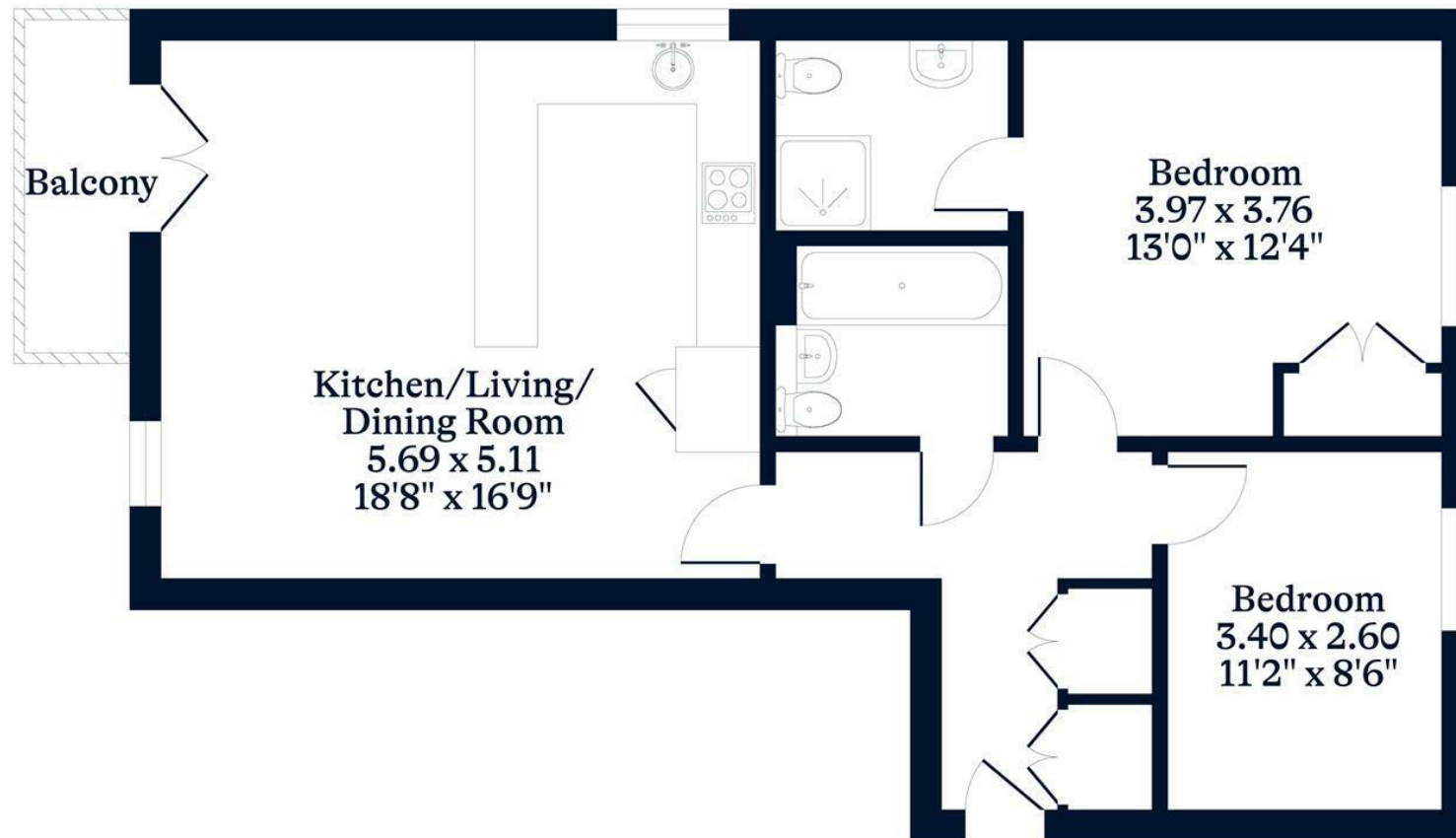




APPROXIMATE FLOOR AREA
House - 72.61 sq m - 782 sq ft
(Gross Internal Area)



NOT TO SCALE
This plan is for illustration purposes only



This plan is for layout guidance only. Not drawn to scale unless stated. Windows and door openings are approximate. Whilst every care is taken in the preparation of this plan, please check all dimensions, shapes and compass bearings before making any decisions reliant upon them.

OSBORNEHEATH.CO.UK