

2 2 2



Prince Andrew Way, Ascot

OSBORNE HEATH

A two bedroom, two bathroom home set in a cul-de-sac with no onward chain.

On the ground floor is the living room, kitchen with diner area and doors leading out to the garden.

The first floor has the principal bedroom with built-in wardrobes and an en suite, a further bedroom and a bathroom.

Outside the property has allocated parking, a garden with a large shed and within walking distance are the local parks.

Prince Andrew way is a small cul-de-sac with an entrance into local woodland that leads to a small park. The road is also close to a nearby pond on Sutherland Chase. The nearest train station is Ascot where services run to London Waterloo, Reading and Guildford. By road Ascot is convenient for the M3, M4, M25 and Heathrow Airport. Local places of interest include Ascot Racecourse, Coworth Park, Guards Polo Club, Legoland, The Lexicon, Sunningdale Golf Club, Wentworth Club and Windsor Great Park. Nearby schools include Ascot Heath, Charters, Cheapside, LVS, Papplewick and St. Francis.

EPC rating C. Council Tax band D.

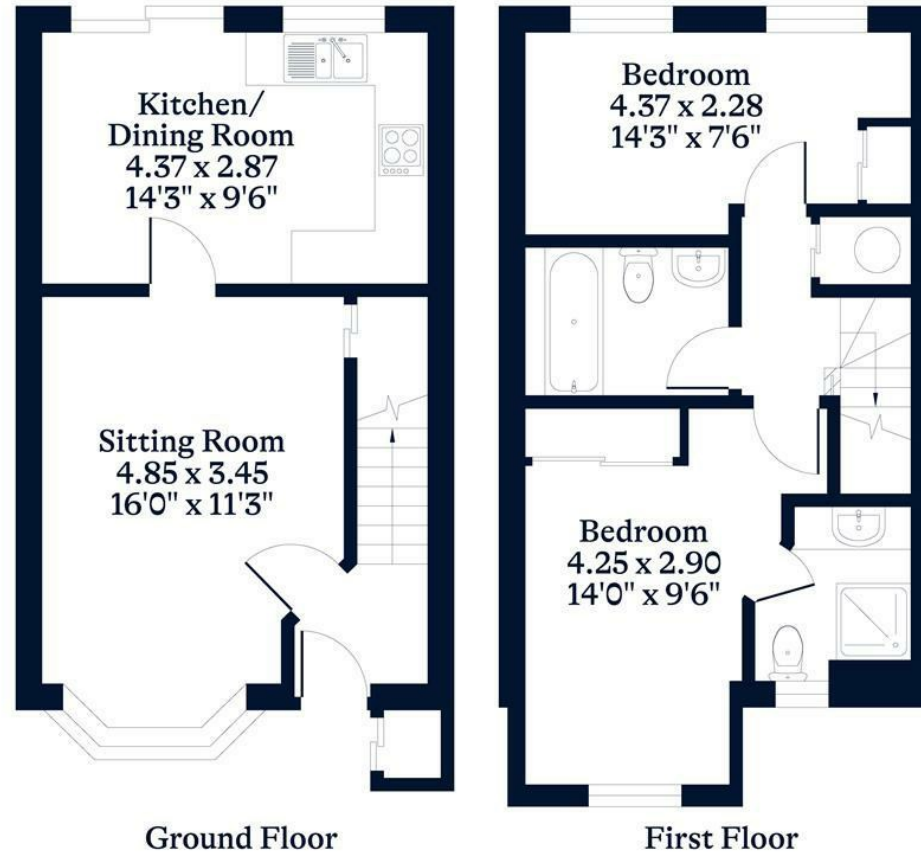




APPROXIMATE FLOOR AREA
House - 68.00 sq m - 732 sq ft
(Gross Internal Area)



NOT TO SCALE
This plan is for illustration purposes only



This plan is for layout guidance only. Not drawn to scale unless stated. Windows and door openings are approximate. Whilst every care is taken in the preparation of this plan, please check all dimensions, shapes and compass bearings before making any decisions reliant upon them.

OSBORNEHEATH.CO.UK