

🛏️ 2 🛋️ 1 🛁 2

O  
|  
H



# Eastcote Place, Ascot

OSBORNE HEATH



## A two double bedroom, two bathroom top floor apartment with allocated parking.

This two bedroom top floor apartment has a living and dining room, integrated kitchen, principal bedroom with built-in wardrobes and en suite shower room, second double bedroom and a bathroom.

Outside the apartment has a secured entry system and allocated parking.

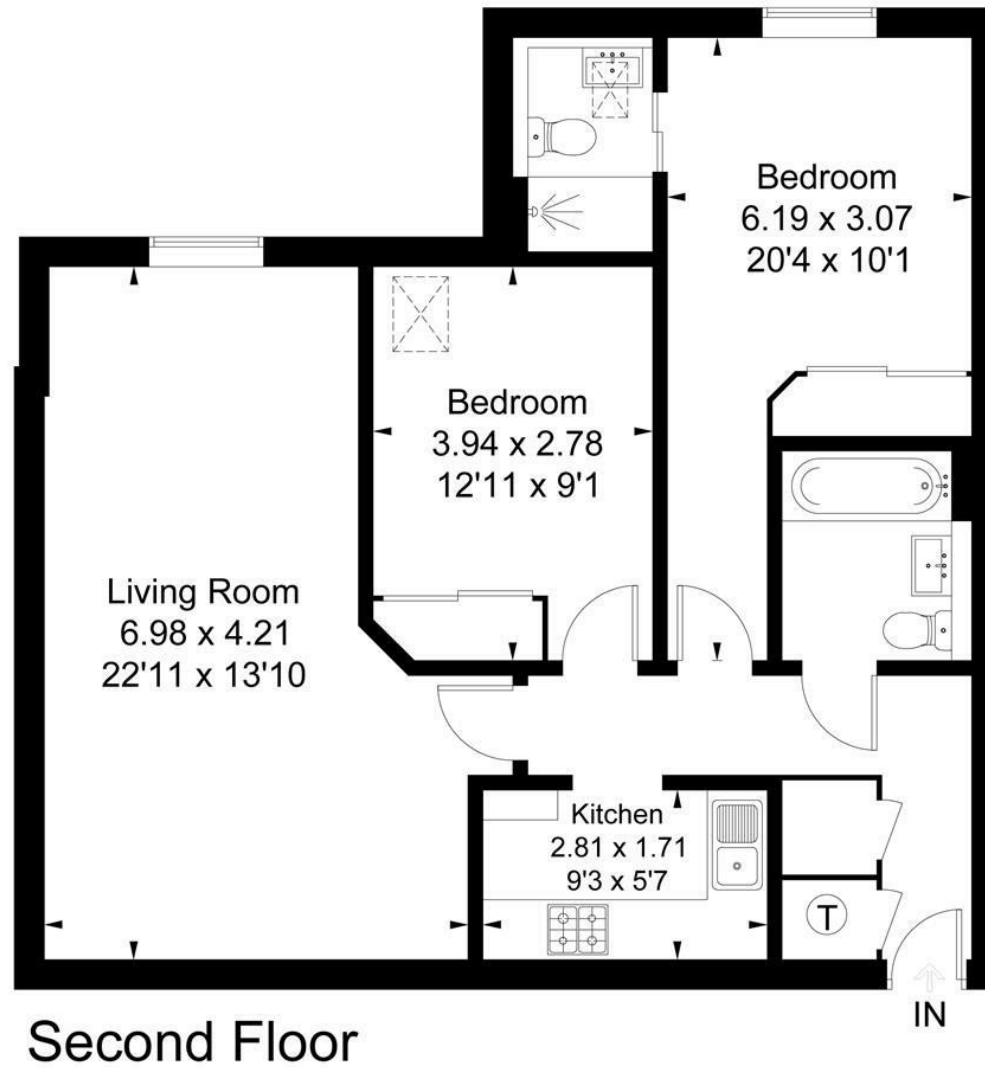
Eastcote Place was built in 2005 and is located on Fernbank Road. The nearest train station is Ascot where services run to London, Reading and Guildford. By road Ascot is convenient for the M3, M4, M25 and Heathrow Airport. Nearby places of interest include Ascot Racecourse, The Berkshire Golf Club, Coworth Park, Guards Polo Club, Legoland, The Lexicon, Swinley Forest, Wentworth Club, Windsor Castle and Windsor Great Park.

EPC rating C. Council Tax band C. Extended lease 123 years remaining. Service Charge £1,600 pa. Ground Rent £400pa





Approximate Area = 75.6 sq m / 814 sq ft  
Including Limited Use Area (0.4 sq m / 4 sq ft)



Surveyed and drawn in accordance with the International Property Measurement Standards (IPMS 2: Residential)  
fourwalls-group.com 302056