

🛏️ 2 🪑 1 🛁 2



London Road, *Ascot*

OSBORNE HEATH

A two bedroom, two bathroom apartment set in a gated development walking distance to Ascot High Street.

This two double bedroom apartment has two bathrooms, lounge with dining space and a kitchen.

Outside the apartment has allocated parking and access to the communal gardens.

Vernon Court is close to Ascot Racecourse. Other nearby points of interest include Guards Polo Club, Legoland, The Lexicon, Sunningdale Golf Club, Swinley Forest, Wentworth Club and Windsor Great Park. The nearest train station is Ascot which runs to London, Reading and Guildford. By road Ascot is convenient for the M3, M4, M25 and Heathrow Airport.

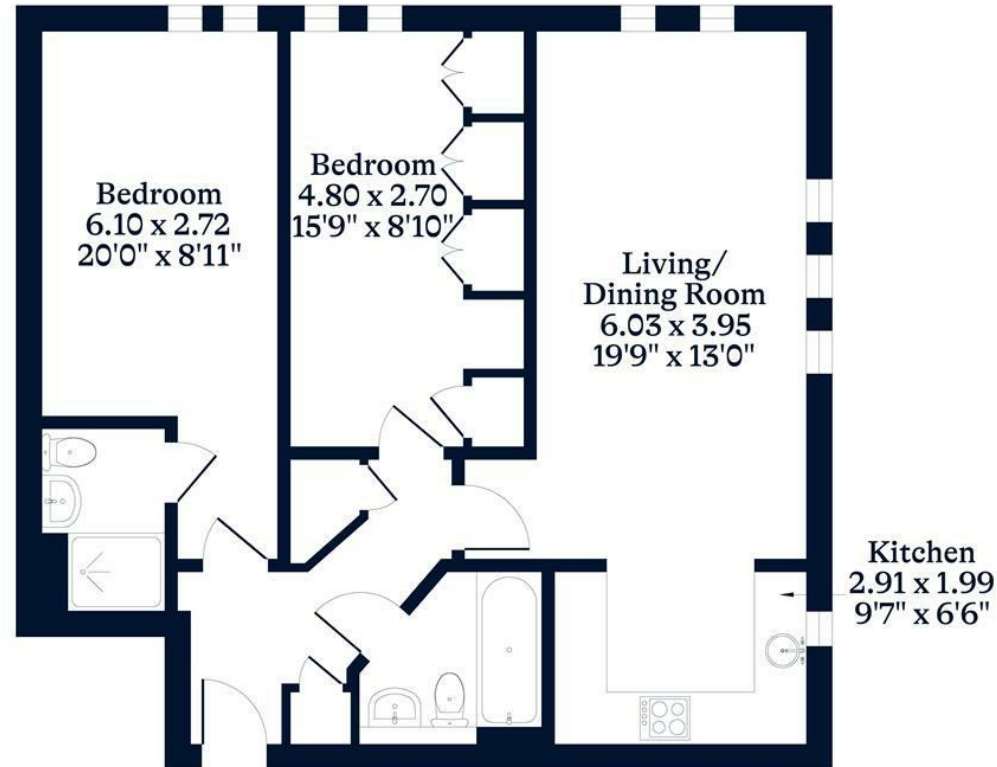
EPC rating D. Council Tax band C. Service Charge £1700pa. Ground Rent £300pa. Lease 136 years remaining.





APPROXIMATE FLOOR AREA
Apartment - 70.16 sq m - 755 sq ft
(Gross Internal Area)

NOT TO SCALE
This plan is for illustration purposes only



First Floor

This plan is for layout guidance only. Not drawn to scale unless stated. Windows and door openings are approximate. Whilst every care is taken in the preparation of this plan, please check all dimensions, shapes and compass bearings before making any decisions reliant upon them.

OSBORNEHEATH.CO.UK