

 5  4  4

O
|
H



Geffers Ride, *Ascot*

OSBORNE HEATH

A five bedroom, four bathroom detached house in a cul-de-sac, with a driveway and double garage close to Ascot High Street.

Downstairs there is a living room, family room, dining area, study, utility room, and a downstairsWC. The open-plan kitchen has dining space and bi-folding doors to the garden.

Upstairs there are three double bedrooms each with an en suite, as well as two additional bedrooms and a family bathroom

Outside there is driveway parking, a double garage, and turfed rear garden with decking.

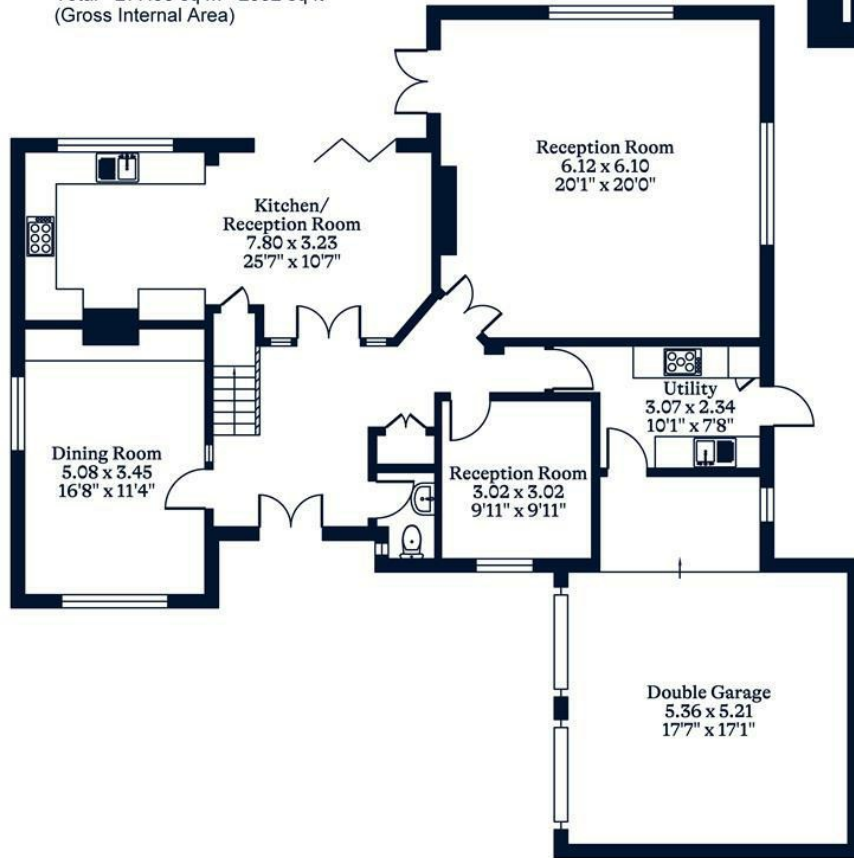
Geffers Ride is a cul-de-sac close to Ascot Racecourse. Other nearby places of interest include The Berkshire Golf Club, Coworth Park, Guards Polo Club, Legoland, The Lexicon, Sunningdale Golf Club, Swinley Forest, Wentworth Club and Windsor Great Park. Local schools include Ascot Heath, Charters, Cheapside, Hall Grove, Heathfield, Lambrook, LVS, The Marist, Papplewick, St Francis, St George's and St Mary's. The nearest train station is Ascot where trains run to London Waterloo, Reading and Guildford. Ascot is also convenient for the M3, M4, M25 and Heathrow Airport.

Lease Length 12-36 months. EPC D. Council Tax Band G. Deposit £5884. Holding Deposit £980. Pets Allowed.



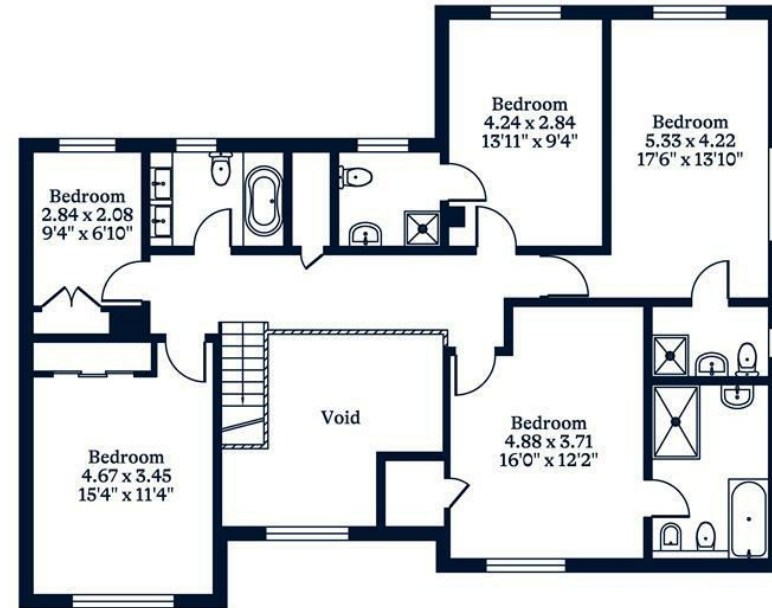


APPROXIMATE FLOOR AREA
 House - 244.39 sq m - 2631 sq ft
 Garage - 33.56 sq m - 361 sq ft
 Total - 277.95 sq m - 2992 sq ft
 (Gross Internal Area)



Ground Floor

NOT TO SCALE
 This plan is for illustration purposes only



First Floor

This plan is for layout guidance only. Not drawn to scale unless stated. Windows and door openings are approximate. Whilst every care is taken in the preparation of this plan, please check all dimensions, shapes and compass bearings before making any decisions reliant upon them.

OSBORNEHEATH.CO.UK