

🛏️ 4 🛋️ 1 🛁 3



Oxford Road, *Windsor*

OSBORNE HEATH

Short Let - A charming character home with four bedrooms, three bathrooms, plus bills and furniture included, conveniently located near Windsor town centre.

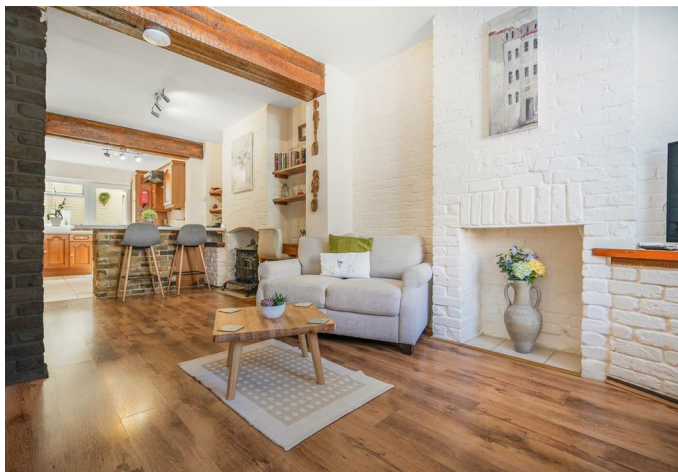
On the ground floor there is a living room with a log-burning fireplace and a kitchen with breakfast bar which leads to an enclosed utility space.

The first floor has a two double bedrooms with en suite shower rooms.

The top floor has two bedrooms with basins which share a W/C and shower room.

Oxford Road is located a walking distance from Windsor town centre. Windsor has a wide range of shops and restaurants as well as the Castle, Great Park, Racecourse and Legoland. Nearby train stations include Windsor & Eton Central and Windsor & Eton Riverside where trains run to London Paddington (via Slough) and London Waterloo. Windsor is also convenient for the M4, M25 and Heathrow Airport.

EPC rating C. Council Tax band N/A. Deposit £4,326. Holding Deposit £865. Lease Length 1-5 months.

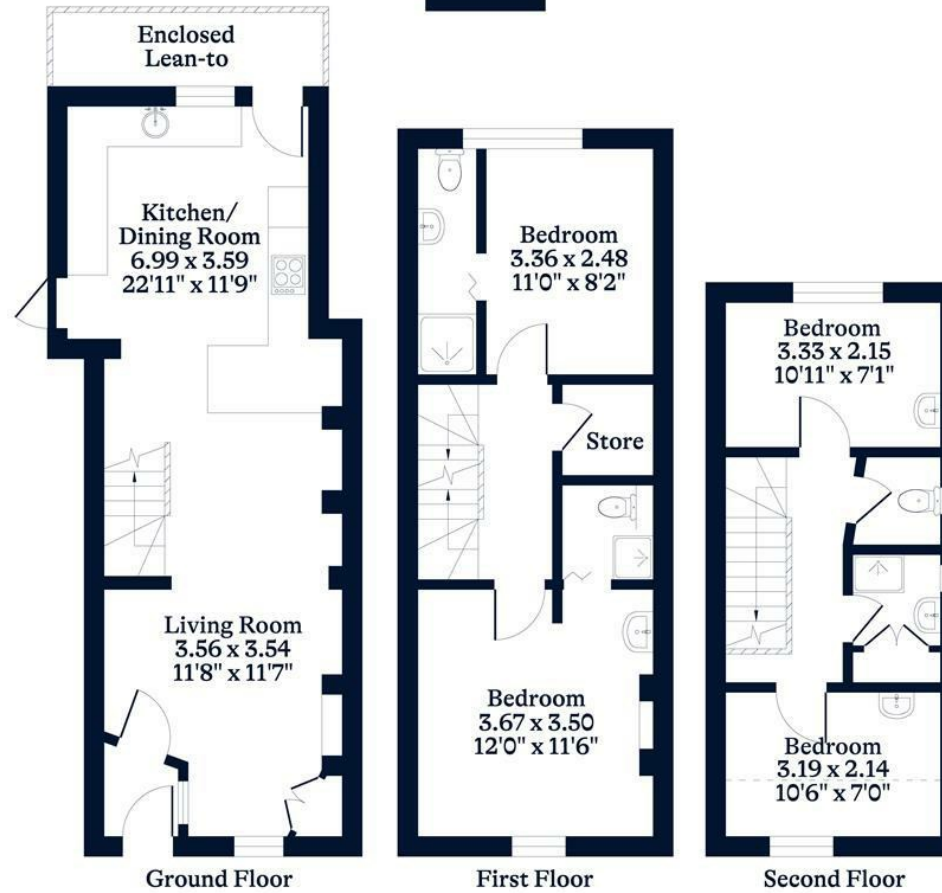




APPROXIMATE FLOOR AREA
House - 99.75 sq m - 1074 sq ft
(Gross Internal Area)



NOT TO SCALE
This plan is for illustration purposes only



This plan is for layout guidance only. Not drawn to scale unless stated. Windows and door openings are approximate. Whilst every care is taken in the preparation of this plan, please check all dimensions, shapes and compass bearings before making any decisions reliant upon them.

OSBORNEHEATH.CO.UK