

3 2 3

O
|
H



Beechwood Close, *Ascot*

OSBORNE HEATH

Semi detached, three double bedroom, three bathroom house with driveway parking.

Downstairs there is a family room, open plan kitchen with dining/living area with bi-folding doors leading out to the garden, utility room, downstairs shower room.

Upstairs the main bedroom has en-suite and Juliet balcony over looking the garden, two further double bedrooms and a family bathroom.

To the front of the house is driveway parking and to the rear is lawned garden backing onto the woods.

Beechwood Close is a small cul-de-sac close to Ascot Racecourse and Ascot Heath Infant & Primary School. Other nearby schools include Charters, Cheapside, Cranbourne, LVS, Papplewick and St Francis. The nearest train station is Ascot where services run to London Waterloo, Reading and Guildford. By road Ascot is convenient for the M3, M4, M25 and Heathrow Airport. Other than Ascot Racecourse other local places of interest include Coworth Park, The Berkshire Golf Club, Guards Polo Club, Legoland, Sunningdale Golf Club, Wentworth Club, Windsor Castle and Windsor Great Park.

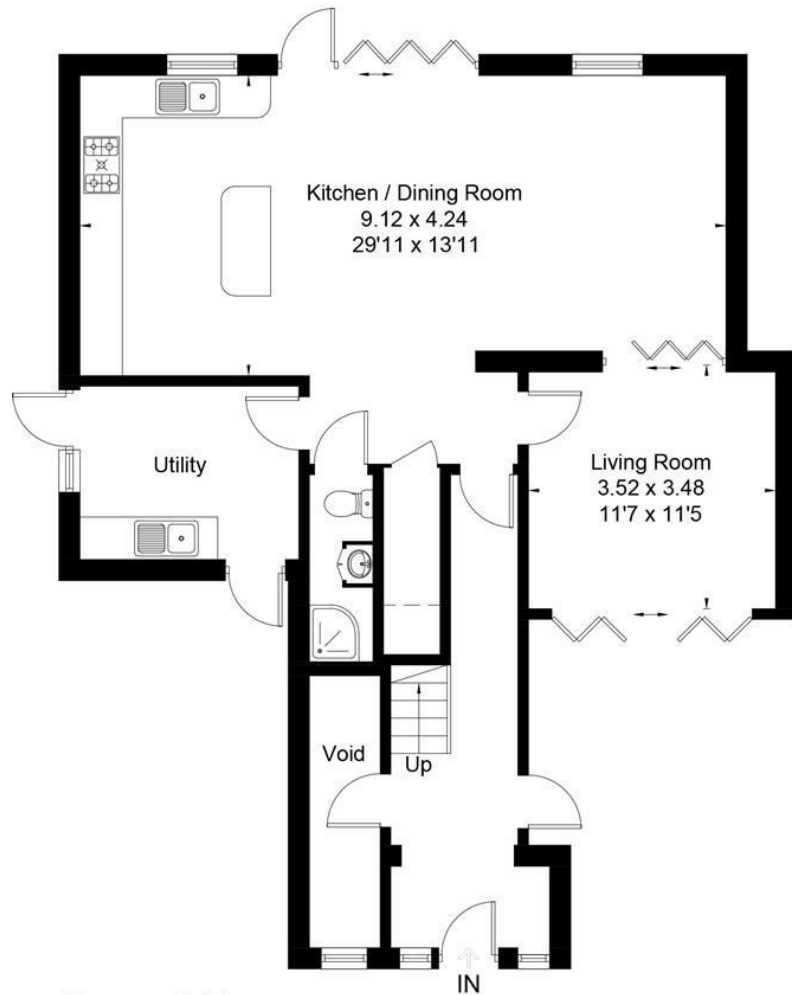
EPC rating E. Council Tax Band D. Lease length - 6 months. Deposit £2,884. Holding Deposit £576.

Garage and some rooms not included but floorplan true to what is available

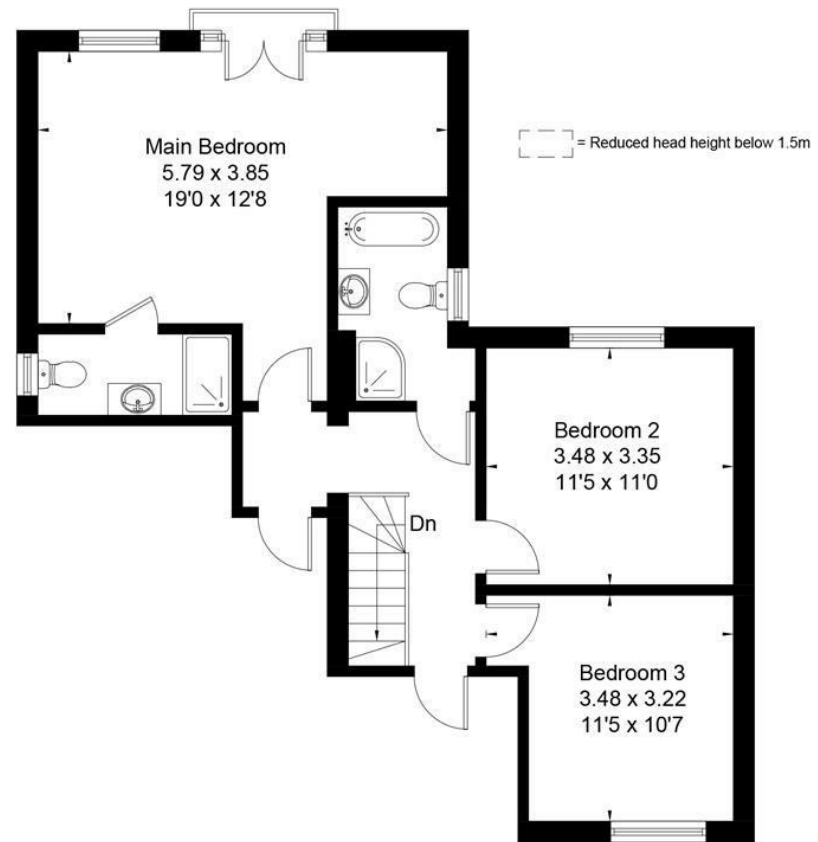




Approximate Area = 141.4 sq m / 1522 sq ft
(Including Garage / Excluding Void)
Including Limited Use Area (1.2 sq m / 13 sq ft)



Ground Floor



First Floor

Surveyed and drawn in accordance with the International Property Measurement Standards (IPMS 2: Residential)
fourwalls-group.com 301599