

4 1 2



Heathlands Place, Ascot

OSBORNE HEATH

A four bedroom, two bathroom family house with off-street parking and a West facing garden with no onward chain.

On the ground floor is a modern kitchen with dining space, living and dining room and a downstairs WC.

The first floor has three bedrooms, two of which are doubles and a modern bathroom.

On the second floor is the principal bedroom with built-in wardrobes and an en suite.

This property comes with two allocated parking spaces and a west facing garden with side access.

Heathlands Place is off Priory Road in the village of Chavey Down, Ascot. Nearby are a number of Ofsted outstanding schools including Ascot Heath Infant and Junior School, Charters, St Joseph's Primary School and Ranelagh Secondary School. The nearest train stations are Ascot and Martins Heron where services run to London Waterloo, Reading and Guildford. By road Ascot is convenient for the M3, M4, M25 and Heathrow Airport. Nearby points of interest include Ascot Racecourse, Legoland, Sunningdale Golf Club, Wentworth Club, Windsor Castle and Windsor Great Park.

EPC rating B. Council Tax band E.

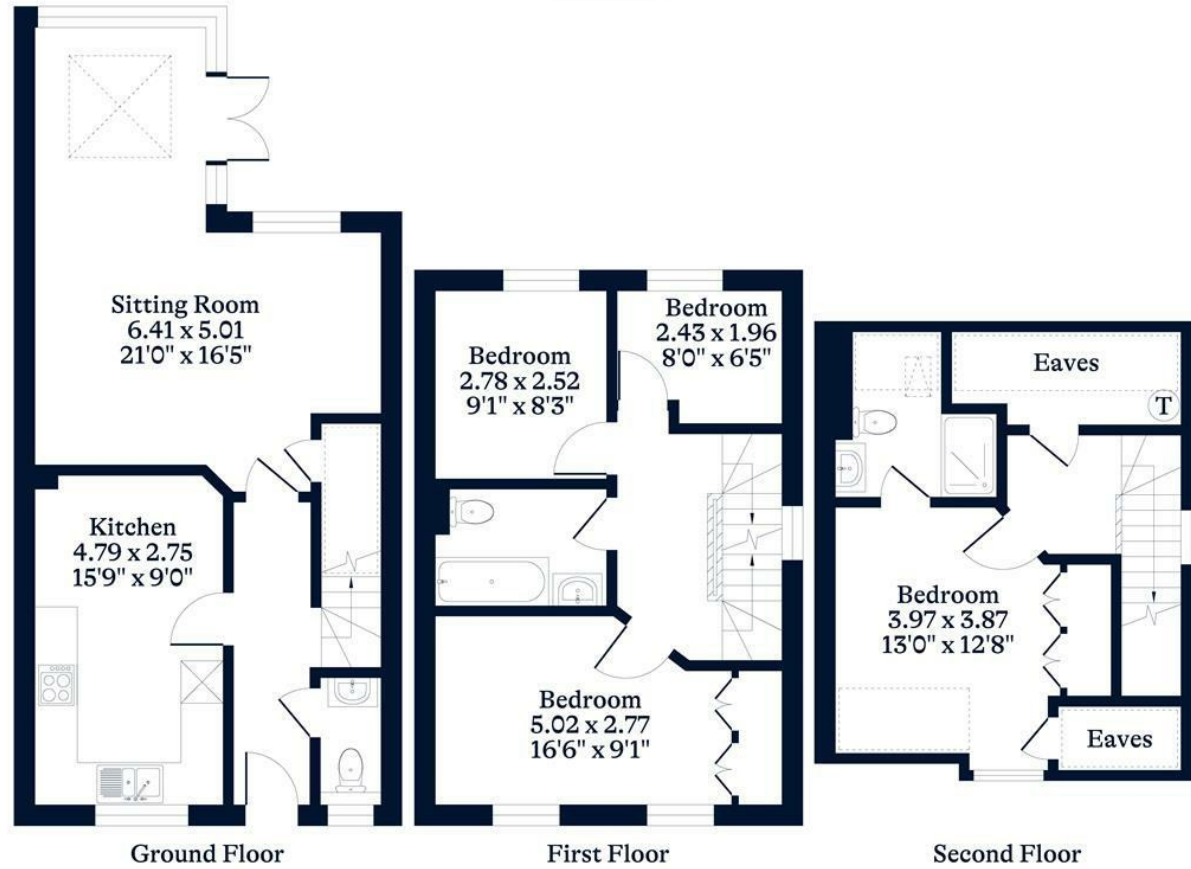




APPROXIMATE FLOOR AREA
House - 112.6 sq m - 1212 sq ft
(Gross Internal Area)



NOT TO SCALE
This plan is for illustration purposes only



This plan is for layout guidance only. Not drawn to scale unless stated. Windows and door openings are approximate. Whilst every care is taken in the preparation of this plan, please check all dimensions, shapes and compass bearings before making any decisions reliant upon them.

OSBORNEHEATH.CO.UK