

🛏️ 2 🪑 2 🛁 1



Sunninghill Road, *Ascot*

OSBORNE HEATH

A well presented two bedroom semi-detached house with driveway parking for several vehicles.

Once a three bedroom property, this home has been altered to make it a two bedroom property and the current owners have decorated throughout.

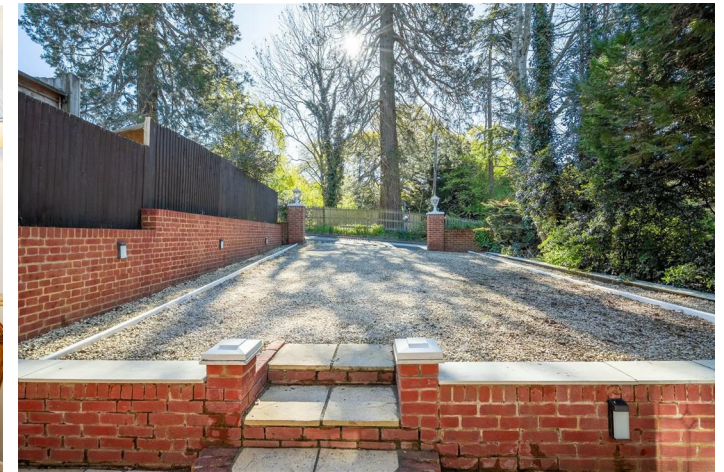
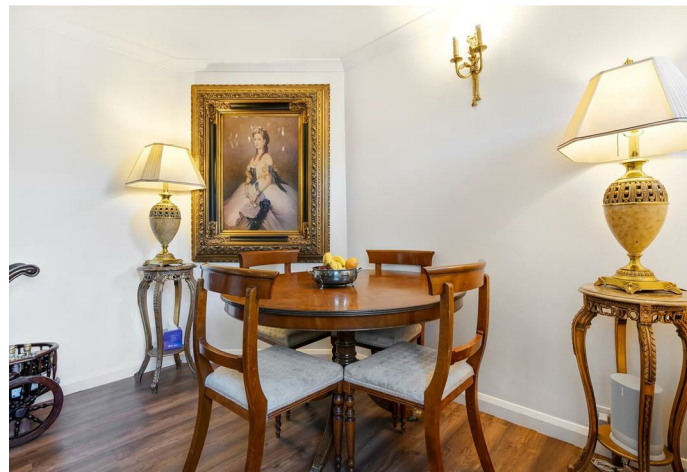
Downstairs there is a living room with chimney breast and a modern kitchen with dining area leading out to the garden.

Upstairs there are two bedrooms and a bathroom with bath and separate shower.

To the front of the house there is driveway parking for up to four vehicles, plus side access to the rear garden. The garden has patio and lawn areas, plus rear access to an extra parking space for one small vehicle.

Park View is on Sunninghill Road in the popular village of Cheapside, close to Cheapside Primary School and the Ascot Gate entrance into Windsor Great Park. Other nearby schools include Charters, Holy Trinity, St Francis and St Michaels. Local places of interest include Ascot Racecourse, Coworth Park, Guards Polo Club, Legoland, The Lexicon, Sunningdale Golf Club, Virginia Water Lake, Wentworth Club and Windsor Castle. The station in Ascot runs trains to London Waterloo, Guildford and Reading. Cheapside is also convenient for the M3, M4, M25 and Heathrow Airport.

EPC rating D. Council Tax band D.

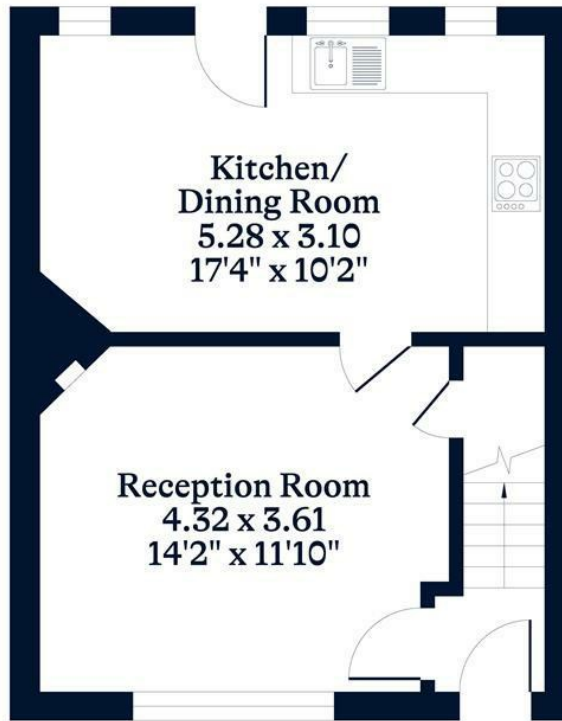




APPROXIMATE FLOOR AREA
House - 73.90 sq m - 796 sq ft
(Gross Internal Area)



NOT TO SCALE
This plan is for illustration purposes only



Ground Floor



First Floor

This plan is for layout guidance only. Not drawn to scale unless stated. Windows and door openings are approximate. Whilst every care is taken in the preparation of this plan, please check all dimensions, shapes and compass bearings before making any decisions reliant upon them.

OSBORNEHEATH.CO.UK