

5 3 3

O
|
H



Woodend Drive, *Sunninghill*

OSBORNE HEATH

Five bedroom detached family home with a driveway, garage and a large west facing garden.

On the ground floor the property has study, dining room running through to the kitchen, living room with open fire place and a further reception room and a WC.

On the first floor is the principal bedroom with en suite, three further bedrooms with the family bathroom.

Outside is driveway parking and side access leading out onto the large rear garden.

Woodend Drive is in-between St Mary's Hill and Lower Village Road. The nearest train station is Ascot where services run to London Waterloo, Reading and Guildford. Nearby schools include Charters, St Francis, St Michaels and The Marist. Nearby Sunninghill village has a number of local high street businesses and great restaurants and pubs. Local places of interest include Ascot Racecourse, Coworth Park, Guards Polo Club, Legoland, The Lexicon, Wentworth Club and Windsor Great Park. Ascot is also convenient for the M3, M4, M25 and Heathrow Airport.

EPC rating D. Council tax band G.

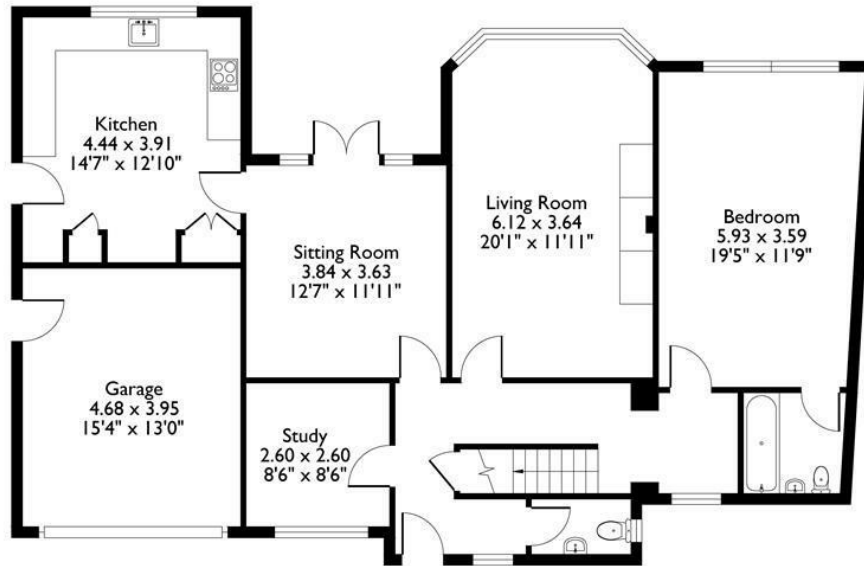




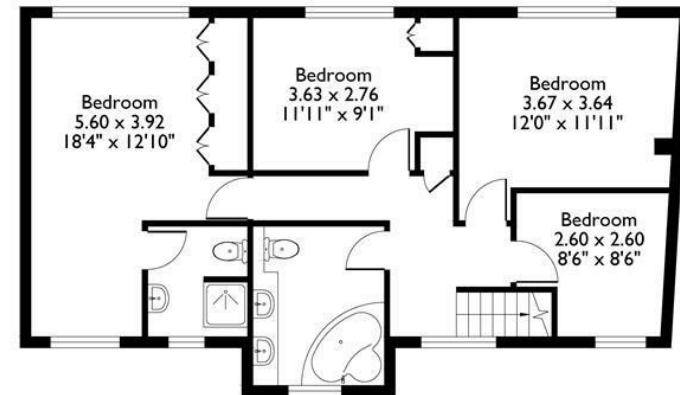
NOT TO SCALE

Approximate Floor Area
House 191.59 sq m - 2062 sq ft
(Gross Internal Area)
(Including Garage)

This plan is for illustration purposes only.



Ground Floor



First Floor

This plan is for layout guidance only. Not drawn to scale unless stated. Windows and door openings are approximate. Whilst every care is taken in the preparation of this plan, please check all dimensions, shapes and compass bearings before making any decisions reliant upon them.

© Property Shoot Ltd