

🛏️ 2 🪑 1 🚿 1



Woodmill Court, London Road, Ascot

OSBORNE HEATH

A two bedroom apartment with allocated parking and within walking distance of Ascot high street and station.

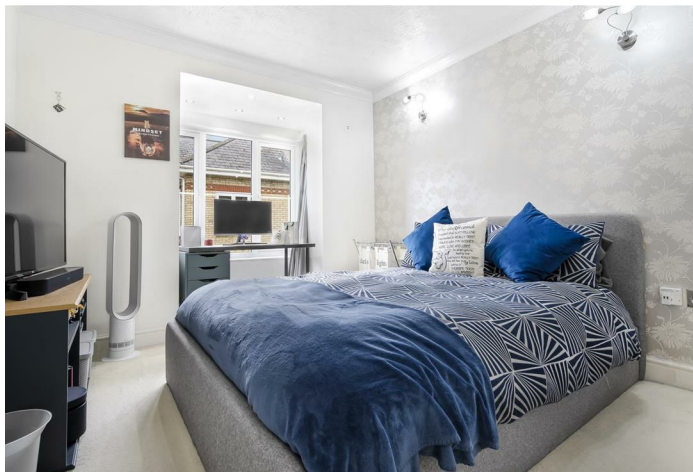
This apartment offers a principal bedroom with built-in wardrobes, family bathroom, guest bedroom, open plan kitchen, living and dining area with a breakfast bar off the kitchen and a wc.

Outside woodmill court has communal grounds, visitors parking and two allocated space that come with the apartment.

Woodmill Court is a small private development close to Ascot Racecourse. Other nearby points of interest include Coworth Park, Guards Polo Club, Legoland, Sunningdale Golf Club, Wentworth Club and Windsor Great Park. The nearest train station is Ascot where services run to London Waterloo, Reading and Guildford. By road Ascot is convenient for the M3, M4, M25 and Heathrow Airport.

EPC rating B. Council tax C. Lease 102 years remaining. Ground rent £195pa. Service charge £1,700pa





APPROXIMATE FLOOR AREA
69.40 sq m - 747 sq ft
(Gross Internal Area)



NOT TO SCALE
This plan is for illustration purposes only



Bedroom
4.39 x 2.92
14'5" x 9'7"

Bedroom
4.39 x 3.00
14'5" x 9'10"

**Kitchen/
Sitting Room**
7.09 x 5.13
23'3" x 16'10"

First Floor

This plan is for layout guidance only. Not drawn to scale unless stated. Windows and door openings are approximate. Whilst every care is taken in the preparation of this plan, please check all dimensions, shapes and compass bearings before making any decisions reliant upon them.

OSBORNEHEATH.CO.UK