

3 3 3

O
|
H



The Walled Garden, *Ascot*

OSBORNE HEATH

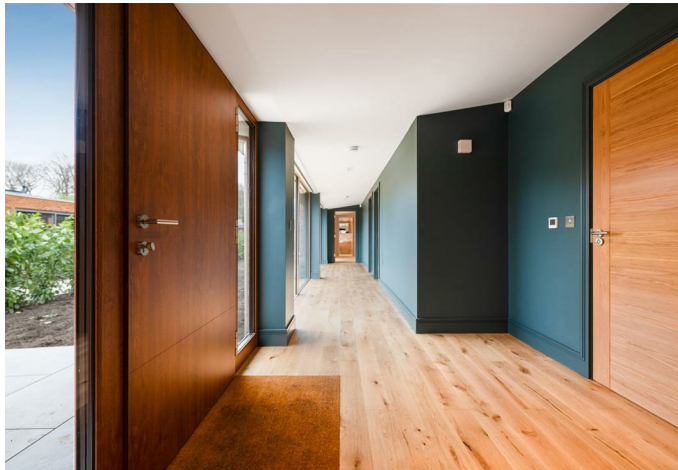
A brand new three double bedroom, three bathroom detached bungalow with allocated parking set within a small gated community.

This newly constructed detached bungalow has a principal bedroom with a walk-in wardrobe and a four piece en suite, two further double bedrooms both with en suites and built-in wardrobes, an open plan kitchen, living with a stuv 22 log burning stove and dining room with a fully integrated kitchen and a breakfast bar with sliding glass doors, study, snug and utility room.

Outside the property offers a gated communal entrance and allocated parking. The property also has an enclosed walled garden with further communal space at the front of the property.

Each of these properties has Eco credentials and the latest technology which includes underfloor heating powered by air source heat pumps, solar PV panels, battery storage and mechanical heat recovery ventilation.

Walled Garden is a gated development of four detached bungalows located within the village of Cheapside. Cheapside is a small village located on the outskirts of Ascot. The many nearby schools include excellent state, private, and international options including Charters, Cheapside, Holy Trinity, The Marist, and St Francis. Local places of interest include Ascot and Windsor racecourses, Wentworth and Sunningdale golf clubs, well-known hotels like Coworth Park and Pennyhill Park, Virginia Water, Savill Garden, and Guards Polo Club (all part of Windsor Great Park), and Legoland. Ascot train station is on the London Waterloo-Reading line and Cheapside is also convenient for the M3, M4, M25 and Heathrow Airport

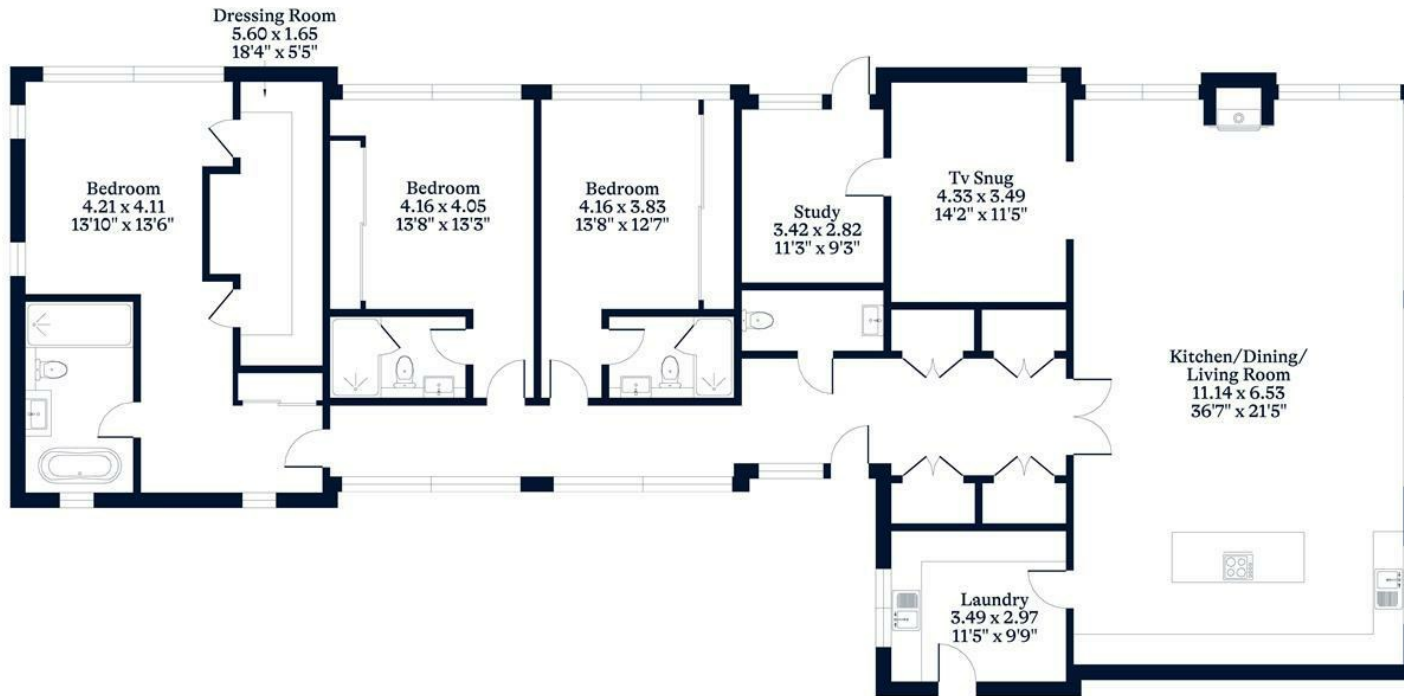




APPROXIMATE FLOOR AREA
House - 244.50 sq m - 2632 sq ft
(Gross Internal Area)



NOT TO SCALE
This plan is for illustration purposes only



This plan is for layout guidance only. Not drawn to scale unless stated. Windows and door openings are approximate. Whilst every care is taken in the preparation of this plan, please check all dimensions, shapes and compass bearings before making any decisions reliant upon them.

OSBORNEHEATH.CO.UK