

🛏️ 2 🪑 1 🛁 2



Amber Court, *Sunninghill*

OSBORNE HEATH

Short Let- A modern two bedroom, two bathroom maisonette with allocated parking, in the heart of Sunninghill Village.

This ground floor maisonette has an open plan kitchen, living and dining area, double bedroom with built-in wardrobes, en suite shower room, family bathroom and a further second bedroom with built-in wardrobes.

Outside there is allocated parking.

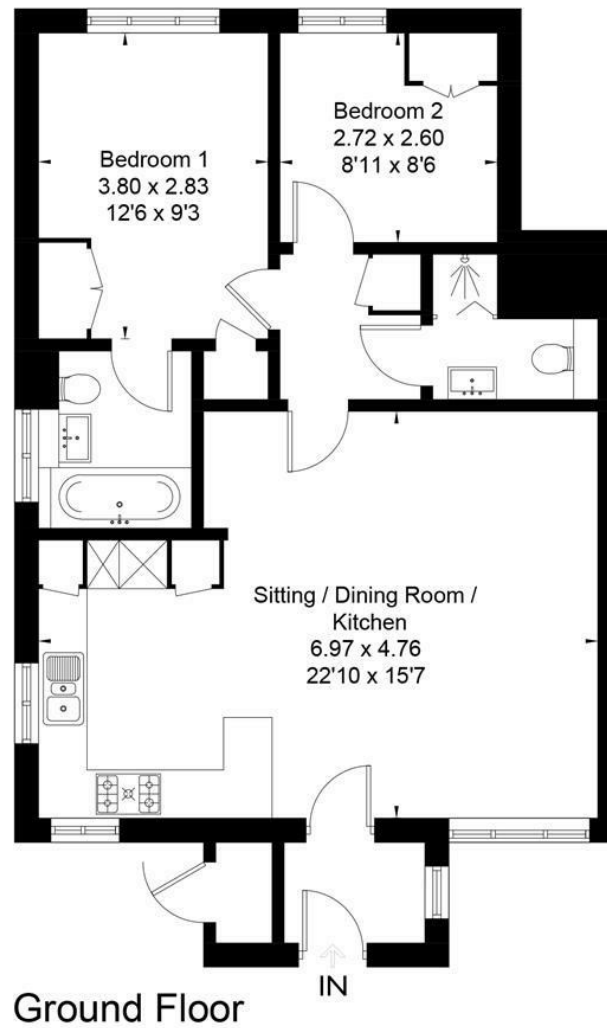
Amber Court is a small development in Sunninghill village, in-between Ascot and Sunningdale where the train stations run services to London, Reading and Guildford. The village has a number of local high street businesses and great restaurants and pubs. Nearby places of interest include Ascot Racecourse, The Berystede, Coworth Park, Guards Polo Club, Wentworth Club and Windsor Great Park. Sunninghill is also convenient for the M3, M4, M25 and Heathrow Airport.

Short Let- Bills inclusive of the rent. EPC rating C. Tenancy Lease 1-3 months. Council Tax Band D. Deposit £2,769. Holding Deposit £692.





Approximate Area = 67.8 sq m / 730 sq ft
Including Limited Use Area (0.3 sq m / 3 sq ft)



Surveyed and drawn in accordance with the International Property Measurement Standards (IPMS 2: Residential)
fourwalls-group.com 297175