

 7  4  3



O
|
H

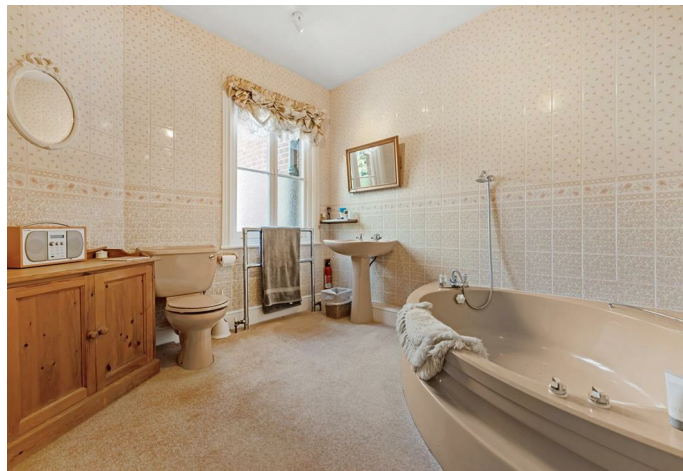
Devenish Road, *Sunningdale*

OSBORNE HEATH

A seven bedroom detached family home situated on a 0.75 plot located within walking distance to Sunningdale train station and shops.









The ground floor has a living room with an open fireplace, conservatory, study, dining room, kitchen with dining space, utility room, workshop and a WC.

On the first floor is the principal bedroom with a walk-in wardrobe and en suite, a guest room with built-in wardrobes and en suite, five further double bedrooms and a shower room.

Outside the property sits on a 0.75 acre plot with driveway parking, a double garage and gardens that wrap around the property.

Berrybridge House is located off the Devenish road. Nearby schools include Charters Secondary School, Holy Trinity, Lambrook, The Marist, Papplewick, St Francis, St George's, St Mary's and St Michaels. Local places of interest include Ascot Racecourse, Coworth Park, Guards Polo Club, Sunningdale Golf Club, Virginia Water Lake, Wentworth Club and Windsor Great Park. The station in Sunningdale runs trains to London Waterloo and Reading. Sunningdale is also convenient for the M3, M4, M25 and Heathrow Airport.

EPC rating D. Council Tax band H.



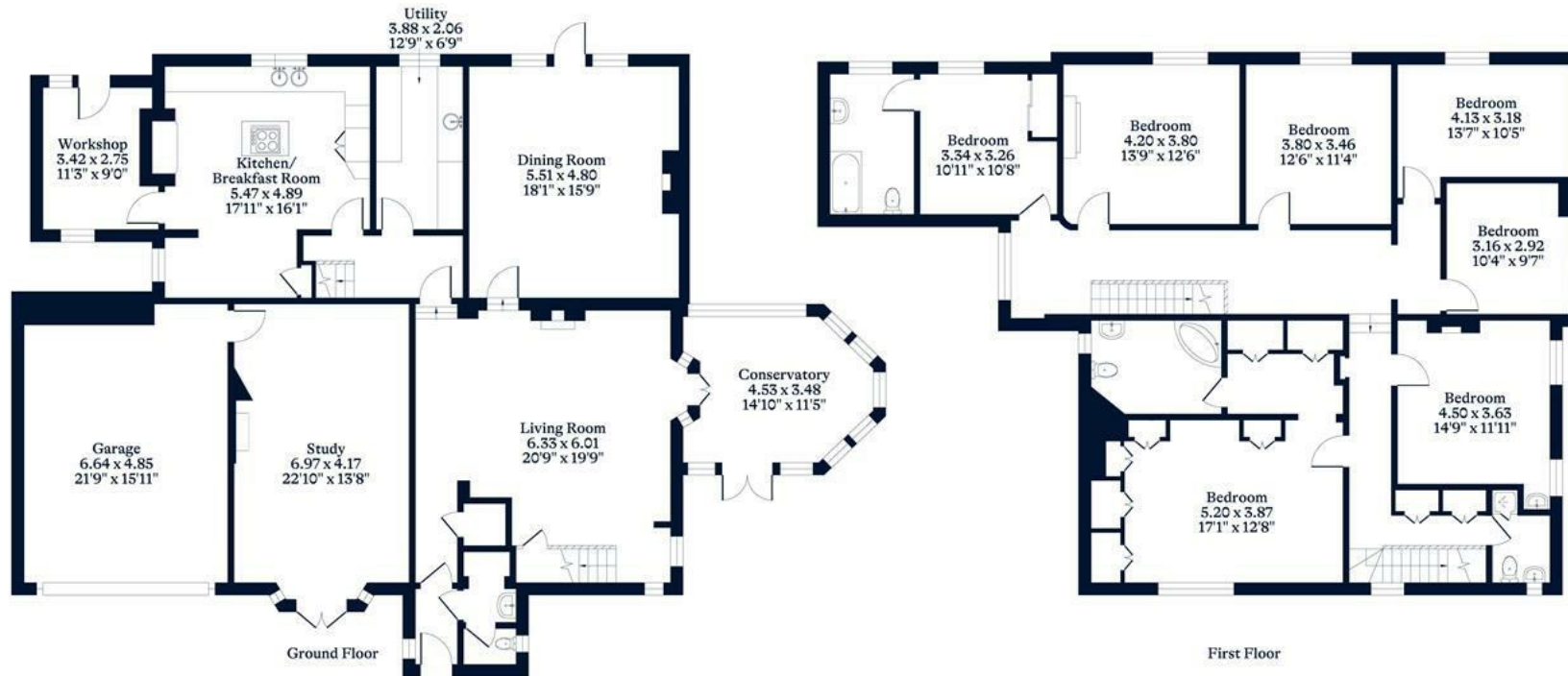




APPROXIMATE FLOOR AREA

House - 331.08 sq m - 3564 sq ft
Garage - 30.65 sq m - 330 sq ft
Total - 361.73 sq m - 3894 sq ft
(Gross Internal Area)

NOT TO SCALE
This plan is for illustration purposes only



This plan is for layout guidance only. Not drawn to scale unless stated. Windows and door openings are approximate. Whilst every care is taken in the preparation of this plan, please check all dimensions, shapes and compass bearings before making any decisions reliant upon them.



Visit osborneheath.co.uk

Call 01344 627777

Email ascotsales@osborneheath.co.uk

OSBORNE HEATH