

🛏️ 2   🛋️ 2   🛁 1



# High Street, *Sunninghill*

OSBORNE HEATH

# A modern two bedroom maisonette in the centre of Sunninghill Village, with two allocated parking spaces.

This first floor maisonette comprises a modern kitchen with dining space, sitting room, two double bedrooms with built-in wardrobes and a bathroom.

The property has its own private entrance and benefits from having two allocated parking spaces.

High Street is in the centre of Sunninghill village. The village has a number of local high street businesses, great restaurants and pubs. Nearby places of interest include Ascot Racecourse, Coworth Park, Guards Polo Club, Legoland, The Lexicon, Wentworth Club and Windsor Great Park. Sunninghill is also convenient for the M3, M4, M25 and Heathrow Airport.

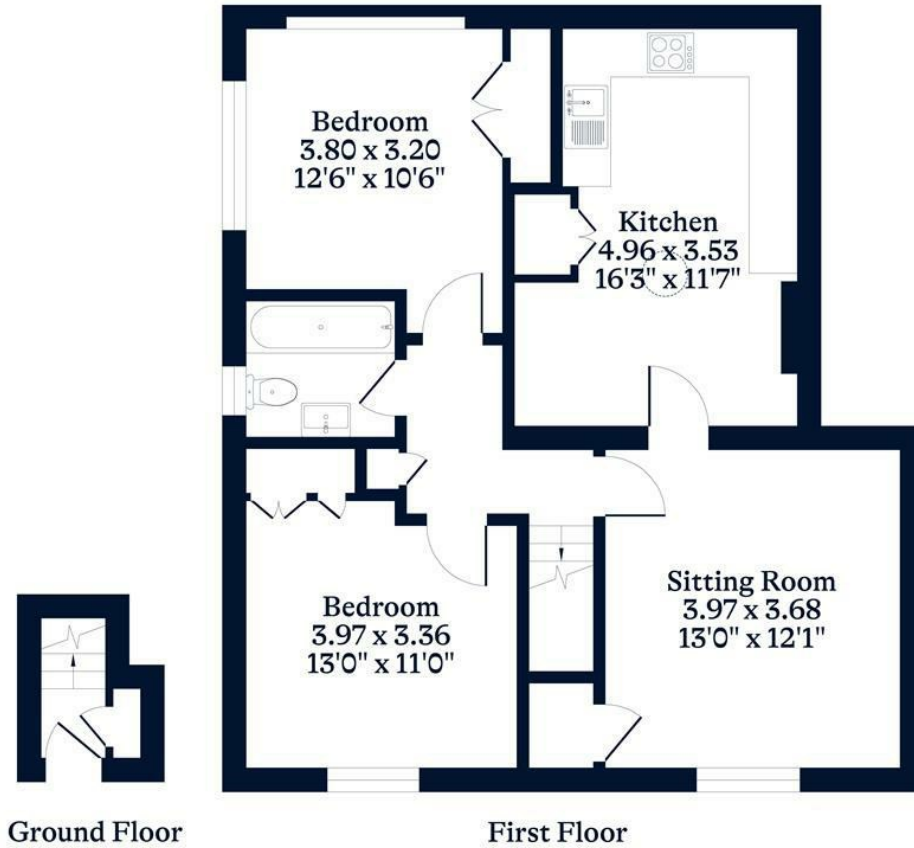
EPC rating D. Council Tax Band C. Service Charge TBC. Per Corn Ground Rent. lease 148 remaining.





**APPROXIMATE FLOOR AREA**  
Maisonette - 70.70 sq m - 761 sq ft  
(Gross Internal Area)

**NOT TO SCALE**  
This plan is for illustration purposes only



This plan is for layout guidance only. Not drawn to scale unless stated. Windows and door openings are approximate. Whilst every care is taken in the preparation of this plan, please check all dimensions, shapes and compass bearings before making any decisions reliant upon them.

[OSBORNEHEATH.CO.UK](http://OSBORNEHEATH.CO.UK)