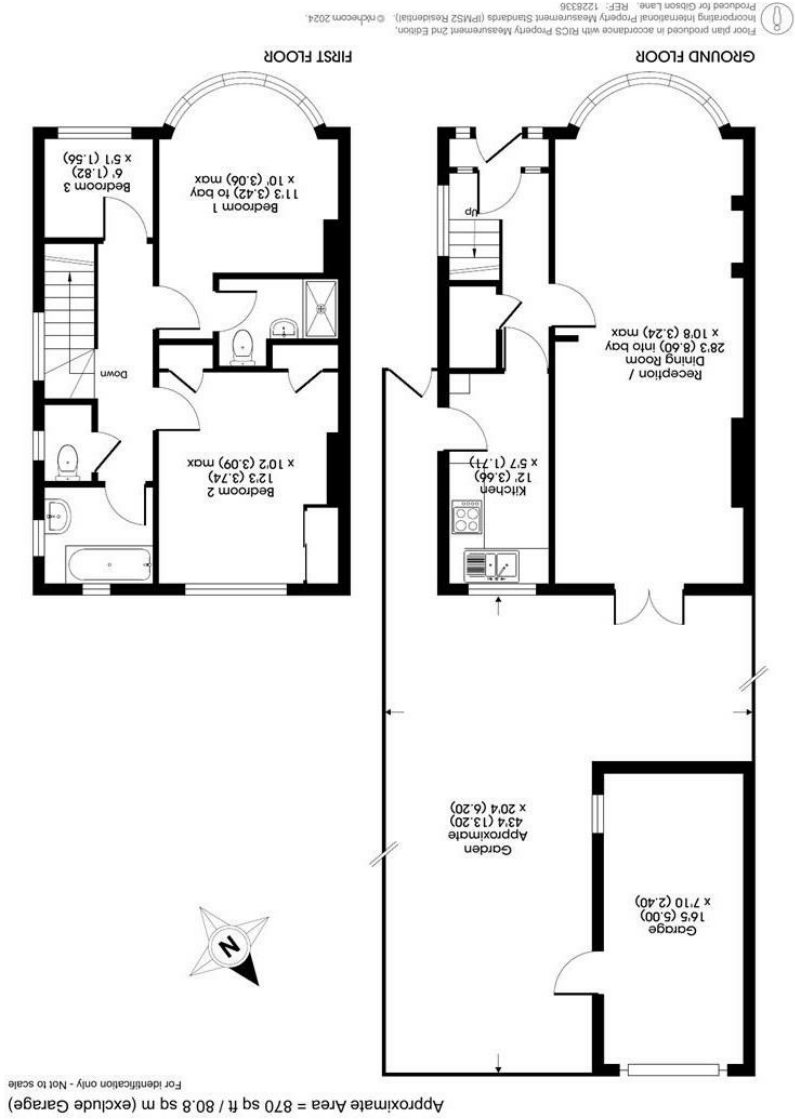


323 Richmond Road
Ham
Surrey
KT2 5QU
www.gibsonlane.co.uk
Tel: 020 8247 9444





- Attractive 1930s semi-detached house
- Three bedrooms & two bath/shower rooms
- No onward chain
- Delightful 43ft rear garden
- Popular North Kingston location
- Convenient for excellent local schools
- Single garage with rear access
- Presented to a good standard throughout
- EPC rating D
- Council tax band E

* Local Authority: Kingston upon Thames

Description

A charming 1930's semi detached family home situated on this sought after North Kingston Road and ideally positioned for excellent local schools. This attractive family home provides generous accommodation approaching 900sqft arranged over two floors comprising: double reception room, fitted kitchen with shaker style units, three bedrooms, family bathroom with separate W.C and an en-suite shower room to the front bedroom. Outside there is a paved front garden and a delightful 43ft rear garden with single garage.

Situation

Tudor Drive is a popular residential road ideally situated in the sought after North Kingston area. The property is within close proximity of Richmond Park and conveniently positioned for the River Thames and both Norbiton and Kingston stations giving direct access into Waterloo. Kingston town centre with its array of shops and restaurants is a short distance away and the A3 with routes to London and the M25 is easily accessible by car. The standard of schooling in the immediate area is excellent within both the private and state sector.

