

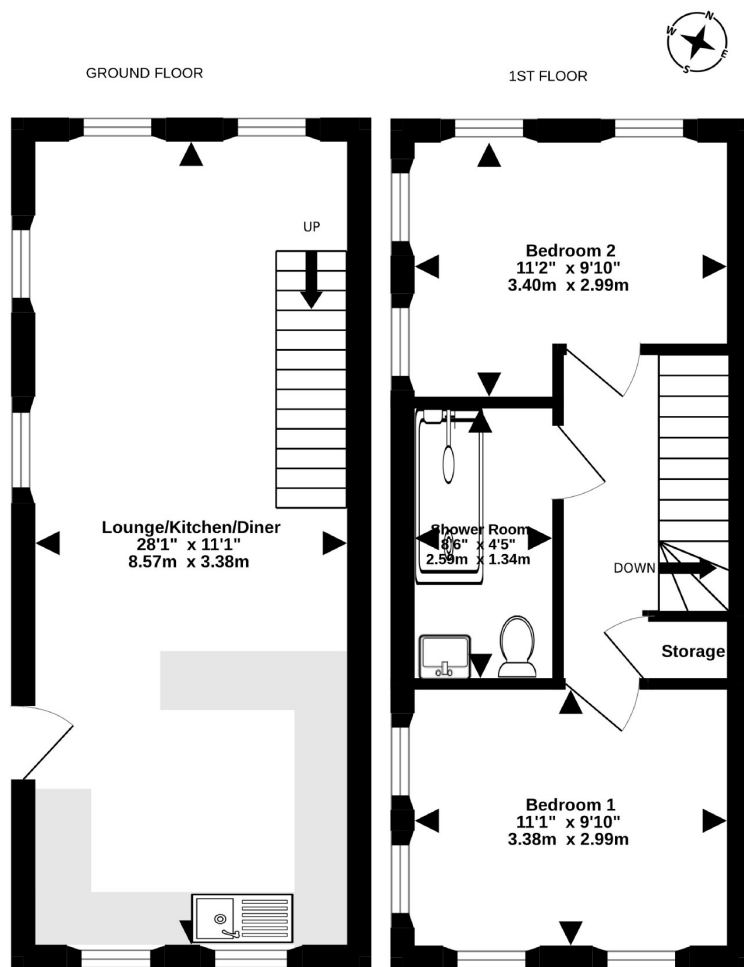


St George - £270,000

2 bed maisonette

20 Albert Grove South, BS5 7HU





FROST AND RED HOUSE, ST GEORGE, BS5 7HU

TOTAL FLOOR AREA : 635sq.ft. (59.0 sq.m.) approx.

Whilst every attempt has been made to ensure the accuracy of the floorplan contained here, measurements of doors, windows, rooms and any other items are approximate and no responsibility is taken for any error, omission or mis-statement. This plan is for illustrative purposes only and should be used as such by any prospective purchaser. The services, systems and appliances shown have not been tested and no guarantee as to their operability or efficiency can be given.
Made with Metropix ©2023



A spacious 2 double bedroom converted maisonette in BS5, set over two floors with private secure access and high ceilings.

Overview

This modern and airy apartment also consists of open living to the ground floor, two generous bedrooms and a family bathroom to the first and gated allocated parking to the rear. The property also has a spacious loft space perfect for storage. An excellent investment opportunity in an area which is constantly growing and increasing in popularity and value.

Location

The property is situated in the increasingly popular area of St George with the stunning St George Park and the lively Church Road a short distance away.

This stunning maisonette filled with character is in great condition throughout.

Material Information (Provided by the Owner) - Leasehold and council Tax Band B



Downend Branch

11a Badminton Road, Downend, Bristol,
South Gloucestershire, BS16 6BD

Call: 0117 244 1050

Mail: downendsales@oceanhome.co.uk

Search: oceanhome.co.uk

References to the Tenure of a Property are based on information supplied by the Seller. The Agent has not had sight of the title documents. Lease details, service ground rent (where applicable) are given as a guide only and should be checked and confirmed by your solicitor prior to exchange of contracts.