



**Fishponds Asking price £425,000**

**3 bed end of terrace house  
1 The Berries, BS16 2JZ**

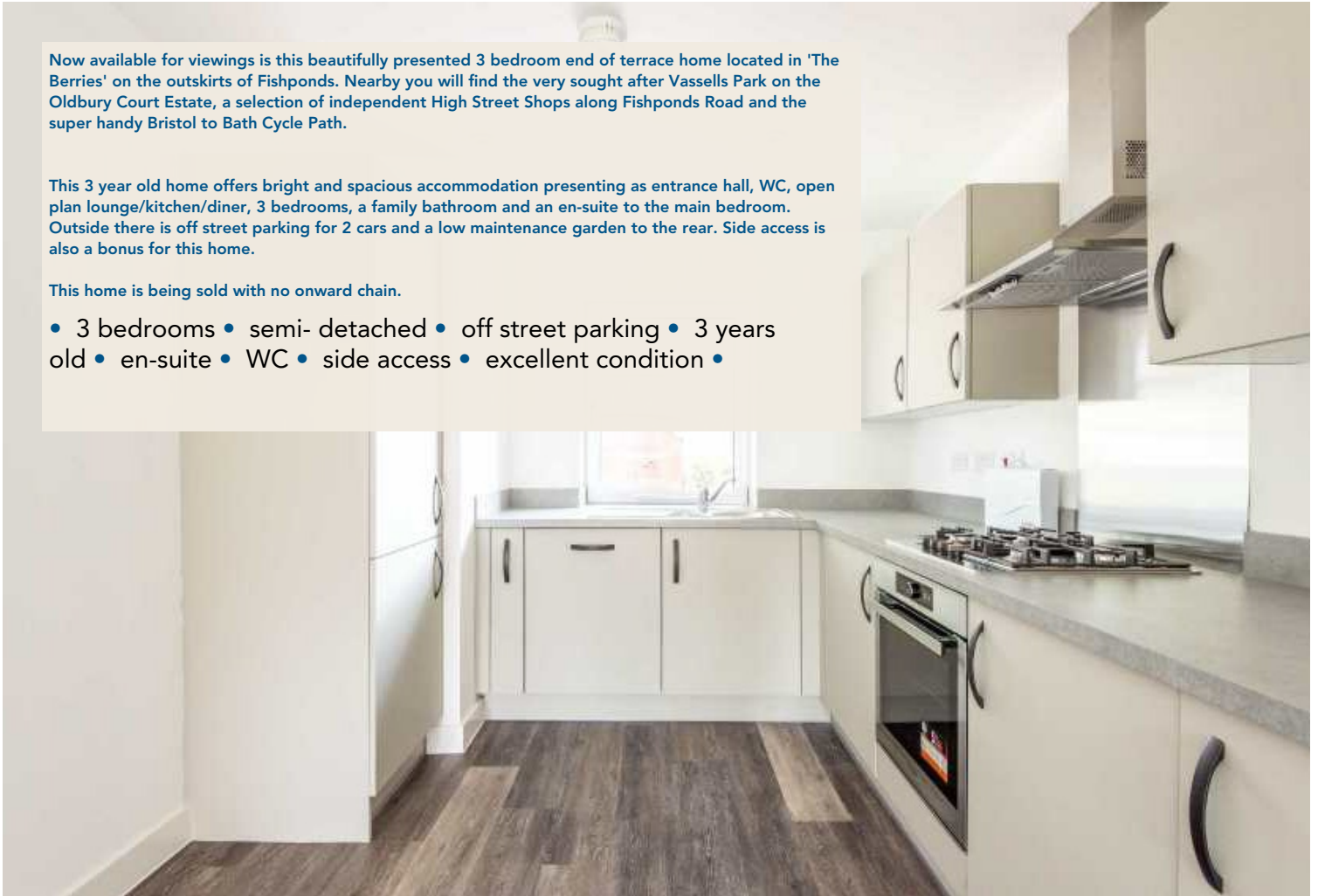


Now available for viewings is this beautifully presented 3 bedroom end of terrace home located in 'The Berries' on the outskirts of Fishponds. Nearby you will find the very sought after Vassells Park on the Oldbury Court Estate, a selection of independent High Street Shops along Fishponds Road and the super handy Bristol to Bath Cycle Path.

This 3 year old home offers bright and spacious accommodation presenting as entrance hall, WC, open plan lounge/kitchen/diner, 3 bedrooms, a family bathroom and an en-suite to the main bedroom. Outside there is off street parking for 2 cars and a low maintenance garden to the rear. Side access is also a bonus for this home.

This home is being sold with no onward chain.

- 3 bedrooms • semi- detached • off street parking • 3 years old • en-suite • WC • side access • excellent condition •





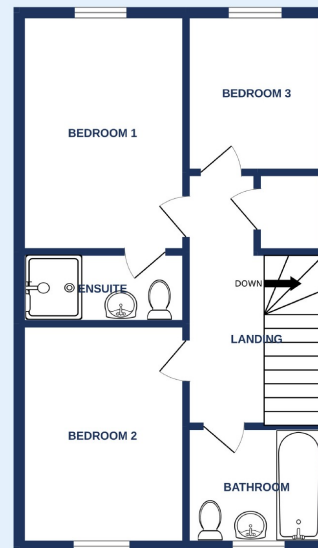


the place for...  
estate agents  
property lawyers  
financial services  
lettings & management  
land & new homes  
wills & probate  
surveyors  
you.

GROUND FLOOR



1ST FLOOR



Whilst every attempt has been made to ensure the accuracy of the floorplan contained herein, measurements of doors, windows, rooms and any other items are approximate and no responsibility is taken for any error, omission or mis-statement. This plan is for illustrative purposes only and should be used as such by any prospective purchaser. The services, systems and appliances shown have not been tested and no guarantee as to their operability or efficiency can be given.  
Made with Metropix i5022

## Downend Branch

11a Badminton Road, Downend, Bristol, South Gloucestershire,

Call: 0117 244 1050 Mail: [downendsales@oceanhome.co.uk](mailto:downendsales@oceanhome.co.uk)

Search: [oceanhome.co.uk](http://oceanhome.co.uk)

References to the Tenure of a Property are based on information supplied by the Seller. The Agent has not had sight of the title documents. Lease details, service ground rent (where applicable) are given as a guide only and should be checked and confirmed by your solicitor prior to exchange of contracts