

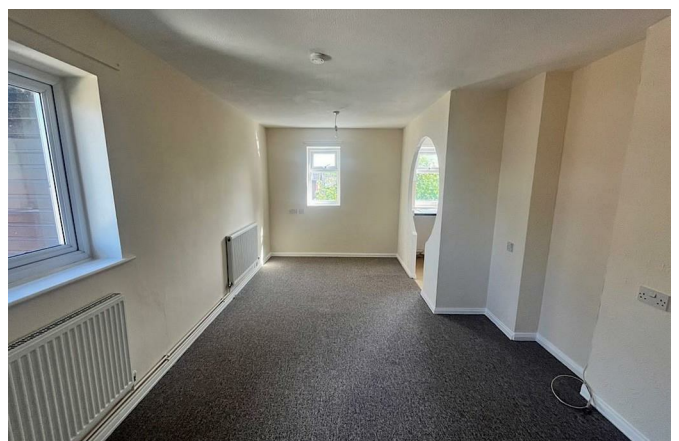
39 Briery Lane Bicton Heath Shrewsbury SY3 5DN



1 Bedroom Studio
£500 PCM

The features

- FIRST FLOOR STUDIO APARTMENT
- KITCHEN
- PARKING SPACE
- LIVING/BEDROOM
- SHOWER ROOM
- EPC RATING C



A well presented, first floor one bedroom studio apartment. Accommodation comprises: Open plan bedroom/living room/kitchen area, Shower room with white suite. Windows to dual aspect and parking.

Property details

STUDIO

With carpet, centre pendant, magnolia painted wall,
Kitchen, Shower room with Low Level WC, vinyl
flooring, basin and shower

39 Briery Lane, Bicton Heath, Shrewsbury, SY3 5DN.

**1 Bedroom Studio
£500 PCM**





Judy Bourne

Director at Monks

judy@monks.co.uk

Get in touch

Call. 01743 361422

Email. info@monks.co.uk

Click. www.monks.co.uk

Shrewsbury office

10a-11 Shoplatch,
Shrewsbury, Shropshire, SY1

We're available 7 days a week

HOME – four words that define who,
and what we are:

Honest, Original, Motivated, Empathetic

Energy Efficiency Rating		
	Current	Potential
Very energy efficient - lower running costs		
(92 plus) A		
(81-91) B		
(69-80) C		
(55-68) D		
(39-54) E		
(21-38) F		
(1-20) G		
Not energy efficient - higher running costs		
England & Wales	EU Directive 2002/91/EC	

Environmental Impact (CO ₂) Rating		
	Current	Potential
Very environmentally friendly - lower CO ₂ emissions		
(92 plus) A		
(81-91) B		
(69-80) C		
(55-68) D		
(39-54) E		
(21-38) F		
(1-20) G		
Not environmentally friendly - higher CO ₂ emissions		
England & Wales	EU Directive 2002/91/EC	

Monks for themselves and for the vendors of this property, whose agents they are give notice that:

- These particulars provide a general outline only for the guidance of intended purchasers and do not constitute part of an offer or contract.
- All descriptions, dimensions and distances are approximate, references to state and condition, relevant permissions for use and occupation and other details are provided in good faith and believed to be correct.
- No person in the employment of Monks has any authority to make or give any representation or warranty whatever in relation to this property.
- Electrics and other appliances mentioned in these particulars have not been tested by Monks. Therefore prospective purchasers must satisfy themselves as to their working order.