



**I Vicarage Gardens Claremont Bank,**  
**Shrewsbury, SY1 1RW**  
**£795 PCM**



**monks**  
monks.co.uk



Description

A well-presented two bedroom apartment with parking, situated in the Town Centre. Accommodation briefly comprises: Entrance hallway, open plan living / dining / kitchen, sun room, two double bedrooms, fitted bathroom.

IMPORTANT NOTICE

Information for tenants:

Rent: £795 per calendar month

Deposit: £917 Monks have considered that the deposit for this property is Equivalent to 5 weeks rent

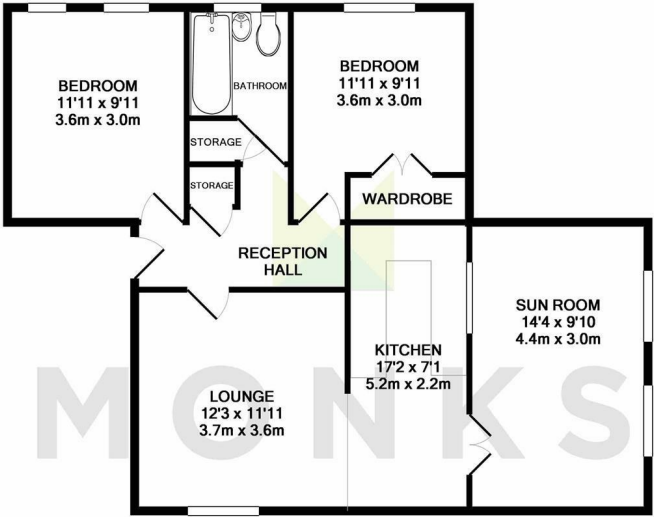
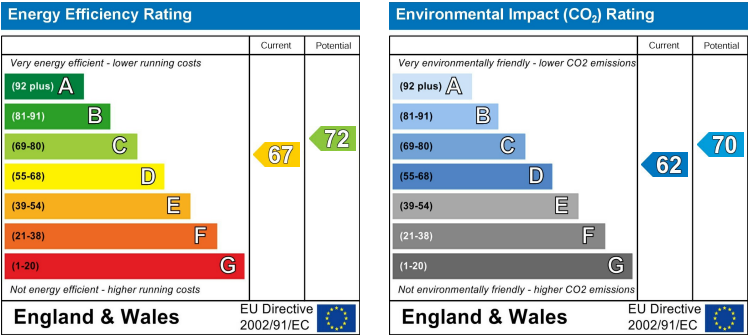
Holding Deposit: £183 Equivalent to 1 Weeks Rent

Council Tax Band: C Please confirm the Council Tax band via Shropshire Council

Term: Assured Shorthold Tenancy for a minimum period of 6 months

Measurements: All measurements are approximate

Services: We are advised that mains water, gas and electric are available



TOTAL APPROX. FLOOR AREA 761 SQ.FT. (70.7 SQ.M.)  
Whilst every attempt has been made to ensure the accuracy of the floor plan contained here, measurements of doors, windows, rooms and any other items are approximate and no responsibility is taken for any error, omission, or mis-statement. This plan is for illustrative purposes only and should be used as such by any prospective purchaser. The services, systems and appliances shown have not been tested and no guarantee as to their operability or efficiency can be given.  
Made with Metropix ©2019

