

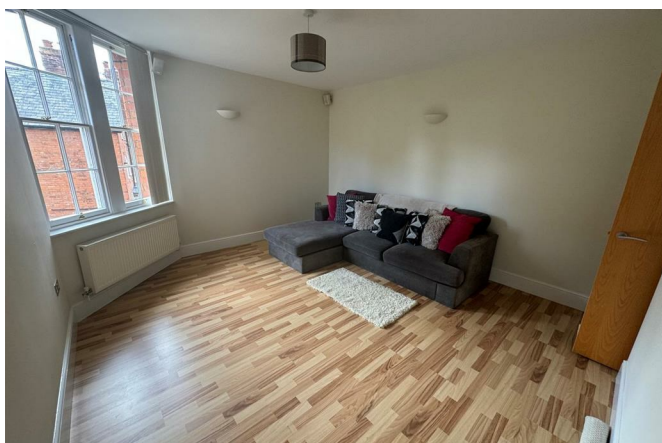
Apartment 5, Holbache House Welsh Oswestry SY11 1AW



1 Bedroom Apartment
£775 PCM

The features

- IMMACULATE FIRST FLOOR APARTMENT
- SECURE COMMUNAL ENTRANCE HALL
- LOUNGE, KITCHEN/BREAKFAST ROOM
- ALLOCATED PARKING
- EPC RATING C
- ENVIABLE LOCATION CLOSE TO TOWN
- PERSONAL RECEPTION HALL
- DOUBLE BEDROOM AND BATHROOM
- VIEWING RECOMMENDED



***** LOVELY FIRST FLOOR APARTMENT *****

A lovely, light and spacious one bedroom apartment with parking situated on the first floor of this period converted home.

Situated in this much sought after location a short stroll from all the Town amenities and offering ease of access to the A5/M54 motorway network.

Secure communal Reception Hall, Lounge, Kitchen/Breakfast Room, double Bedroom and Bathroom.

Viewing recommended.

Property details

ENTRANCE HALL

KITCHEN/BREAKFAST ROOM

RECEPTION ROOM

BEDROOM

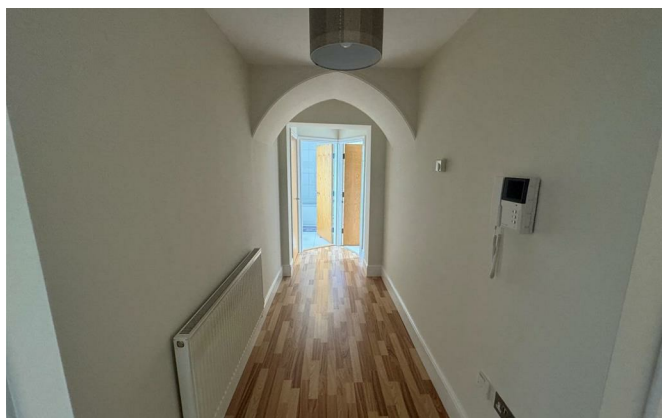
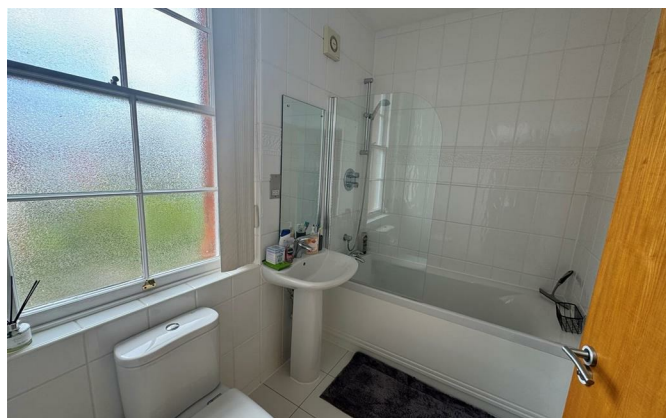
BATHROOM

OUTSIDE

The property benefits from two allocated parking spaces

Apartment 5, Holbache House Welsh Walls, Oswestry, SY11 1AW.

1 Bedroom Apartment
£775 PCM





Judy Bourne

Director at Monks

judy@monks.co.uk

Get in touch

Call. 01743 361422

Email. info@monks.co.uk

Click. www.monks.co.uk

Shrewsbury office

10a-11 Shoplatch,
Shrewsbury, Shropshire, SY1

We're available 7 days a week

HOME – four words that define who,
and what we are:

Honest, Original, Motivated, Empathetic

Energy Efficiency Rating		
	Current	Potential
Very energy efficient - lower running costs		
(92 plus) A		
(81-91) B		
(69-80) C		
(55-68) D		
(39-54) E		
(21-38) F		
(1-20) G		
Not energy efficient - higher running costs		
England & Wales	EU Directive 2002/91/EC	

Environmental Impact (CO ₂) Rating		
	Current	Potential
Very environmentally friendly - lower CO ₂ emissions		
(92 plus) A		
(81-91) B		
(69-80) C		
(55-68) D		
(39-54) E		
(21-38) F		
(1-20) G		
Not environmentally friendly - higher CO ₂ emissions		
England & Wales	EU Directive 2002/91/EC	

Monks for themselves and for the vendors of this property, whose agents they are give notice that:

- These particulars provide a general outline only for the guidance of intended purchasers and do not constitute part of an offer or contract.
- All descriptions, dimensions and distances are approximate, references to state and condition, relevant permissions for use and occupation and other details are provided in good faith and believed to be correct.
- No person in the employment of Monks has any authority to make or give any representation or warranty whatever in relation to this property.
- Electrics and other appliances mentioned in these particulars have not been tested by Monks. Therefore prospective purchasers must satisfy themselves as to their working order.