

Alderton Hall Harmer Hill Shrewsbury SY4 3EL



4 Bedroom House - Detached
£1,950 PCM

The features

- ENTRANCE HALL
- KITCHEN
- UTILITY ROOM AND WC
- 3 FURTHER DOUBLE BEDROOMS
- DRIVEWAY PARKING AND EXTENSIVE GARDENS
- TWO RECEPTION ROOMS
- BOOT ROOM
- PRINCIPAL BEDROOM WITH ENSUITE
- FAMILY BATHROOM
- EPC RATING D



**** A SUPERB 4 BEDROOM DETACHED HOUSE RECENTLY REFURBISHED THROUGHOUT ****

Positioned on a generous plot in this delightful rural location. Accommodation briefly comprises: Entrance hallway, two reception rooms, utility room, boot room, WC, Kitchen, Principal bedroom with dressing area and En Suite, 3 further double bedrooms and family bathroom. Externally the property benefits from ample driveway parking and ample gardens.

Property details

ENTRANCE HALL

With quarry tiled flooring, electric heater

RECEPTION ROOM 1

With quarry tiled flooring, window to front aspect, log burner set in inglenook fireplace

RECEPTION ROOM 2

With quarry tiled flooring, window to front aspect, electric heater

BOOT ROOM

With door to rear leading OUTSIDE, quarry tiled flooring, electric heater

UTILITY ROOM

With quarry tiled flooring, range of shaker style units with round edge work surface over, plumbing for washing machine. sink set in base units, window to side aspect, cupboard housing hot water cylinder

WC

With WC, pedestal wash hand basin, electric heater

KITCHEN

With a range of shaker style units, wood effect work surface over with complimentary tiled splash-backs. Sink and drainer set in base unit, recess of over and hob, plumbing for dishwasher, windows to side aspect, electric heaters

STAIRS AND LANDING

With window to front aspect

BEDROOM 1

With dressing area, velux window to side aspect, radiator

EN SUITE

With 3 piece suite to include; shower cubicle, low level WC, wash hand basin set in vanity unit, electric heater

BEDROOM 2

With window to front aspect, electric heater

BEDROOM 3

With window to front aspect, electric heater

BEDROOM 4

With window to rear aspect, electric heater

FAMILY BATHROOM

With 3 piece suite to include; panelled bath with mixer shower over, low level WC, wash hand basin set in vanity unit, window to side aspect

STORE ROOM

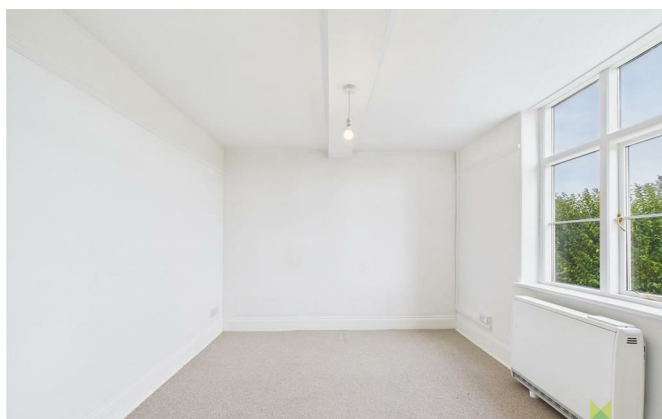
With electric and lighting

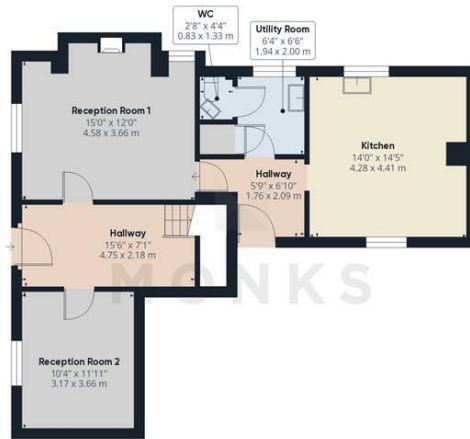
OUTSIDE

Gravelled driveway offering ample parking, extensive wrap around garden mainly laid to lawn

Alderton Hall , Harmer Hill, Shrewsbury, SY4 3EL.

4 Bedroom House - Detached
£1,950 PCM





Floor 0



Floor 1



Approximate total area[®]

1505.98 ft²
139.91 m²

Reduced headroom

33 ft²
3.07 m²

(1) Excluding balconies and terraces

Reduced headroom
..... Below 5 ft/1.5 m

While every attempt has been made to ensure accuracy, all measurements are approximate, not to scale. This floor plan is for illustrative purposes only.

Calculations were based on RICS IPMS 3C standard. Please note that calculations were adjusted by a third party and therefore may not comply with RICS IPMS 3C.

GIRAFFE360



Judy Bourne

Director at Monks

judy@monks.co.uk

Get in touch

Call. 01743 361422

Email. info@monks.co.uk

Click. www.monks.co.uk

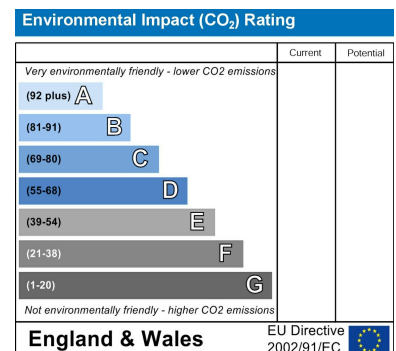
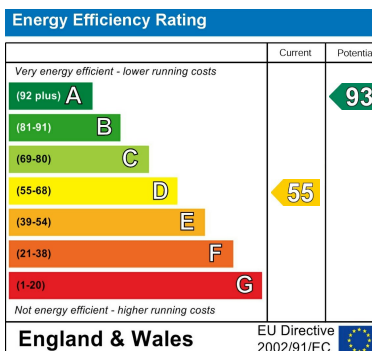
Shrewsbury office

10a-11 Shoplatch,
Shrewsbury, Shropshire, SY1

We're available 7 days a week

HOME – four words that define who,
and what we are:

Honest, Original, Motivated, Empathetic



Monks for themselves and for the vendors of this property, whose agents they are give notice that:

- These particulars provide a general outline only for the guidance of intended purchasers and do not constitute part of an offer or contract.
- All descriptions, dimensions and distances are approximate, references to state and condition, relevant permissions for use and occupation and other details are provided in good faith and believed to be correct.
- No person in the employment of Monks has any authority to make or give any representation or warranty whatever in relation to this property.
- Electrics and other appliances mentioned in these particulars have not been tested by Monks. Therefore prospective purchasers must satisfy themselves as to their working order.