

# 10 Plex Road Hadnall Shrewsbury SY4 3DQ



3 Bedroom House - Semi-Detached  
£1,100 PCM

## The features

- Oil Fired Central Heating
- Kitchen/Breakfast Room
- Living Room
- Bedroom 3/Study
- Extensive Gardens
- Recently Renovated
- Utility Room with WC
- Two Double Bedrooms
- Bathroom With Shower
- EPC Rating C



## **\*\*COMING SOON\*\***

**A stunning, recently renovated 3 bedroom semi-detached house situated in this idyllic rural location on the Sansaw Estate. Having recently undergone extensive renovations this property offers a recently installed kitchen and bathroom with electric shower over bath, living room, two double bedrooms, Bedroom 3/Study and extensive gardens.**

### **Property details**

#### **ENTRANCE HALLWAY**

With radiator, understairs storage cupboard

#### **KITCHEN/BREAKFAST ROOM**

With windows to side aspect and double doors leading to side aspect, newly fitted with shaker style fronted base units with round edge worksurfaces over and tiled splashbacks, Space for electric cooker with extractor hood in place, wood effect flooring, radiator.

#### **UTILITY ROOM**

With wood effect flooring, window to side aspect, low level push flush WC, wall mounted wall basin, plumbing for washing machine with worktop over providing space for a stackable dryer.

#### **LIVING ROOM**

With two windows to front aspect, radiator.

#### **STAIRS AND LANDING**

With radiator, storage cupboard

#### **BEDROOM 1**

With windows to front aspect, radiator

#### **BEDROOM 2**

#### **BATHROOM**

with vinyl flooring, 3 piece white suite to include; pedestal wash hand basin, low level push flush WC, bath with electric shower over, radiator, velux window

#### **BEDROOM 3/ STUDY**

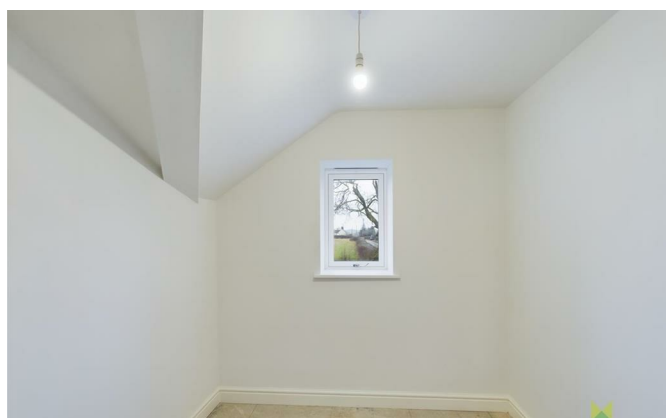
With window to side aspect, radiator

#### **GARDENS AND OUTDOORS**

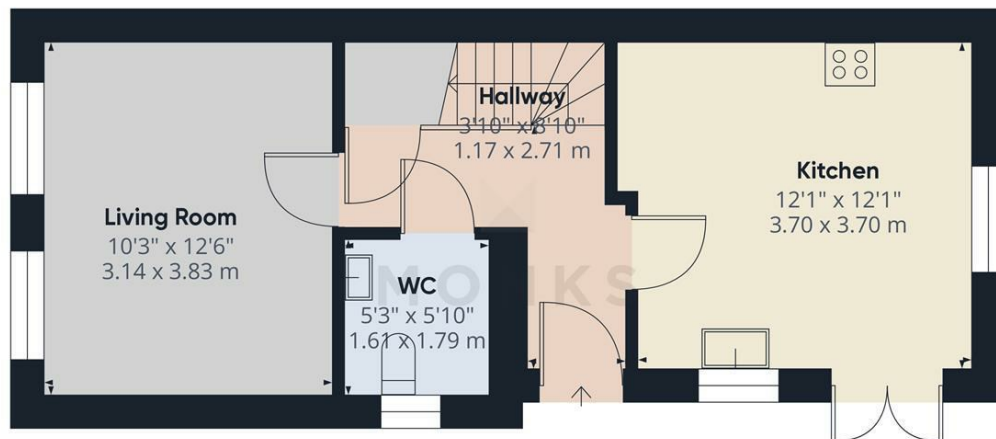
The property is approached over gravel driveway providing parking for several cars. The property is set in lawned garden offering generous space.

## 10 Plex Road, Hadnall, Shrewsbury, SY4 3DQ.

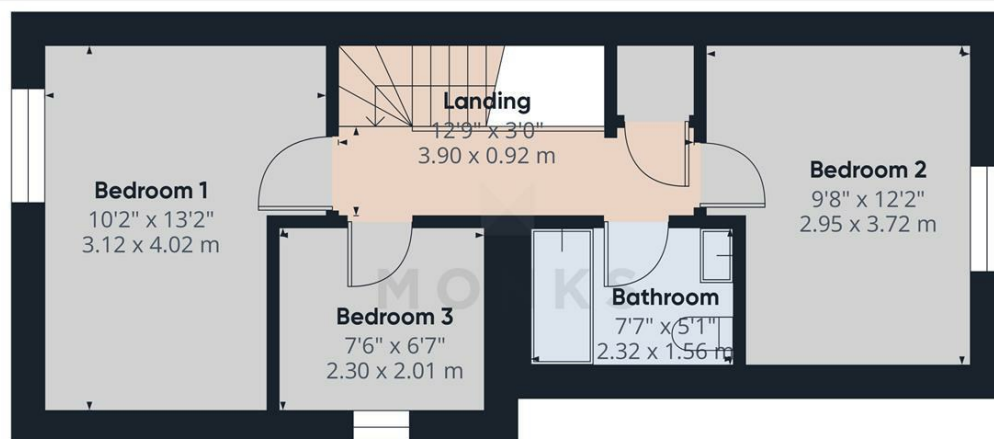
3 Bedroom House - Semi-Detached  
£1,100 PCM







Floor 0



Floor 1



**Approximate total area<sup>(1)</sup>**  
781.14 ft<sup>2</sup>  
72.57 m<sup>2</sup>

(1) Excluding balconies and terraces.

While every attempt has been made to ensure accuracy, all measurements are approximate, not to scale. This floor plan is for illustrative purposes only.

Calculations were based on RICS IPMS 3C standard. Please note that calculations were adjusted by a third party and therefore may not comply with RICS IPMS 3C.

GIRAFFE360



## Judy Bourne

**Director at Monks**

judy@monks.co.uk

## Get in touch

**Call.** 01743 361422

**Email.** info@monks.co.uk

**Click.** www.monks.co.uk

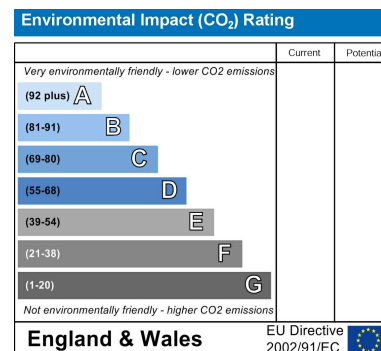
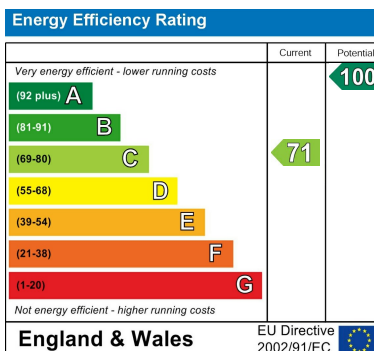
## Shrewsbury office

10a-11 Shoplatch,  
Shrewsbury, Shropshire, SY1

## We're available 7 days a week

HOME – four words that define who,  
and what we are:

**Honest, Original, Motivated, Empathetic**



Monks for themselves and for the vendors of this property, whose agents they are give notice that:

- These particulars provide a general outline only for the guidance of intended purchasers and do not constitute part of an offer or contract.
- All descriptions, dimensions and distances are approximate, references to state and condition, relevant permissions for use and occupation and other details are provided in good faith and believed to be correct.
- No person in the employment of Monks has any authority to make or give any representation or warranty whatever in relation to this property.
- Electricians and other appliances mentioned in these particulars have not been tested by Monks. Therefore prospective purchasers must satisfy themselves as to their working order.