

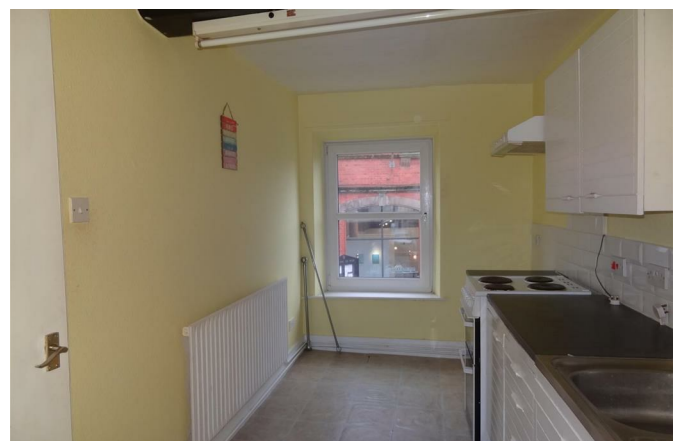
# 33A High Street Wem Shrewsbury SY4 5DG



**1 Bedroom Flat**  
**£495 PCM**

## **The features**

- A one bedroom flat
- Double glazing
- Spacious living room
- Bathroom with shower over bath
- Double bedroom
- Situated in the heart of Wem
- Gas central heating
- Fitted kitchen
- Fitted kitchen with cooker
- EPC Rating C



**A spacious one bedroom flat situated in the heart of Wem. Accommodation briefly comprises: Entrance hallway, living room, kitchen, bathroom and double bedroom**

**Property details**

**ENTRANCE HALLWAY**

With carpeted flooring and radiator

**LIVING ROOM**

With carpeted flooring, radiator, window to front aspect

**BATHROOM**

With vinyl flooring, radiator, frosted window to side. Fitted with suite to include low level WC, wash hand basin and panelled bath with shower over, complimentary tiling to walls.

**BEDROOM**

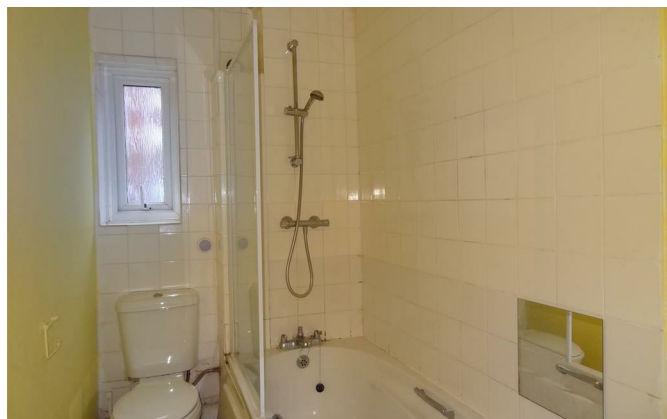
With carpeted flooring, window to side aspect, radiator, built in wardrobe with hanging and shelving space

**KITCHEN**

With vinyl flooring, radiator, fitted with range of wall and base units with round edge worksurfaces over and tiled splashbacks inset stainless steel sink unit, electric cooker. Window to front aspect, wall mounted boiler.

## 33A High Street, Wem, Shrewsbury, SY4 5DG.

1 Bedroom Flat  
£495 PCM





## Judy Bourne

**Director at Monks**

[judy@monks.co.uk](mailto:judy@monks.co.uk)

## Get in touch

**Call.** 01743 361422

**Email.** [info@monks.co.uk](mailto:info@monks.co.uk)

**Click.** [www.monks.co.uk](http://www.monks.co.uk)

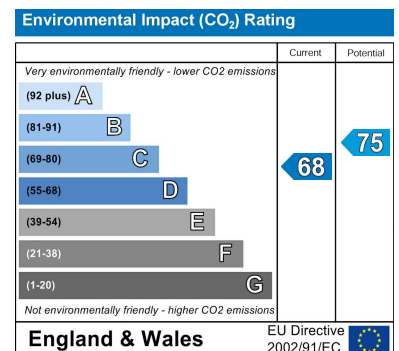
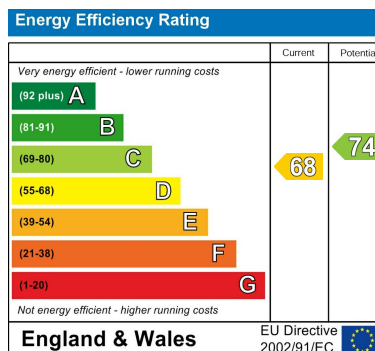
## Shrewsbury office

10a-11 Shoplatch,  
Shrewsbury, Shropshire, SY1

## We're available 7 days a week

HOME – four words that define who,  
and what we are:

**Honest, Original, Motivated, Empathetic**



Monks for themselves and for the vendors of this property, whose agents they are give notice that:

- These particulars provide a general outline only for the guidance of intended purchasers and do not constitute part of an offer or contract.
- All descriptions, dimensions and distances are approximate, references to state and condition, relevant permissions for use and occupation and other details are provided in good faith and believed to be correct.
- No person in the employment of Monks has any authority to make or give any representation or warranty whatever in relation to this property.
- Electrics and other appliances mentioned in these particulars have not been tested by Monks. Therefore prospective purchasers must satisfy themselves as to their working order.