

18 Thornton Road Shrewsbury SY1 3SJ



2 Bedroom House - Semi-Detached
£800 PCM

The features

- TWO BEDROOM SEMI DETACHED HOME
- LIVING ROOM
- TWO DOUBLE BEDROOMS
- ENCLOSED REAR GARDEN
- EPC RATING D
- ENTRANCE HALL
- KITCHEN WITH OVEN AND HOB
- BATHROOM WITH SHOWER OVER BATH
- DRIVEWAY PARKING



****TWO BEDROOM SEMI DETACHED HOME IN A POPULAR RESIDENTIAL LOCATION****

The accommodation briefly comprises; Entrance Hall, Living Room, Kitchen/Breakfast Room, Two Double Bedrooms, Bathroom. Enclosed Rear Garden and Driveway Parking. NEWLY FITTED BATHROOM TO BE COMPLETED PRIOR TO NEW TENANCY COMMENCING.

Property details

ENTRANCE HALL

With carpet, radiator, window to side aspect

LIVING ROOM

With carpet, window to front aspect, gas fire, radiator

KITCHEN/BREAKFAST ROOM

With a range of wood effect units with work surface over, tiled splash backs, sink set into base unit. Oven with gas hob over, recess and plumbing for washing machine. Window to rear aspect, radiator, Door leading to OUTSIDE;

STAIRS AND LANDING

With carpet, window to side aspect

BEDROOM 1

With carpet, windows to front aspect, radiator, storage cupboard housing water tank

BEDROOM 2

With carpet, radiator, window to rear aspect

BATHROOM

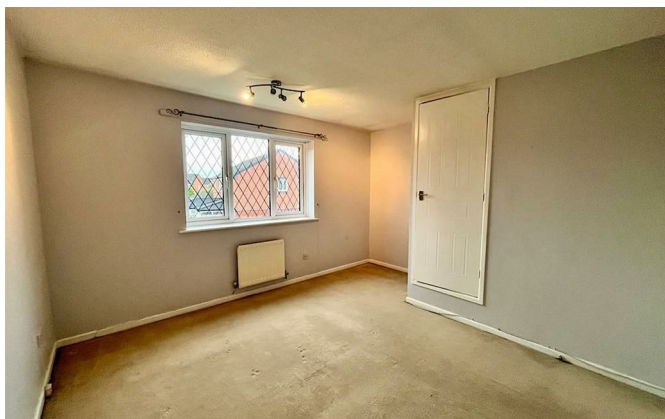
With 3 piece suite comprising; Pedestal wash hand basin, WC, panelled bath with shower over, radiator, obscured window to rear aspect

GARDEN AND OUTSIDE

The property benefits from driveway parking. The rear garden is predominantly laid to lawn with patio area and sheds enclosed with wooden fencing.

18 Thornton Road, Shrewsbury, SY1 3SJ.

2 Bedroom House - Semi-Detached
£800 PCM





Judy Bourne

Director at Monks
judy@monks.co.uk

Get in touch

Call. 01743 361422
Email. info@monks.co.uk
Click. www.monks.co.uk

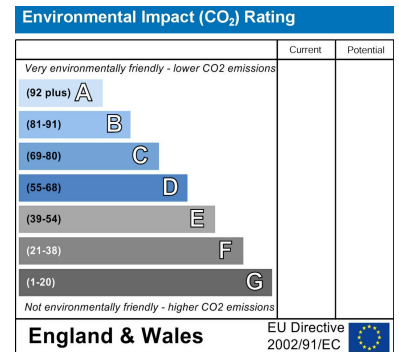
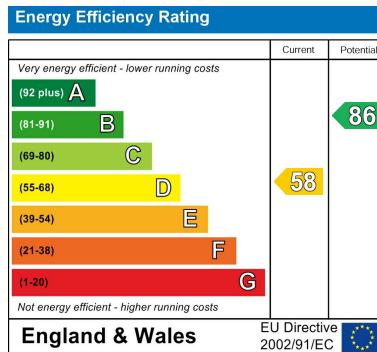
Shrewsbury office

10a-11 Shoplatch,
Shrewsbury, Shropshire, SY1

We're available 7 days a week

HOME – four words that define who,
and what we are:

Honest, Original, Motivated, Empathetic



Monks for themselves and for the vendors of this property, whose agents they are give notice that:

- These particulars provide a general outline only for the guidance of intended purchasers and do not constitute part of an offer or contract.
- All descriptions, dimensions and distances are approximate, references to state and condition, relevant permissions for use and occupation and other details are provided in good faith and believed to be correct.
- No person in the employment of Monks has any authority to make or give any representation or warranty whatever in relation to this property.
- Electricians and other appliances mentioned in these particulars have not been tested by Monks. Therefore prospective purchasers must satisfy themselves as to their working order.