

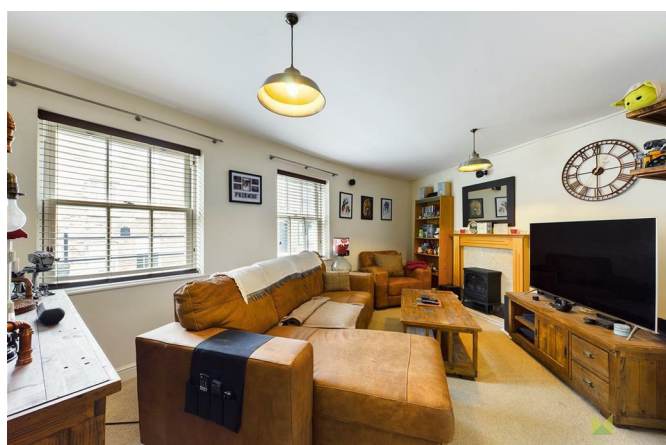
75 St. Julians Crescent Shrewsbury SY1 1UD



3 Bedroom House - Townhouse
£1,100 PCM

The features

- EXCELLENT TOWN HOUSE WITH PARKING
- RECEPTION HALL WITH CLOAKROOM
- GOOD SIZED LOUNGE
- JACK AND JILL BATHROOM
- ALLOCATED PARKING
- GAS CENTRAL HEATING AND DOUBLE GLAZING
- KITCHEN WITH INTERGRATED APPLIANCES
- 3 BEDROOMS
- ENCLOSED COURTYARD GARDEN
- EPC RATING C



***** TOWN HOUSE WITH PARKING *****

An excellent 3 bedroom mews home set on the edge of the Town Centre, between the bridges and with lovely riverside walks. Reception Hall with Cloakroom, good sized Lounge, Kitchen/Breakfast Room, 3 Bedrooms and Jack and Jill Bathroom. Enclosed courtyard Garden and allocated parking. Viewing highly recommended.

Property details

LOCATION

The property occupies an enviable position just over the English Bridge in the Town Centre. Ideally placed for access to all the Town has to offer and a short stroll from restaurants/public houses, the famous Quarry Park and walks along the River Severn. There is ease of access to the A5/M54 motorway network along neighbouring Abbey Foregate.

RECEPTION HALL

Wooden entrance door opens to Reception Hall. Radiator and useful under stairs storage cupboard.

CLOAKROOM

With suite comprising low flush WC and wash hand basin, radiator. Window to the front.

LOUNGE

A lovely light room with two windows to the front, media point, radiator.

KITCHEN/BREAKFAST ROOM

With modern range of units incorporating single drainer sink unit with mixer taps set into base cupboard. Further range of matching cupboards and drawers with inset 4 ring gas fired hob with extractor hood over and oven and grill beneath. Integrated washing machine and space for fridge/freezer. Deep tiled surrounds and matching range of eye level wall units, window and door to courtyard garden. Radiator.

FIRST FLOOR LANDING

Staircase leads from the Reception Hall to First Floor with access to roof space. Airing Cupboard.

PRINCIPAL BEDROOM

With two windows overlooking the front, a quirky irregular shaped room, radiator. Door to

JACK AND JILL BATHROOM

With door to Landing. Suite comprising panelled bath with shower unit over, wash hand basin and WC suite. Complementary tiled surrounds, radiator. Window to the front.

BEDROOM 2

With window to the rear, radiator.

BEDROOM 3

With window to the rear, radiator.

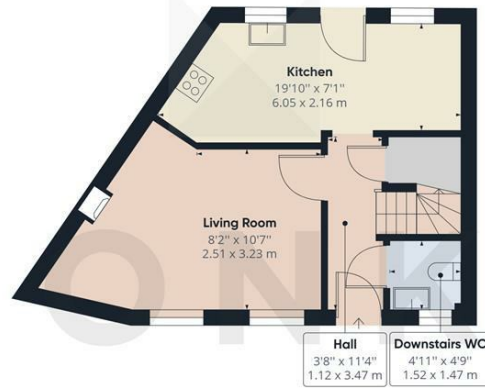
OUTSIDE

To the rear is an enclosed courtyard garden which has been laid for ease of maintenance, enclosed with fencing. Allocated parking within gated car park.

75 St. Julians Crescent, Shrewsbury, SY1 1UD.

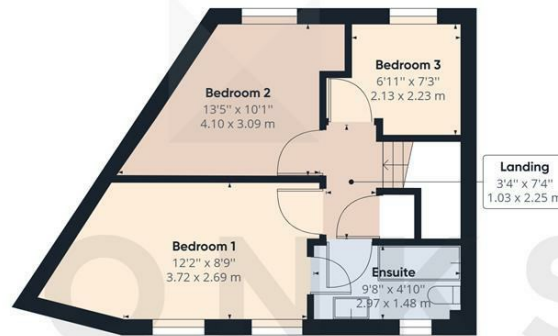
3 Bedroom House - Townhouse
£1,100 PCM





Floor 0 Building 1

Approximate total area⁽¹⁾
803.19 ft²
74.62 m²



Floor 1 Building 1

(1) Excluding balconies and terraces

While every attempt has been made to ensure accuracy, all measurements are approximate, not to scale. This floor plan is for illustrative purposes only.

GIRAFFE360



Judy Bourne

Director at Monks

judy@monks.co.uk

Get in touch

Call. 01743 361422

Email. info@monks.co.uk

Click. www.monks.co.uk

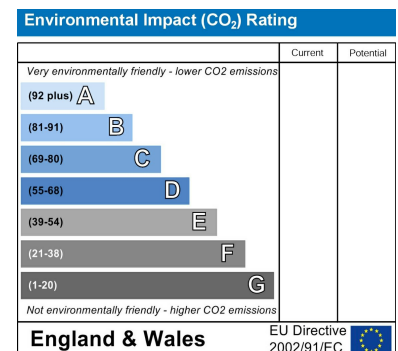
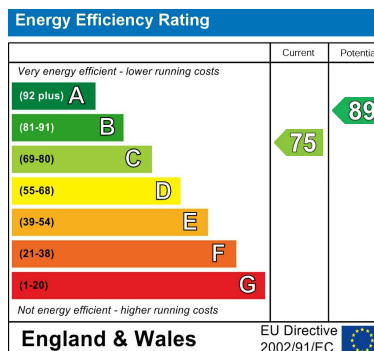
Shrewsbury office

10a-11 Shoplatch,
Shrewsbury, Shropshire, SY1

We're available 7 days a week

HOME – four words that define who,
and what we are:

Honest, Original, Motivated, Empathetic



Monks for themselves and for the vendors of this property, whose agents they are give notice that:

- These particulars provide a general outline only for the guidance of intended purchasers and do not constitute part of an offer or contract.

- All descriptions, dimensions and distances are approximate, references to state and condition, relevant permissions for use and occupation and other details are provided in good faith and believed to be correct.

- No person in the employment of Monks has any authority to make or give any representation or warranty whatever in relation to this property.

- Electricians and other appliances mentioned in these particulars have not been tested by Monks. Therefore prospective purchasers must satisfy themselves as to their working order.