

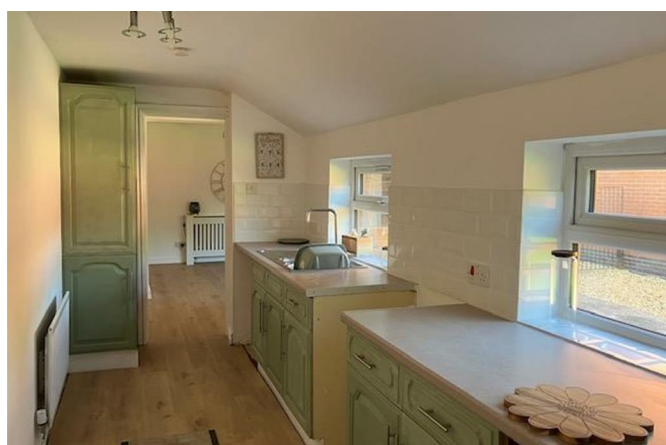
2 Station Road Prees SY13 2DN



2 Bedroom House - Semi-Detached
£725 PCM

The features

- TWO BEDROOM SEMI DETACHED COTTAGE
- TWO RECEPTION ROOMS
- PORCH
- TWO DOUBLE BEDROOMS
- EPC RATING D
- OIL FIRED CENTRAL HEATING
- KITCHEN
- BATHROOM
- ENCLOSED REAR GARDEN AND DRIVEWAY PARKING



A semi-detached two-bedroom cottage located on Station Road in the delightful village of Prees. The accommodation briefly comprises; Two Reception Rooms, Kitchen, Bathroom, to the first floor are Two Bedrooms. Rear Garden and driveway parking for two cars.

Property details

RECEPTION ROOM 1

With carpet, window to rear aspect, radiator

RECEPTION ROOM 2

With carpet, window to front aspect, electric fire, radiator

KITCHEN

With a range of wood units with round edge worksurface over, sink set into base unit, recess for oven and hob. Recess and tumble dryer and plumbing for washing machine, windows to rear aspect

PORCH

With door leading to OUTSIDE, oil boiler

BATHROOM

With 3 piece suite to include; wash hand basin set into vanity unit, WC bath with shower over, obscured window to front aspect, radiator

STAIRS AND LANDING

With carpet, window to side aspect

BEDROOM 1

With carpet, window to front aspect, radiator, storage cupboard providing shelving space

BEDROOM 2

With carpet, window to rear aspect, radiator

OUTSIDE

Driveway parking for two cars. To the rear, gravelled seating area, lawn and AstroTurf area enclosed with wooden fencing.

2 Station Road, Prees, SY13 2DN.

2 Bedroom House - Semi-Detached
£725 PCM





Judy Bourne

Director at Monks
judy@monks.co.uk

Get in touch

Call. 01743 361422
Email. info@monks.co.uk
Click. www.monks.co.uk

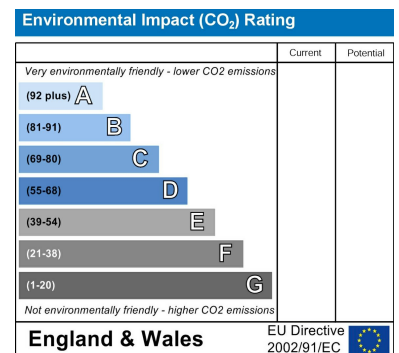
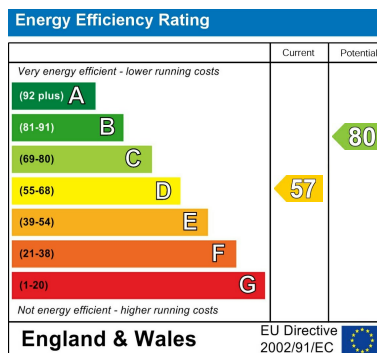
Shrewsbury office

10a-11 Shoplatch,
Shrewsbury, Shropshire, SY1

We're available 7 days a week

HOME – four words that define who,
and what we are:

Honest, Original, Motivated, Empathetic



Monks for themselves and for the vendors of this property, whose agents they are give notice that:

- These particulars provide a general outline only for the guidance of intended purchasers and do not constitute part of an offer or contract.
- All descriptions, dimensions and distances are approximate, references to state and condition, relevant permissions for use and occupation and other details are provided in good faith and believed to be correct.
- No person in the employment of Monks has any authority to make or give any representation or warranty whatever in relation to this property.
- Electricians and other appliances mentioned in these particulars have not been tested by Monks. Therefore prospective purchasers must satisfy themselves as to their working order.