

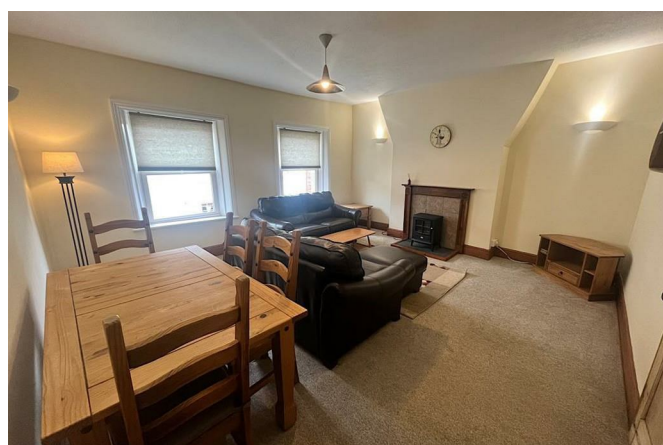
# 15a Church Street Oswestry SY11 2SY



2 Bedroom Apartment  
£725 PCM

## The features

- FURNISHED TWO BEDROOM APARTMENT
- KITCHEN WITH APPLIANCES
- TWO BEDROOMS
- VIEWING ESSENTIAL
- SITUATED IN THE HEART OF OSWESTRY TOWN CENTRE
- SPACIOUS LIVING/DINING ROOM
- BATHROOM WITH SHOWER
- EPC RATING E



## **\*\* A DECEPTIVELY SPACIOUS TWO BEDROOM TOP FLOOR FURNISHED APARTMENT\*\***

**Situated in the heart of Oswestry Town Centre just a stroll to all local amenities. The accommodation briefly comprises: Personal Entrance Hall, Kitchen with stairs leading to raised Seating Area, large Living/Dining Room, Two Bedrooms, Bathroom with Shower.**

### **Property details**

#### **PERSONAL ENTRANCE**

With stairs leading up to HALLWAY with laminate flooring, window to rear aspect, exposed brick wall feature

#### **LIVING/DINING ROOM**

With carpet, windows to front aspect, electric fire, two sofas, coffee table, side table, TV Stand, wooden dining table with 4 chairs

#### **KITCHEN**

With a range of wall and base units with worksurface over, sink and drainer set into base unit, oven with electric hob and cooker hood over, integrated Fridge/Freezer, freestanding washer/dryer

Stairs from Kitchen leading up to SEATING AREA with velux window

#### **LANDING**

With carpet, storage cupboard offering hanging and shelving space, airing cupboard housing water tank, windows to side aspect, electric heater

#### **BEDROOM 1**

With carpets, windows to side and rear aspect, side table, wardrobe offering hanging and shelving space, double bed with mattress, two bedside tables, electric heater

#### **BEDROOM 2**

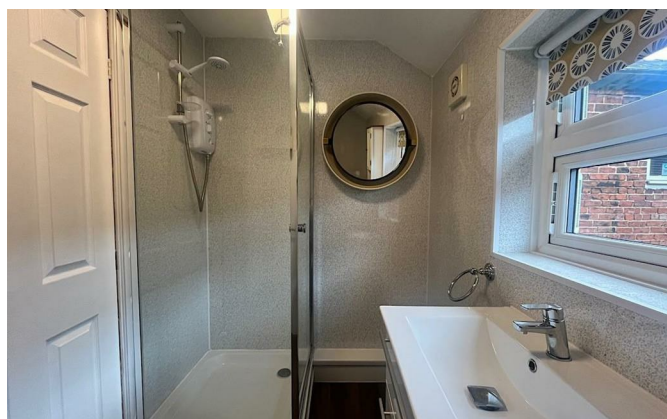
With carpet, window to side aspect, side table, small wardrobe offering hanging and shelving space, single bed and mattress, electric heater

#### **BATHROOM**

With 3 piece suite to include; shower cubicle with electric shower, WC, basin set in vanity unit, window to side aspect, wall mounted heated towel rail

**15a Church Street, Oswestry, SY11 2SY.**

**2 Bedroom Apartment  
£725 PCM**





**Judy Bourne**

**Director at Monks**  
judy@monks.co.uk

**Get in touch**

**Call.** 01743 361422  
**Email.** info@monks.co.uk  
**Click.** www.monks.co.uk

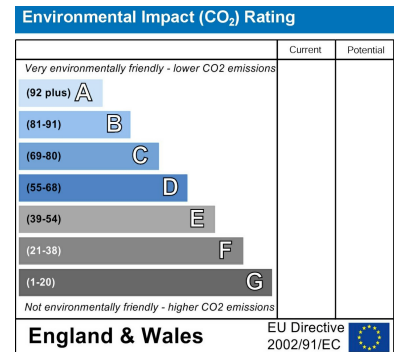
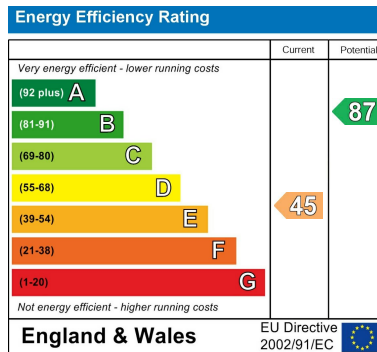
**Shrewsbury office**

10a-11 Shoplatch,  
Shrewsbury, Shropshire, SY1

**We're available 7 days a week**

HOME – four words that define who,  
and what we are:

**Honest, Original, Motivated, Empathetic**



Monks for themselves and for the vendors of this property, whose agents they are give notice that:

- These particulars provide a general outline only for the guidance of intended purchasers and do not constitute part of an offer or contract.
- All descriptions, dimensions and distances are approximate, references to state and condition, relevant permissions for use and occupation and other details are provided in good faith and believed to be correct.
- No person in the employment of Monks has any authority to make or give any representation or warranty whatever in relation to this property.
- Electricians and other appliances mentioned in these particulars have not been tested by Monks. Therefore prospective purchasers must satisfy themselves as to their working order.