

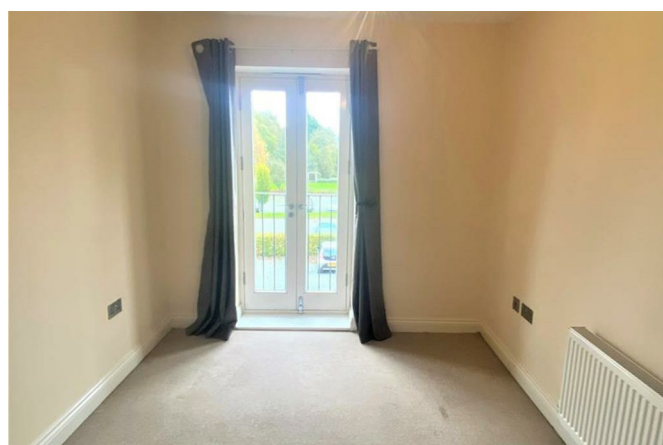
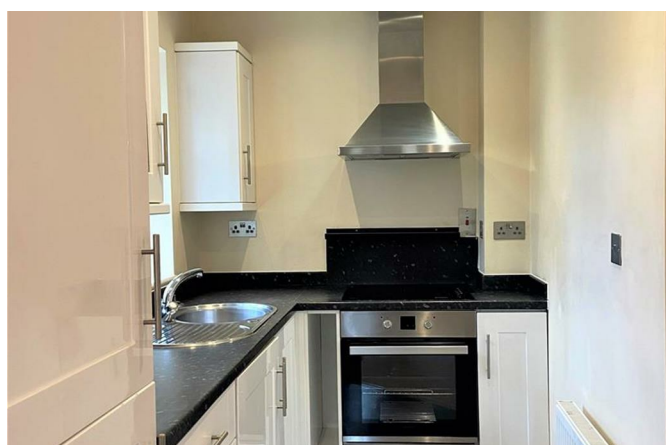
32 Wem Mill Mill Street Wem Shrewsbury SY4 5GB



2 Bedroom Apartment
£650 PCM

The features

- Entrance Hallway
- Living/Dining Room
- Double Bedroom
- Parking
- EPC Rating C
- Kitchen with appliances
- Bathroom
- Single Bedroom
- Viewing Essential



This two bedroom first floor apartment is situated in the this select gated development is situated on the outskirts of Wem bordering the River Roden. Accommodation briefly comprises: Entrance hallway, open plan living / dining / kitchen, two bedrooms, bathroom, parking.

Property details

With secure communal entrance to apartment, wooden door to:

ENTRANCE HALLWAY

With carpet, intercom telephone, radiator

KITCHEN

With vinyl flooring, fitted with range of white high gloss shaker style base units with black worksurfaces over continuing to splashback, inset stainless steel sink unit, built in electric oven and hob with extractor over, integrated fridge, freezer and washing machine.

LIVING/DINING ROOM

With carpeted , double doors with Juliette balcony and window to front aspect, radiator

BEDROOM 1

With carpet, double door with Juliette balcony to rear aspect, radiator

BEDROOM 2

With carpet, window to rear aspect, radiator

BATHROOM

With vinyl flooring, fitted with white suite to include low level WC, pedestal wash hand basin and panelled bath with shower over. Walls partly tiled, radiator.

32 Wem Mill Mill Street, Wem, Shrewsbury, SY4 5GB.

2 Bedroom Apartment
£650 PCM





Judy Bourne

Director at Monks
judy@monks.co.uk

Get in touch

Call. 01743 361422
Email. info@monks.co.uk
Click. www.monks.co.uk

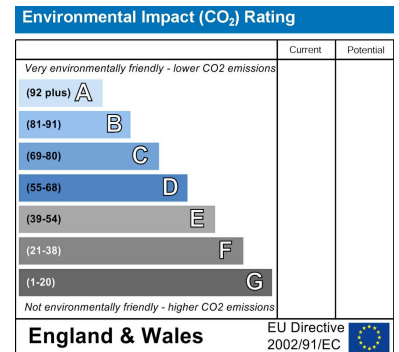
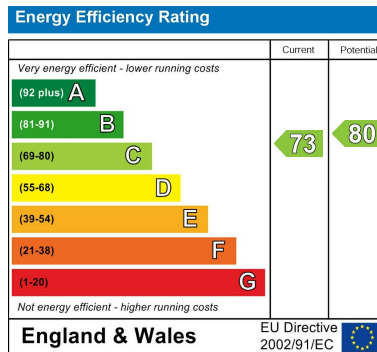
Shrewsbury office

10a-11 Shoplatch,
Shrewsbury, Shropshire, SY1

We're available 7 days a week

HOME – four words that define who,
and what we are:

Honest, Original, Motivated, Empathetic



Monks for themselves and for the vendors of this property, whose agents they are give notice that:

- These particulars provide a general outline only for the guidance of intended purchasers and do not constitute part of an offer or contract.
- All descriptions, dimensions and distances are approximate, references to state and condition, relevant permissions for use and occupation and other details are provided in good faith and believed to be correct.
- No person in the employment of Monks has any authority to make or give any representation or warranty whatever in relation to this property.
- Electricians and other appliances mentioned in these particulars have not been tested by Monks. Therefore prospective purchasers must satisfy themselves as to their working order.