



Meadow Rise, ##Invalid offers in excess of £210,000

- Spacious reception room
- Proximity to public transport
- Local amenities nearby
- Vicinity of green spaces
- Comfort and convenience blend
- Ideal for family living
- EPC Rating: C



 4  1  2



About the property

Presenting a splendid semi-detached property that is currently up for sale. This delightful home boasts of four well-proportioned bedrooms, making it an ideal residential spot for families. The property also features a single, well-appointed bathroom that caters to the needs of all the residents.

The semi-detached property comprises one spacious reception room, perfect for family gatherings or simply unwinding during evenings. Furthermore, the property has a beautifully designed kitchen, offering the perfect space for culinary exploration and family meals.

Location is one of the key aspects of this property. It is conveniently located with easy access to public transport links, ensuring smooth and hassle-free commutes. Families with school-going children will appreciate the property's proximity to nearby schools. The location also boasts of local amenities, meeting your day-to-day needs effortlessly. For those who appreciate the outdoors, the vicinity of green spaces offers a breath of fresh air and ample opportunities for leisurely walks and recreational activities.

This semi-detached house, with its ample space and strategic location, is certainly an excellent choice for families looking for a blend of comfort and convenience. Don't miss the opportunity to make this your new



Accommodation

Lounge

14' 10" max x 10' 8" max (4.52m max x 3.25m max)

Dining Room

10' max x 7' 4" max (3.05m max x 2.24m max)

Bedroom 1

10' 10" x 7' 5" (3.30m x 2.26m)

Bedroom 2

Bedroom 3

12' 6" x 7' 5" (3.81m x 2.26m)

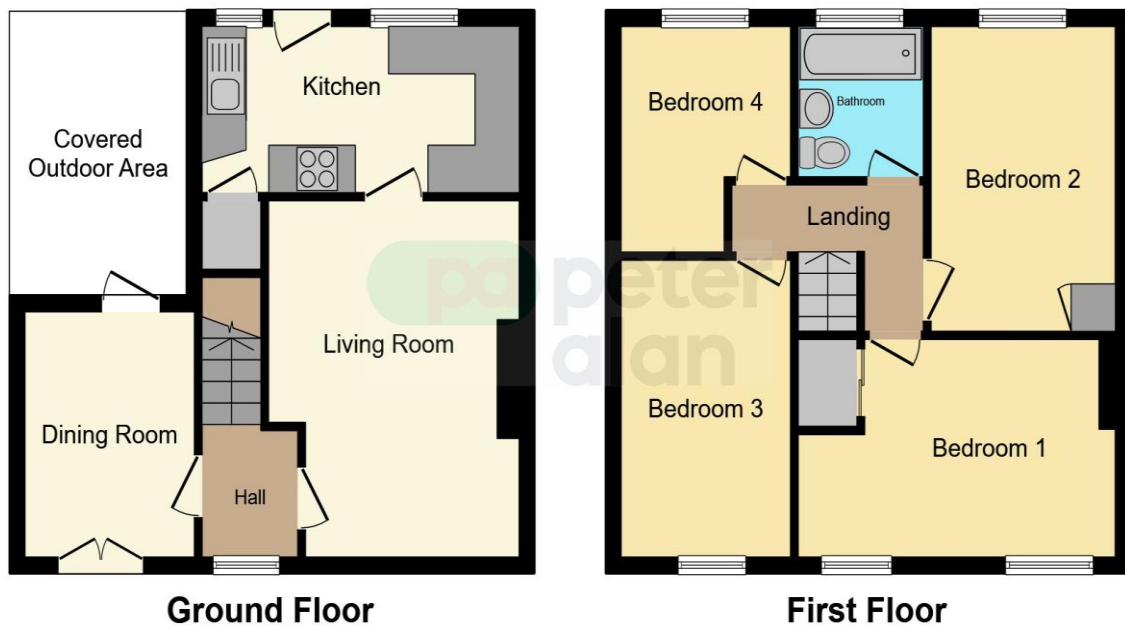
Bedroom 4

12' 8" x 8' 2" (3.86m x 2.49m)

01443 222851

talbotgreen@peteralan.co.uk

Floorplan



This floor plan is for illustrative purposes only. It is not drawn to scale. Any measurements, floor areas (including any total floor area), openings and orientation are approximate. No details are guaranteed, they cannot be relied upon for any purpose and they do not form part of any agreement. No liability is taken for any error, omission or misstatement. A party must rely upon its own inspection(s). Powered by www.focalagent.com



Important Information

Note while we endeavour to make our sales details accurate and reliable, if there is any point which is of particular interest to you, please contact the office and we will be pleased to confirm the position for you. We have not personally tested any apparatus, equipment, fixtures, fittings or services and cannot verify they are in working order or fit for their purposes. Nothing in these particulars is intended to indicate that carpets or curtains, furnishings or fittings, electrical goods (whether wired or not). Gas fires or light fittings or any other fixtures not expressly included form part of the property offered for sale. This computer generated Floorplan, if applicable, is intended as a general guide to the layout and design of the property. It is not to scale and should not be relied upon for dimensions. Tenure: We cannot confirm the tenure of the property as we have not had access to the legal documents. The buyer is advised to obtain verification from their solicitor or surveyor.

Peter Alan Limited is registered in England and Wales under company number 2073153, Registered Office is Cumbria House, 16-20 Hockliffe Street, Leighton Buzzard, Bedfordshire, LU7 1GN. VAT Registration Number is 500 2481 05. For activities relating to regulated mortgages and non-investment insurance contracts, Peter Alan Limited is an appointed representative of Connells Limited which is authorised and regulated by the Financial Conduct Authority. Connells Limited's Financial Services Register number is 302221. Most buy-to-let