



Beech Wood Drive, £340,000

- Four Bedrooms
- Detached
- Driveway and Garage
- En-Suite to Master Bedroom
- EPC Rating: C
- Council Tax: E
- EPC Rating: C



 4  1  1



About the property

Set in a quiet cul-de-sac location in the sought after Mountain View development in Tonyrefail is this four bedroom detached family home. This property is just a short drive to Talbot Green retail park which offers a number of high street shops and restaurants and the M4 corridor is also just a short drive further. The property offers four generously sized bedrooms and benefits from off road parking and a garage.

Viewings are highly recommended to appreciate the size of this home.



Accommodation

Entrance Hallway

Stairs to first floor, three storage cupboards and doors to kitchen/Diner and Lounge.

Living Room

Upvc double glazed window to front and french doors to rear, radiator.

Kitchen/Dining Room

Upvc double glazed window to front and french doors to rear, radiators, door to utility room, fitted kitchen with wall and base units, built in oven and hob, stainless steel sink unit with mixer tap, space for fridge/freezer.

Utility Room

Double glazed door to rear, wall and base units, Stainless Steel sink unit with mixer tap, space for washing machine, door to under stairs cupboard

Landing

Doors to bedrooms, airing cupboard and bathroom.

Bedroom One

Upvc double glazed window to front and side, radiator, door to en-suite

Ensuite

Upvc double glazed window to side, radiator, W.C, pedestal wash hand basin and shower cubicle

Bedroom Two

Upvc double glazed window to front, radiator

Bedroom Three

Upvc double glazed window to front, radiator, storage cupboard.

Bedroom Four

Upvc double glazed window to rear, radiator.

Bathroom

Upvc double glazed window to rear, radiator, shower cubicle, W.C, pedestal wash hand basin, panelled bath.

Outside

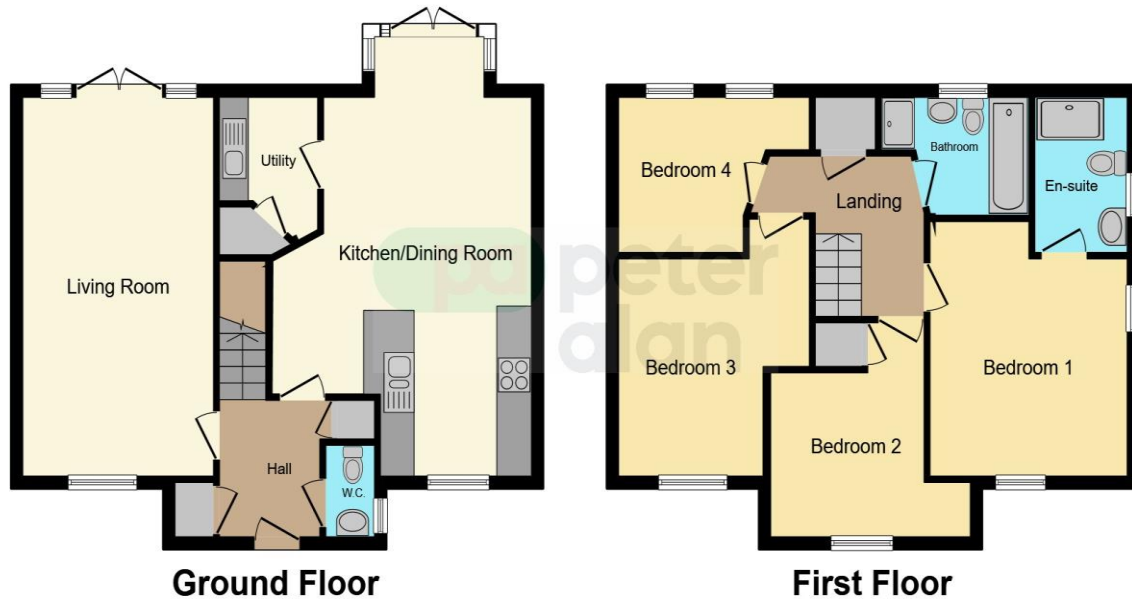
Front Garden

Garden laid to lawn, steps leading to front door, driveway to the side leading to a single garage.

Rear Garden

Enclosed rear garden laid to paved patio and steps leading up to garden area laid to lawn, gated side access.

Floorplan



This floorplan is for illustrative purposes only and is not drawn to scale. Measurements, floor-areas, openings and orientations are approximate. They should not be relied upon for any purpose and do not form any part of an agreement. No liability is taken for any error or mis-statement. All parties must rely on their own inspections.

Important Information

Note while we endeavour to make our sales details accurate and reliable, if there is any point which is of particular interest to you, please contact the office and we will be pleased to confirm the position for you. We have not personally tested any apparatus, equipment, fixtures, fittings or services and cannot verify they are in working order or fit for their purposes. Nothing in these particulars is intended to indicate that carpets or curtains, furnishings or fittings, electrical goods (whether wired or not). Gas fires or light fittings or any other fixtures not expressly included form part of the property offered for sale. This computer generated Floorplan, if applicable, is intended as a general guide to the layout and design of the property. It is not to scale and should not be relied upon for dimensions. Tenure: We cannot confirm the tenure of the property as we have not had access to the legal documents. The buyer is advised to obtain verification from their solicitor or surveyor.

Peter Alan Limited is registered in England and Wales under company number 2073153, Registered Office is Cumbria House, 16-20 Hockliffe Street, Leighton Buzzard, Bedfordshire, LU7 1GN. VAT Registration Number is 500 2481 05. For activities relating to regulated mortgages and non-investment insurance contracts, Peter Alan Limited is an appointed representative of Connells Limited which is authorised and regulated by the Financial Conduct Authority. Connells Limited's Financial Services Register number is 302221. Most buy-to-let