



Landmark Place offers in excess of £130,000

- REFURBISHED
- ONE BEDROOM
- CITY CENTRE
- SOUGHT AFTER COMPLEX
- CURRENTLY TENANTED
- NO ONWARD SALE CHAIN
- EPC Rating: C





About the property

RECENTLY REFURBISHED one bedroom apartment offered to the market with no chain. Located in the highly SOUGHT after Landmark Place complex, directly in the middle of the CITY CENTRE. A stone's throw from Queens Street train station. CONCIERGE reception. No onward sale chain.

Accommodation

Ground Floor

The apartment is approached from the main ground floor reception concierge. The apartment has video operated security entranced telecom door entry systems, wide stairwells and an operational lift to all floors through various cores. Through private entrance door to:

Kitchen/diner/lounge

21' 2" x 10' 4" (6.45m x 3.15m)

The kitchen area has been re-fitted with a matching base and eye level units with worktop space over, sink with single drainer and mixer tap, integrated fridge/freezer and washing machine, built-in electric fan assisted oven, built-in four ring electric hob with hood over, tiled flooring, recessed ceiling spotlights. The lounge has laminate flooring, good size area for sofa and table, window to rear.



Bedroom

12' 10" x 9' 4" (3.91m x 2.84m)

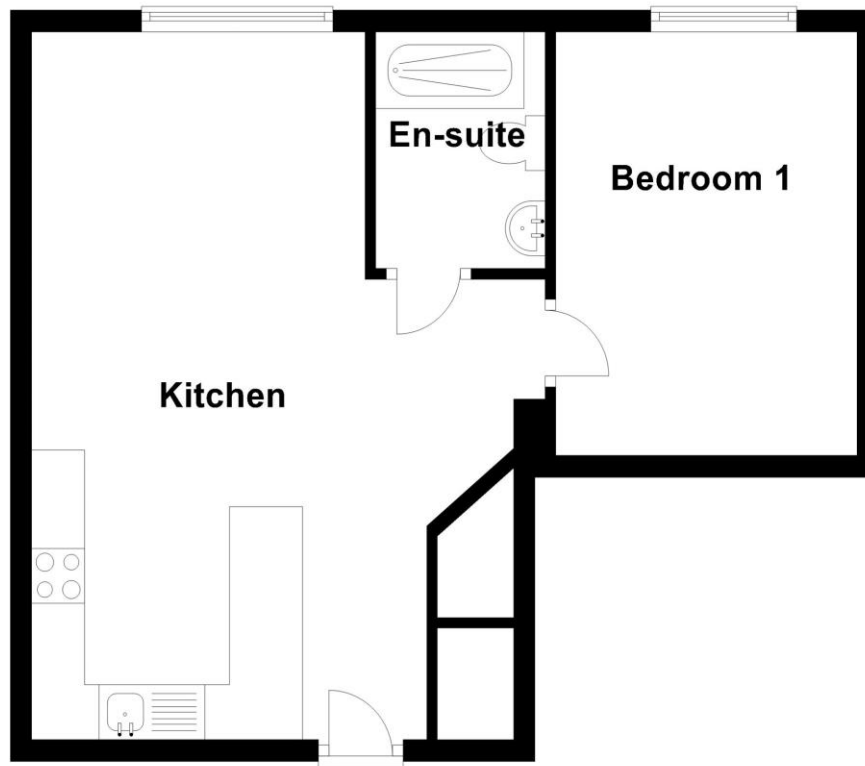
Fitted carpet, electric heater, window to rear.

Shower Room

Fitted with a three piece suite comprising shower cubicle, wash hand basin with storage under, low-level WC and full height tiling to all walls, heated towel rail, extractor fan, wall mounted mirror, tiled flooring.

Floorplan

Tenth Floor



Important Information

Note while we endeavour to make our sales details accurate and reliable, if there is any point which is of particular interest to you, please contact the office and we will be pleased to confirm the position for you. We have not personally tested any apparatus, equipment, fixtures, fittings or services and cannot verify they are in working order or fit for their purposes. Nothing in these particulars is intended to indicate that carpets or curtains, furnishings or fittings, electrical goods (whether wired or not). Gas fires or light fittings or any other fixtures not expressly included form part of the property offered for sale. This computer generated Floorplan, if applicable, is intended as a general guide to the layout and design of the property. It is not to scale and should not be relied upon for dimensions. Tenure: We cannot confirm the tenure of the property as we have not had access to the legal documents. The buyer is advised to obtain verification from their solicitor or surveyor.

Peter Alan Limited is registered in England and Wales under company number 2073153, Registered Office is Cumbria House, 16-20 Hockliffe Street, Leighton Buzzard, Bedfordshire, LU7 1GN. VAT Registration Number is 500 2481 05. For activities relating to regulated mortgages and non-investment insurance contracts, Peter Alan Limited is an appointed representative of Connells Limited which is authorised and regulated by the Financial Conduct Authority. Connells Limited's Financial Services Register number is 302221. Most buy-to-let