



## Carisbrooke Way, £390,000

- SOUGHT AFTER AREA & GREAT PLOT
- THREE RECEPTION AREAS & CONSERVATORY
- DOWNSTAIRS TOILET
- Council Tax E
- EPC Rating: C



 3  1  3





## About the property

Immaculately presented three double bedroom family home in SOUGHT AFTER area and great garden. CALL NOW OR MISS THIS OPPORTUNITY

## Accommodation

### Porch

With double glazed entrance door, tiled flooring, obscure window to side, door to:

### Hallway

Laminate wood flooring, radiator, door to cloakroom, kitchen, family room, lounge and dining with stairs leading upwards.

### Lounge

14' max x 11' max ( 4.27m max x 3.35m max )





## Dining Room

11' 1" x 11' 1" ( 3.38m x 3.38m )

## Conservatory

11' 2" x 7' 10" ( 3.40m x 2.39m )

Double glazed construction with vent windows and French doors opening onto the patio leading to the garden.

## Kitchen

7' 6" x 12' 3" ( 2.29m x 3.73m )

Fitted with matching base and eye level units with worktop space over and under unit lights, 1 1/2 half stainless steel sink

and drainer with mixer tap. Integrated slimline dishwasher, room for washing machine and fridge, built-in four ring gas cooker with hood over and built-in oven with hide & slide door, window to rear, double radiator, door to side

## Cloakroom

Fitted with a two piece suite comprising low level wc and wash hand basin with tiled splashback, window to side and laminate flooring.

## Family Room

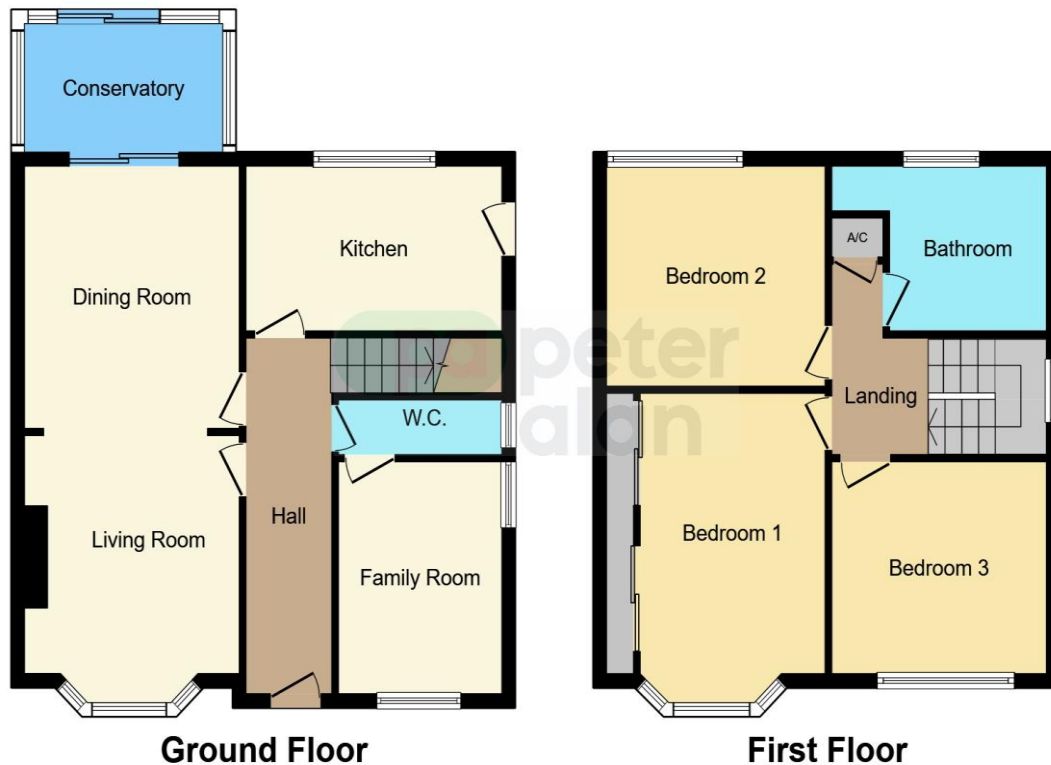
7' 6" x 12' 3" ( 2.29m x 3.73m )

Currently utilised as an office, laminate flooring, radiator, window to front & side

02920 462246

albanyroad@peteralan.co.uk

## Floorplan



This floorplan is for illustrative purposes only and is not drawn to scale. Measurements, floor-areas, openings and orientations are approximate. They should not be relied upon for any purpose and do not form any part of an agreement. No liability is taken for any error or mis-statement. All parties must rely on their own inspections.

## Important Information

Note while we endeavour to make our sales details accurate and reliable, if there is any point which is of particular interest to you, please contact the office and we will be pleased to confirm the position for you. We have not personally tested any apparatus, equipment, fixtures, fittings or services and cannot verify they are in working order or fit for their purposes. Nothing in these particulars is intended to indicate that carpets or curtains, furnishings or fittings, electrical goods (whether wired or not). Gas fires or light fittings or any other fixtures not expressly included form part of the property offered for sale. This computer generated Floorplan, if applicable, is intended as a general guide to the layout and design of the property. It is not to scale and should not be relied upon for dimensions. Tenure: We cannot confirm the tenure of the property as we have not had access to the legal documents. The buyer is advised to obtain verification from their solicitor or surveyor.

Peter Alan Limited is registered in England and Wales under company number 2073153, Registered Office is Cumbria House, 16-20 Hockliffe Street, Leighton Buzzard, Bedfordshire, LU7 1GN. VAT Registration Number is 500 2481 05. For activities relating to regulated mortgages and non-investment insurance contracts, Peter Alan Limited is an appointed representative of Connells Limited which is authorised and regulated by the Financial Conduct Authority. Connells Limited's Financial Services Register number is 302221. Most buy-to-let