



Sunnyside Road, offers in the region of £220,000

- Close Distance To Bridgend Town Centre
- Beautifully renovated Throughout
- Being Sold With no Ongoing Chain
- Council Tax Band C
- Viewing Highly recommended
- EPC Rating: C



2 1 1



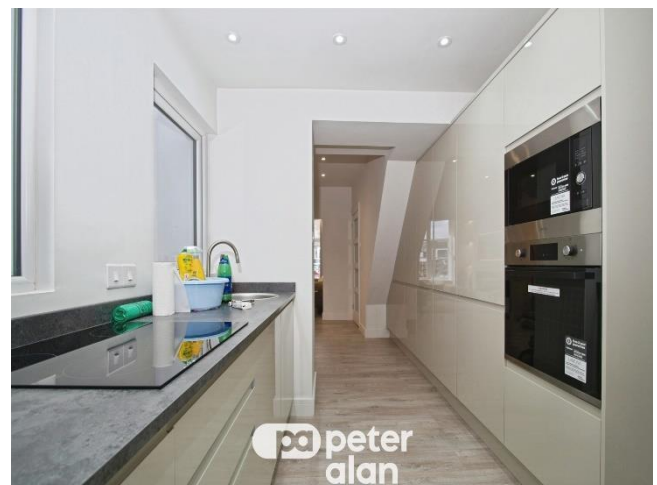
About the property

A beautifully presented and thoughtfully renovated two-bedroom, mid-terrace, bay-fronted property ideally located within close proximity to Bridgend Town Centre and offered for sale with no ongoing chain. This charming home has been lovingly restored and finished to a high standard throughout, blending character with modern living.

The ground floor accommodation comprises two well-proportioned reception rooms, one of which offers excellent flexibility and could be utilised as an additional ground-floor bedroom if required. There is also a bright and contemporary kitchen to the rear, complemented by two useful utility spaces and a downstairs cloakroom, providing practical and versatile living.

To the first floor are two generous double bedrooms along with a stylish and modern four-piece family bathroom filled with natural light. Externally, the property benefits from a low-maintenance rear garden with rear access and potential to create off-road parking, subject to the necessary planning consents.

Viewing is highly recommended to fully appreciate the exceptional finish, space, and versatility this beautiful home has to offer.





Accommodation

Entrance Hall

Front Reception Room

11' 7" x 9' 10" plus bay (3.53m x 3.00m plus bay)

Rear Reception Room

13' 1" max x 11' 1" max (3.99m max x 3.38m max)

Kitchen

10' x 8' 3" (3.05m x 2.51m)

Rear Hallway

W.C.

Utility

6' 3" x 5' 3" (1.91m x 1.60m)

Utility

6' 9" x 6' 8" (2.06m x 2.03m)

First Floor

Landing

Bedroom One

14' 4" x 10' 2" (4.37m x 3.10m)

Bedroom Two

11' 2" x 8' 2" (3.40m x 2.49m)

Bathroom

01656 657201

bridgend@peteralan.co.uk



Floorplan



Total floor area 89.0 m² (958 sq.ft.) approx

This floor plan is for illustrative purposes only. It is not drawn to scale. Any measurements, floor areas (including any total floor area), openings and orientation are approximate. No details are guaranteed, they cannot be relied upon for any purpose and they do not form part of any agreement. No liability is taken for any error, omission or misstatement. A party must rely upon its own inspection(s). Powered by www.propertybox.io



Important Information

Note while we endeavour to make our sales details accurate and reliable, if there is any point which is of particular interest to you, please contact the office and we will be pleased to confirm the position for you. We have not personally tested any apparatus, equipment, fixtures, fittings or services and cannot verify they are in working order or fit for their purposes. Nothing in these particulars is intended to indicate that carpets or curtains, furnishings or fittings, electrical goods (whether wired or not). Gas fires or light fittings or any other fixtures not expressly included form part of the property offered for sale. This computer generated Floorplan, if applicable, is intended as a general guide to the layout and design of the property. It is not to scale and should not be relied upon for dimensions. Tenure: We cannot confirm the tenure of the property as we have not had access to the legal documents. The buyer is advised to obtain verification from their solicitor or surveyor.

Peter Alan Limited is registered in England and Wales under company number 2073153, Registered Office is Cumbria House, 16-20 Hockliffe Street, Leighton Buzzard, Bedfordshire, LU7 1GN. VAT Registration Number is 500 2481 05. For activities relating to regulated mortgages and non-investment insurance contracts, Peter Alan Limited is an appointed representative of Connells Limited which is authorised and regulated by the Financial Conduct Authority. Connells Limited's Financial Services Register number is 302221. Most buy-to-let

