



## Clos Yr Eyr, offers over £360,000

- Detached Family Home with Garage with Off Street Parking
- Ensuite to master and downstairs cloakroom
- Open Plan Kitchen/Dining Room
- Council Tax Band E
- Landscaped rear Garden
- EPC Rating: B



 4  2  2





## About the property

A well-presented and spacious four-bedroom detached family home, ideally located within the highly sought-after development of Park Derwen, Bridgend. This attractive double-fronted property offers generous and versatile accommodation, making it an excellent choice for growing families.

The home is set back with a detached garage and driveway providing ample off-road parking, while to the rear lies a generous and well-maintained garden, perfect for outdoor entertaining, family time, or relaxing in a private setting.

Internally, the property is thoughtfully laid out with bright and spacious rooms throughout, offering both comfort and practicality. The accommodation flows well and is complemented by the home's well-presented condition, allowing purchasers to move in with minimal fuss.

Situated in a popular residential area, Park Derwen is conveniently positioned for local amenities, reputable schools, and transport links, making this an ideal location for family living.

Viewing is highly recommended to fully appreciate the space, presentation, and desirable location this impressive home has to offer.

**\*\*MORE IMAGES COMING SOON\*\***

# Images Coming Soon...



## Accommodation

### Entrance Hall

**Lounge** - 20' 5" plus bay x 10' 8" ( 6.22m plus bay x 3.2

**Kitchen/Diner** - 23' 9" x 9' 8" ( 7.24m x 2.95m )

### Cloakroom

### First Floor

### Landing

**Bedroom One** - 11' plus door recess x 10' 7" ( 3.35m |  
recess x 3.23m )

### En-Suite

**Bedroom Two** 11' x 9' 6" ( 3.35m x 2.90m )

**Bedroom Three** - 9' 9" plus door recess x 9' 8" ( 2.97m  
recess x 2.95m )

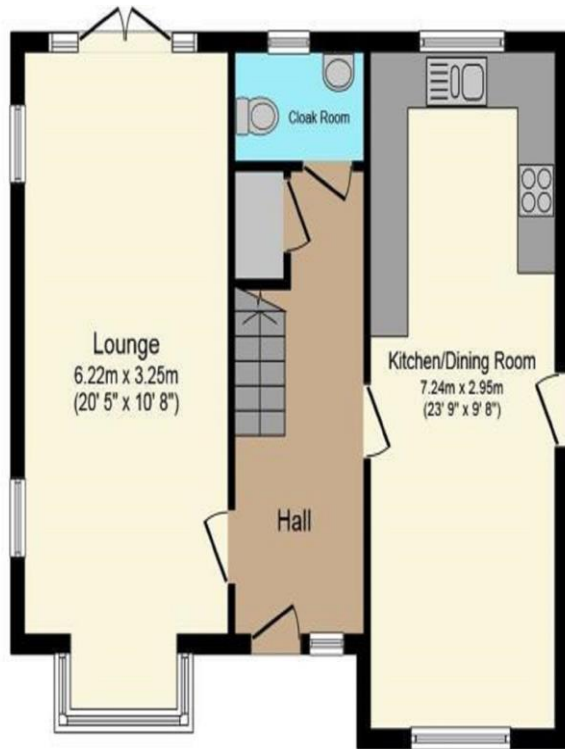
**Bedroom Four** - 9' 8" x 7' ( 2.95m x 2.13m )

### Bathroom

01656 657201

bridgend@peteralan.co.uk

## Floorplan



Ground Floor



First Floor

## Important Information

Note while we endeavour to make our sales details accurate and reliable, if there is any point which is of particular interest to you, please contact the office and we will be pleased to confirm the position for you. We have not personally tested any apparatus, equipment, fixtures, fittings or services and cannot verify they are in working order or fit for their purposes. Nothing in these particulars is intended to indicate that carpets or curtains, furnishings or fittings, electrical goods (whether wired or not). Gas fires or light fittings or any other fixtures not expressly included form part of the property offered for sale. This computer generated Floorplan, if applicable, is intended as a general guide to the layout and design of the property. It is not to scale and should not be relied upon for dimensions. Tenure: We cannot confirm the tenure of the property as we have not had access to the legal documents. The buyer is advised to obtain verification from their solicitor or surveyor.

Peter Alan Limited is registered in England and Wales under company number 2073153, Registered Office is Cumbria House, 16-20 Hockliffe Street, Leighton Buzzard, Bedfordshire, LU7 1GN. VAT Registration Number is 500 2481 05. For activities relating to regulated mortgages and non-investment insurance contracts, Peter Alan Limited is an appointed representative of Connells Limited which is authorised and regulated by the Financial Conduct Authority. Connells Limited's Financial Services Register number is 302221. Most buy-to-let

**pa** peter  
alan