



Glan-Y-Nant

offers in excess of £290,000

- Detached four-bedroom family home with no ongoing chain
- Spacious lounge with garden access
- Integral garage with conversion potential
- Council Tax Band E
- Close proximity to local schools, shops and transport links
- EPC Rating: B



 4
  2
  2



About the property

Nestled in a quiet cul-de-sac in the desirable area of Glan-Y-Nant, Tondu, this well-presented four-bedroom detached home is perfect for families seeking a peaceful yet convenient location.

The ground floor welcomes you with a bright entrance hallway leading to a cloakroom, a spacious lounge with direct access to the beautifully maintained, enclosed rear garden, and a separate dining room that opens seamlessly into a modern kitchen. An integral garage provides excellent storage or offers potential for conversion, adding even more versatility to the property.

Upstairs, the property features four generously sized bedrooms, including a master with en-suite, and a family bathroom to complete the accommodation.

Externally, the home benefits from off-road parking for several vehicles at the front, solar panels enhancing energy efficiency, and a private rear garden, thoughtfully designed and well-maintained for outdoor enjoyment with the added bonus of a garden workshop.



Accommodation

Entrance Hall

Cloakroom

Lounge

14' 4" x 11' 1" (4.37m x 3.38m)

Kitchen

7' 7" x 13' (2.31m x 3.96m)

Dining Room

7' 11" x 9' 1" (2.41m x 2.77m)

First Floor

Landing

Bedroom One

11' 3" max plus wardrobe recess x 8' 8" max plus wardrobe recess (3.43m max plus wardrobe recess x 2.64m max plus wardrobe recess)

En-Suite

Bedroom Two

10' 8" x 9' 1" (3.25m x 2.77m)

Bedroom Three

9' 5" max x 6' 11" max (2.87m max x 2.11m max)

Bedroom Four

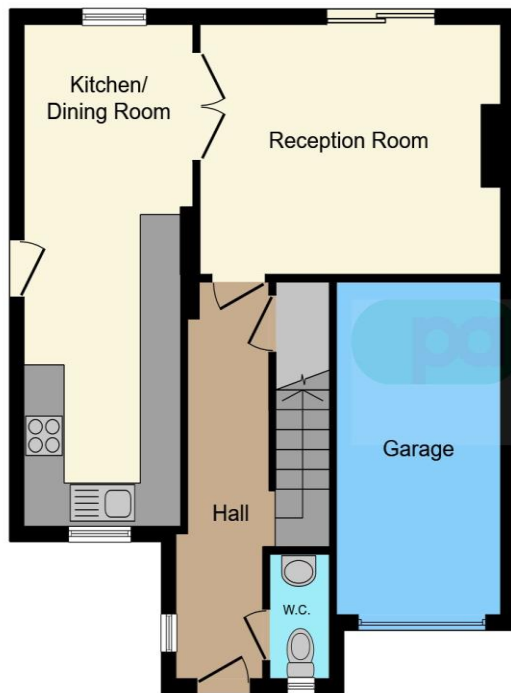
8' 8" x 8' 2" plus wardrobe recess (2.64m x 2.49m plus wardrobe recess)

Bathroom

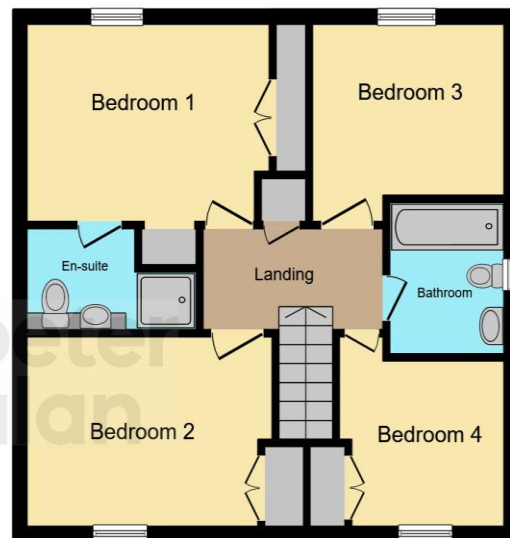
01656 657201

bridgend@peteralan.co.uk

Floorplan



Ground Floor



First Floor

This floor plan is for illustrative purposes only. It is not drawn to scale. Any measurements, floor areas (including any total floor area), openings and orientation are approximate. No details are guaranteed, they cannot be relied upon for any purpose and they do not form part of any agreement. No liability is taken for any error, omission or misstatement. A party must rely upon its own inspection(s). Powered by www.focalagent.com



Important Information

Note while we endeavour to make our sales details accurate and reliable, if there is any point which is of particular interest to you, please contact the office and we will be pleased to confirm the position for you. We have not personally tested any apparatus, equipment, fixtures, fittings or services and cannot verify they are in working order or fit for their purposes. Nothing in these particulars is intended to indicate that carpets or curtains, furnishings or fittings, electrical goods (whether wired or not). Gas fires or light fittings or any other fixtures not expressly included form part of the property offered for sale. This computer generated Floorplan, if applicable, is intended as a general guide to the layout and design of the property. It is not to scale and should not be relied upon for dimensions. Tenure: We cannot confirm the tenure of the property as we have not had access to the legal documents. The buyer is advised to obtain verification from their solicitor or surveyor.

Peter Alan Limited is registered in England and Wales under company number 2073153, Registered Office is Cumbria House, 16-20 Hockliffe Street, Leighton Buzzard, Bedfordshire, LU7 1GN. VAT Registration Number is 500 2481 05. For activities relating to regulated mortgages and non-investment insurance contracts, Peter Alan Limited is an appointed representative of Connells Limited which is authorised and regulated by the Financial Conduct Authority. Connells Limited's Financial Services Register number is 302221. Most buy-to-let