



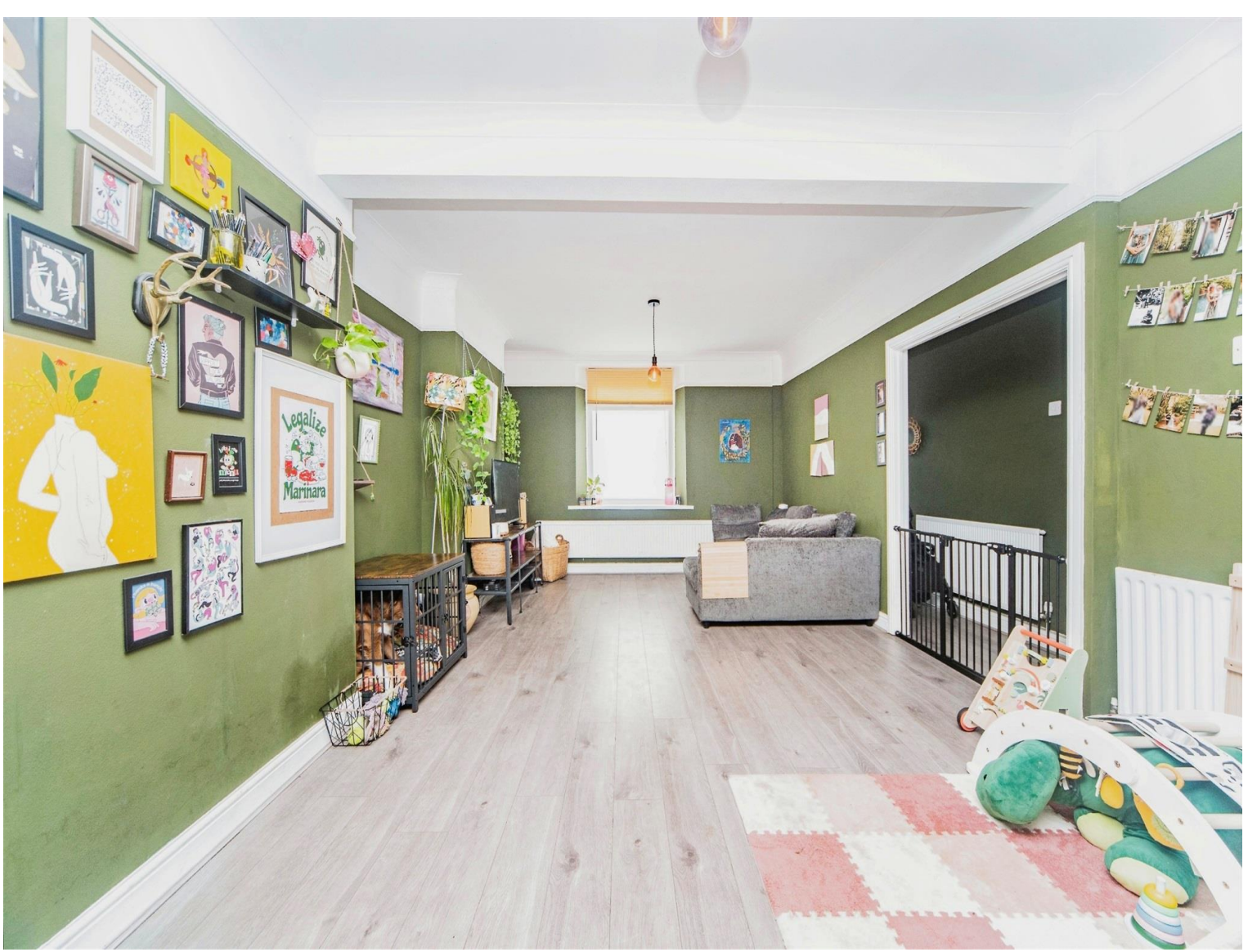
## Mackworth Street, offers over £170,000

- 3 Bedroom Mid-terraced
- Beautifully presented
- Walking distance to Bridgend Town Centre
- Council Tax - Band C
- Viewing highly recommended
- EPC Rating: D



 3  1  1





## About the property

Welcome to this beautifully presented three-bedroom mid-terrace home, ideally situated within walking distance of Bridgend Town Centre. Perfect for first-time buyers or savvy buy-to-let investors, this charming property boasts a spacious and inviting layout.

As you step inside, you'll find a large, bright living room, perfect for relaxing or entertaining guests. The modern kitchen diner at the rear of the property is a true highlight, featuring sleek finishes and ample space for dining. French doors open out to a generously sized rear garden, offering an ideal space for outdoor activities and summer barbecues.

The first floor comprises three well-proportioned bedrooms, each offering comfort and style. The family bathroom is modern and well-appointed, catering to all your needs.

Conveniently located, this property provides easy access to the M4 motorway, making commutes a breeze. Local shops, schools, and amenities are all within close reach, ensuring a lifestyle of convenience and ease.

With its excellent location and beautifully maintained interiors, this property is a must-see. Early viewing is highly recommended to fully appreciate all it has to offer. Don't miss out on the opportunity to make this wonderful house your new home

Please note: Currently the Vendors details do not match the registered title at Land Registry. Please ask the branch for more details.





## Accommodation

**Entrance Hall**

**Living Room** - 12' 5" x 20' 7" ( 3.78m x 6.27m )

**Kitchen/Diner** - 15' 7" x 10' 5" ( 4.75m x 3.17m )

**First Floor**

**Landing**

**Bedroom One** - 16' 1" x 9' 8" ( 4.90m x 2.95m )

**Bedroom Two** - 10' 2" x 10' 5" ( 3.10m x 3.17m )

**Bedroom Three** - 9' 5" x 5' 6" ( 2.87m x 1.68m )

**Bathroom**

01656 657201

bridgend@peteralan.co.uk

## Floorplan



This floor plan is for illustrative purposes only. It is not drawn to scale. Any measurements, floor areas (including any total floor area), openings and orientation are approximate. No details are guaranteed, they cannot be relied upon for any purpose and they do not form part of any agreement. No liability is taken for any error, omission or misstatement. A party must rely upon its own inspection(s). Powered by [www.focalagent.com](http://www.focalagent.com)

## Important Information

Note while we endeavour to make our sales details accurate and reliable, if there is any point which is of particular interest to you, please contact the office and we will be pleased to confirm the position for you. We have not personally tested any apparatus, equipment, fixtures, fittings or services and cannot verify they are in working order or fit for their purposes. Nothing in these particulars is intended to indicate that carpets or curtains, furnishings or fittings, electrical goods (whether wired or not). Gas fires or light fittings or any other fixtures not expressly included form part of the property offered for sale. This computer generated Floorplan, if applicable, is intended as a general guide to the layout and design of the property. It is not to scale and should not be relied upon for dimensions. Tenure: We cannot confirm the tenure of the property as we have not had access to the legal documents. The buyer is advised to obtain verification from their solicitor or surveyor.

Peter Alan Limited is registered in England and Wales under company number 2073153, Registered Office is Cumbria House, 16-20 Hockliffe Street, Leighton Buzzard, Bedfordshire, LU7 1GN. VAT Registration Number is 500 2481 05. For activities relating to regulated mortgages and non-investment insurance contracts, Peter Alan Limited is an appointed representative of Connells Limited which is authorised and regulated by the Financial Conduct Authority. Connells Limited's Financial Services Register number is 302221. Most buy-to-let

