



Abernethy Quay, Maritime Quarter SA1 1UF

- EPC Rating: C
- Two Bedroom apartment
- Views of Swansea Marina
- Balcony Overlooking The Marina
- Sold With No Chain





About The Property

Sold with a tenant in Situ! A top floor 2 bedroom apartment boasting views over Swansea Marina and Swansea City centre. The property comprises of two double bedrooms, family bathroom, lounge views over the Maritime Quarter and access to a balcony and a kitchen.

Accommodation

Entrance Hall

Laminate flooring. Two radiators. Loft hatch. Airing cupboard housing water tank.

Lounge

10' 6" x 13' 6" (3.20m x 4.11m)

Sliding door leading to a large glass covered corner balcony with views over Swansea Marina and window to side. Laminate flooring. Radiator.

Kitchen

9' 2" x 9' 8" (2.79m x 2.95m)

Fitted with matching wall and base units with work preparation surfaces over. Oven with 4 ring hob and hood over. Plumbed for a washing machine. Wall mounted boiler. Radiator. Tiled splashback. Window to side.

Bathroom

Fitted with a three piece suite including a bath with shower over, WC and pedestal wash hand basin. Radiator. Window to side.

Peter Alan - Swansea

01792 641481
swansea@peteralan.co.uk
peteralan.co.uk



Bedroom One

12' 6" Max x 16' 2" (3.81m Max x 4.93m)
Two windows to front. Radiator. Carpeted.

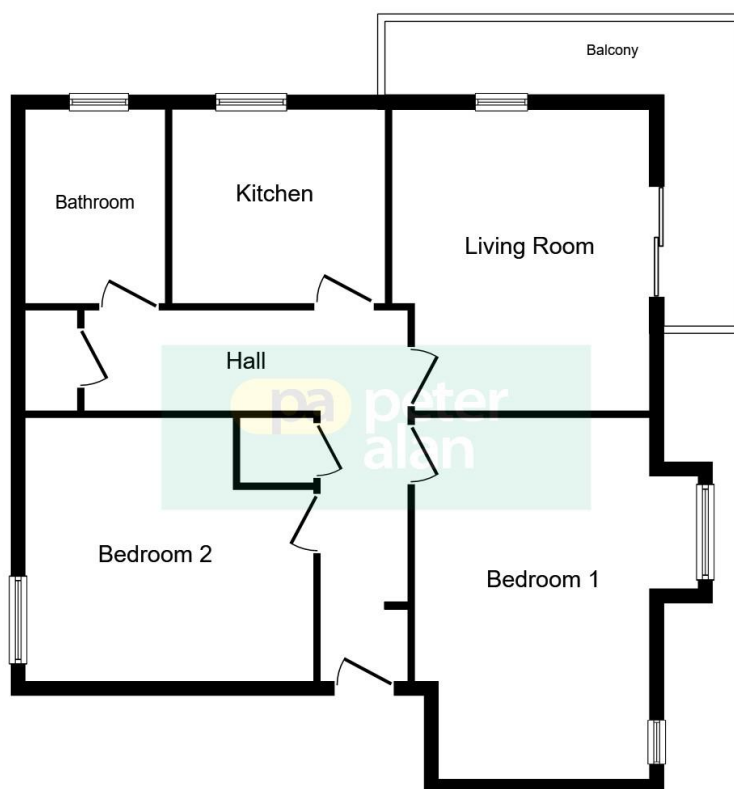
Bedroom Two

11' 9" x 12' 2" (3.58m x 3.71m)

Window to rear. Carpeted. Radiator.

External

One allocated parking space.



Floor Plan

This plan is for illustration purposes only and may not be representative of the property. Plan not to scale.

Powered by audioagent.com

Important Information

Note while we endeavour to make our sales details accurate and reliable, if there is any point which is of particular interest to you, please contact the office and we will be pleased to confirm the position for you. We have not personally tested any apparatus, equipment, fixtures, fittings or services and cannot verify they are in working order or fit for their purposes. Nothing in these particulars is intended to indicate that carpets or curtains, furnishings or fittings, electrical goods (whether wired or not). Gas fires or light fittings or any other fixtures not expressly included form part of the property offered for sale. This computer generated Floorplan, if applicable, is intended as a general guide to the layout and design of the property. It is not to scale and should not be relied upon for dimensions. Tenure: We cannot confirm the tenure of the property as we have not had access to the legal documents. The buyer is advised to obtain verification from their solicitor or surveyor.

Lease details are currently being compiled. For further information please contact the branch. Please note additional fees could be incurred for items such as leasehold packs.