



## Grenfell Town, offers over £90,000

- No Chain
- Ideal First Time Buy
- Close To Local Amenities
- Council Tax Band - A
- Two Bedrooms
- EPC Rating: D



 2  1  2





## About the property

Available with no chain is this generous sized property and an ideal first time or investment opportunity offered for sale. Situated within close proximity to local shops, schools, public transport links, retail parks, M4 corridor and Swansea City Centre. The generous accommodation briefly comprises: entrance hallway, 2 reception rooms, kitchen and bathroom to the ground floor. On the first floor there are two generous bedrooms. To the outside there is a fully enclosed rear garden. Please call Peter Alan Swansea on 01792 641481 to arrange a viewing or book 24/7 on our website.

## Accommodation

### Ground Floor

#### Entrance Hall

#### Lounge

10' 3" max x 10' 7" max ( 3.12m max x 3.23m max )

#### Dining Room

14' 6" max x 10' 3" ( 4.42m max x 3.12m )

#### Kitchen

10' 3" x 6' 5" ( 3.12m x 1.96m )



**First Floor**

**Landing**

**Bedroom 1**

15' 3" max x 9' 3" max ( 4.65m max x 2.82m max )

**Bedroom 2**

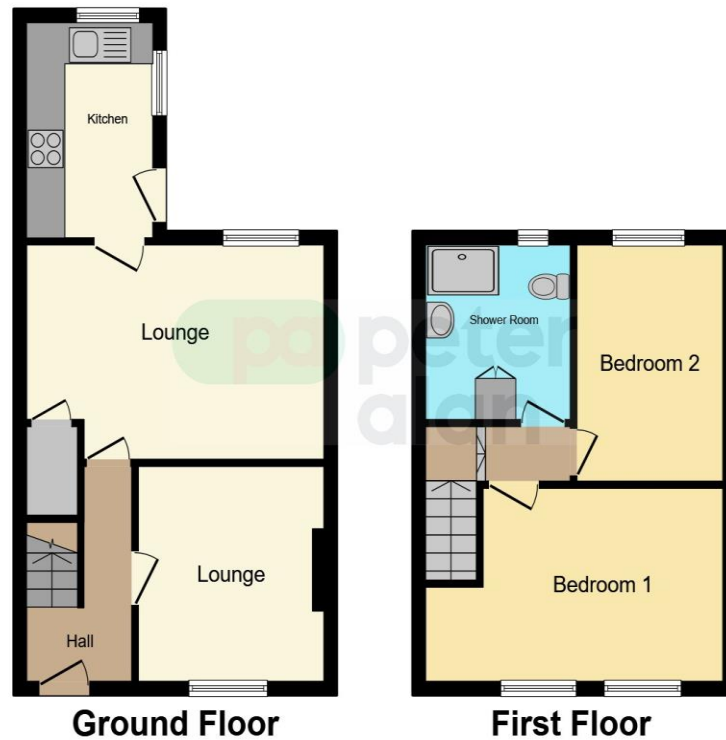
11' 3" x 7' 5" ( 3.43m x 2.26m )

**Shower Room**

**Outside**

**Rear Garden**

## Floorplan



This floor plan is for illustrative purposes only. It is not drawn to scale. Any measurements, floor areas (including any total floor area), openings and orientation are approximate. No details are guaranteed, they cannot be relied upon for any purpose and they do not form part of any agreement. No liability is taken for any error, omission or misstatement. A party must rely upon its own inspection(s). Powered by [www.focalagent.com](http://www.focalagent.com)

## Important Information

Note while we endeavour to make our sales details accurate and reliable, if there is any point which is of particular interest to you, please contact the office and we will be pleased to confirm the position for you. We have not personally tested any apparatus, equipment, fixtures, fittings or services and cannot verify they are in working order or fit for their purposes. Nothing in these particulars is intended to indicate that carpets or curtains, furnishings or fittings, electrical goods (whether wired or not). Gas fires or light fittings or any other fixtures not expressly included form part of the property offered for sale. This computer generated Floorplan, if applicable, is intended as a general guide to the layout and design of the property. It is not to scale and should not be relied upon for dimensions. Tenure: We cannot confirm the tenure of the property as we have not had access to the legal documents. The buyer is advised to obtain verification from their solicitor or surveyor.

Peter Alan Limited is registered in England and Wales under company number 2073153, Registered Office is Cumbria House, 16-20 Hockliffe Street, Leighton Buzzard, Bedfordshire, LU7 1GN. VAT Registration Number is 500 2481 05. For activities relating to regulated mortgages and non-investment insurance contracts, Peter Alan Limited is an appointed representative of Connells Limited which is authorised and regulated by the Financial Conduct Authority. Connells Limited's Financial Services Register number is 302221. Most buy-to-let