



## Conway Road, £130,000

- Three Bedrooms
- Semi Detached
- Great Location
- No Onward Chain
- Spacious Living Room
- Excellent Transport Links
- EPC Rating: Awaited



 3  1  1





## About the property

Situated on the ever-popular Conway Road, Pentwyn Crumlin, this three-bedroom semi-detached property presents a fantastic opportunity for a wide range of buyers, including first-time purchasers, growing families, and investors alike.

Offered to the market with no onward chain, the property allows for a smooth and straightforward purchase. The accommodation is well-proportioned throughout and offers excellent potential for modernisation or improvement, enabling the new owner to add value and personalise the home to their own taste.

The ground floor typically comprises a welcoming entrance hallway, a spacious living room with plenty of natural light, and a kitchen with scope to be updated or reconfigured to suit contemporary living. Upstairs, the property benefits from three generously sized bedrooms, providing flexible living space for families or those requiring a home office, along with a family bathroom.



## Accommodation

**Porch**

**Hall**

**Living Room/Dining Room**

**Kitchen**

**Ground Floor Wc/Cloak Room**

**Stairs To First Floor**

**Bedroom One**

**Bedroom Two**

**Bedroom Three**

**Bathroom**

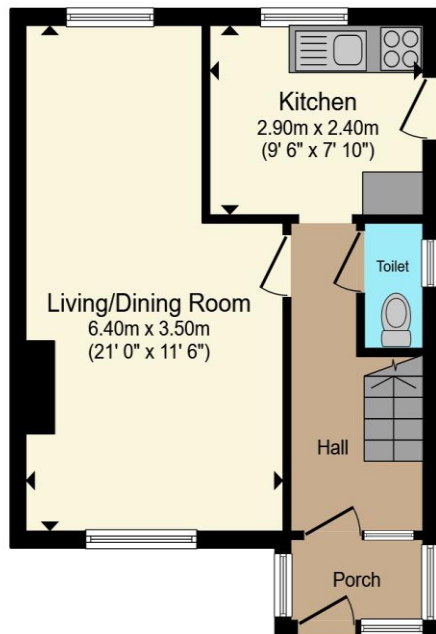
**Outside**



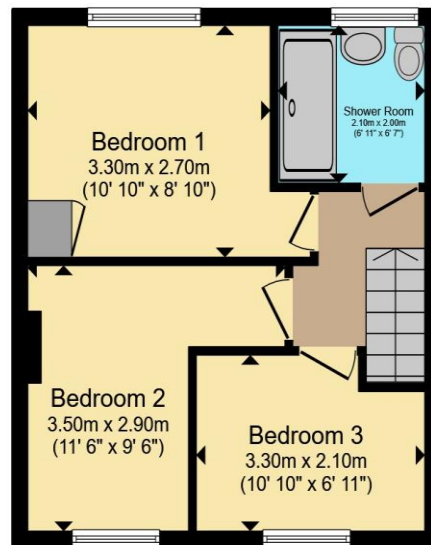
01495 231199

blackwood@peteralan.co.uk

## Floorplan



**Ground Floor**



**First Floor**

Total floor area 71.1 m<sup>2</sup> (766 sq.ft.) approx

This floor plan is for illustrative purposes only. It is not drawn to scale. Any measurements, floor areas (including any total floor area), openings and orientation are approximate. No details are guaranteed, they cannot be relied upon for any purpose and they do not form part of any agreement. No liability is taken for any error, omission or misstatement. A party must rely upon its own inspection(s). Powered by [www.propertybox.io](http://www.propertybox.io)



## Important Information

Note while we endeavour to make our sales details accurate and reliable, if there is any point which is of particular interest to you, please contact the office and we will be pleased to confirm the position for you. We have not personally tested any apparatus, equipment, fixtures, fittings or services and cannot verify they are in working order or fit for their purposes. Nothing in these particulars is intended to indicate that carpets or curtains, furnishings or fittings, electrical goods (whether wired or not). Gas fires or light fittings or any other fixtures not expressly included form part of the property offered for sale. This computer generated Floorplan, if applicable, is intended as a general guide to the layout and design of the property. It is not to scale and should not be relied upon for dimensions. Tenure: We cannot confirm the tenure of the property as we have not had access to the legal documents. The buyer is advised to obtain verification from their solicitor or surveyor.

Peter Alan Limited is registered in England and Wales under company number 2073153, Registered Office is Cumbria House, 16-20 Hockliffe Street, Leighton Buzzard, Bedfordshire, LU7 1GN. VAT Registration Number is 500 2481 05. For activities relating to regulated mortgages and non-investment insurance contracts, Peter Alan Limited is an appointed representative of Connells Limited which is authorised and regulated by the Financial Conduct Authority. Connells Limited's Financial Services Register number is 302221. Most buy-to-let

