



St. Annes Crescent, £120,000

- Nearby Schools
- Local Amenities
- Local Park
- 3 Bedrooms
- Local Transport Links
- No chain
- Enclosed rear garden
- EPC Rating: D



 3  1  1



About the property

Presenting a well-appointed three-bedroom terraced house, This property is offered for sale and would make an excellent family home or an astute investment opportunity.

Upon entry, you are welcomed into a bright and spacious reception room, perfect for relaxing with family or entertaining guests. The thoughtful layout allows for a seamless flow throughout the ground floor, offering both comfort and practicality. Adjacent to the reception room, the property boasts a modern kitchen that is both spacious and practical, providing ample space for cooking and dining, making it the heart of the home.

The first floor comprises three well-proportioned bedrooms, ensuring comfortable accommodation for all members of the household. Each bedroom offers generous space, providing versatility for a family, guests, or a home office if desired. The property also features a family bathroom, designed with convenience in mind.

Located in Bargod, this terraced house presents an appealing opportunity for those seeking a well-located and adaptable home. The setting provides convenient access to local amenities, schools, and public transport, catering to a variety of lifestyles.



Accommodation

Agents Note

Entrance Hallway

Stairs To First Floor Landing

Lounge

18' 3" Max x 14' 1" Max (5.56m Max x 4.29m Max)

Kitchen

9' 8" x 9' 1" (2.95m x 2.77m)

Bathroom

Bedroom One

9' 1" Max x 11' 1" Max (2.77m Max x 3.38m Max)

Bedroom Two

8' 7" Max x 6' 8" Max (2.62m Max x 2.03m Max)

Bedroom Three

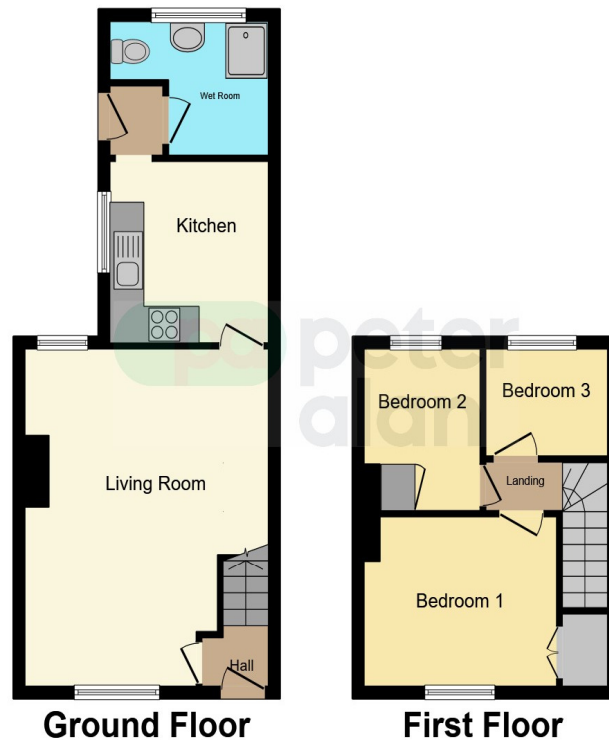
5' 9" x 7' 2" (1.75m x 2.18m)

Outside

01495 231199

blackwood@peteralan.co.uk

Floorplan



This floor plan is for illustrative purposes only. It is not drawn to scale. Any measurements, floor areas (including any total floor area), openings and orientation are approximate. No details are guaranteed, they cannot be relied upon for any purpose and they do not form part of any agreement. No liability is taken for any error, omission or misstatement. A party must rely upon its own inspection(s). Powered by www.focalagent.com



Important Information

Note while we endeavour to make our sales details accurate and reliable, if there is any point which is of particular interest to you, please contact the office and we will be pleased to confirm the position for you. We have not personally tested any apparatus, equipment, fixtures, fittings or services and cannot verify they are in working order or fit for their purposes. Nothing in these particulars is intended to indicate that carpets or curtains, furnishings or fittings, electrical goods (whether wired or not). Gas fires or light fittings or any other fixtures not expressly included form part of the property offered for sale. This computer generated Floorplan, if applicable, is intended as a general guide to the layout and design of the property. It is not to scale and should not be relied upon for dimensions. Tenure: We cannot confirm the tenure of the property as we have not had access to the legal documents. The buyer is advised to obtain verification from their solicitor or surveyor.

Peter Alan Limited is registered in England and Wales under company number 2073153, Registered Office is Cumbria House, 16-20 Hockliffe Street, Leighton Buzzard, Bedfordshire, LU7 1GN. VAT Registration Number is 500 2481 05. For activities relating to regulated mortgages and non-investment insurance contracts, Peter Alan Limited is an appointed representative of Connells Limited which is authorised and regulated by the Financial Conduct Authority. Connells Limited's Financial Services Register number is 302221. Most buy-to-let