



Waunborfa Road, £160,000

- No Chain
- Driveway
- Close to Reputable Schools
- Local Amenities
- Lounge/Dining Space
- Highly sought after location
- EPC Rating: Awaited



 3
  1
  1



About the property

Presenting this promising three-bedroom mid-terrace property, situated in a sought-after location renowned for its excellent public transport links and proximity to a variety of local amenities. This residence offers an exciting opportunity for buyers looking to modernise and personalise a home to their own taste and specifications.

Upon entering, you are greeted by a spacious reception room, thoughtfully designed to accommodate a comfortable living space alongside a dining area, perfect for relaxing with family or entertaining guests. The property further comprises a single well-proportioned kitchen, providing ample potential for an impressive contemporary upgrade.

Accommodation includes two generously sized double bedrooms that provide a peaceful retreat, along with a third single bedroom that would be ideal as a home office or nursery. The property also features a family bathroom.

Externally, this home benefits from the rare advantage of dedicated parking, ensuring both convenience and security for residents. The well-sized garden at the rear offers a tranquil outdoor setting ideal for al fresco



Accommodation

Entrance Hallway

Living/Dining Room

21' 5" Max x 12' 8" Max (6.53m Max x 3.86m Max)

Kitchen

8' 9" x 10' 2" (2.67m x 3.10m)

Downstairs W/C

Bedroom 1

11' 8" Max x 18' Max (3.56m Max x 5.49m Max)

Bedroom 2

9' 2" x 12' 5" Max (2.79m x 3.78m Max)

Bedroom 3

7' 9" x 9' 8" (2.36m x 2.95m)

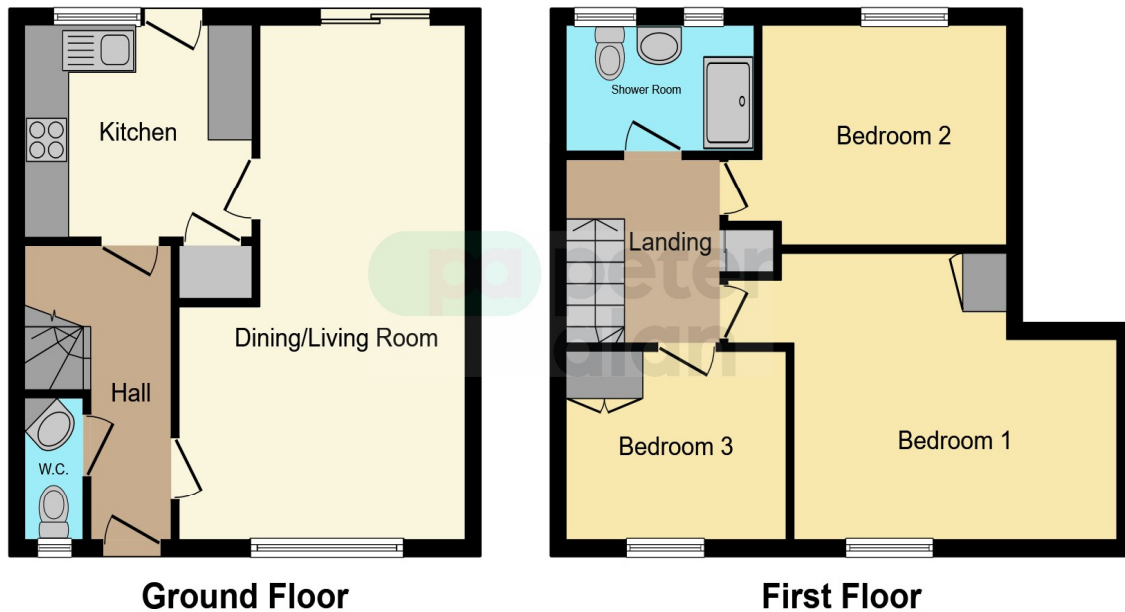
Shower Room

Garden

01495 231199

blackwood@peteralan.co.uk

Floorplan



This floor plan is for illustrative purposes only. It is not drawn to scale. Any measurements, floor areas (including any total floor area), openings and orientation are approximate. No details are guaranteed, they cannot be relied upon for any purpose and they do not form part of any agreement. No liability is taken for any error, omission or misstatement. A party must rely upon its own inspection(s). Powered by www.focalagent.com



Important Information

Note while we endeavour to make our sales details accurate and reliable, if there is any point which is of particular interest to you, please contact the office and we will be pleased to confirm the position for you. We have not personally tested any apparatus, equipment, fixtures, fittings or services and cannot verify they are in working order or fit for their purposes. Nothing in these particulars is intended to indicate that carpets or curtains, furnishings or fittings, electrical goods (whether wired or not). Gas fires or light fittings or any other fixtures not expressly included form part of the property offered for sale. This computer generated Floorplan, if applicable, is intended as a general guide to the layout and design of the property. It is not to scale and should not be relied upon for dimensions. Tenure: We cannot confirm the tenure of the property as we have not had access to the legal documents. The buyer is advised to obtain verification from their solicitor or surveyor.

Peter Alan Limited is registered in England and Wales under company number 2073153, Registered Office is Cumbria House, 16-20 Hockliffe Street, Leighton Buzzard, Bedfordshire, LU7 1GN. VAT Registration Number is 500 2481 05. For activities relating to regulated mortgages and non-investment insurance contracts, Peter Alan Limited is an appointed representative of Connells Limited which is authorised and regulated by the Financial Conduct Authority. Connells Limited's Financial Services Register number is 302221. Most buy-to-let